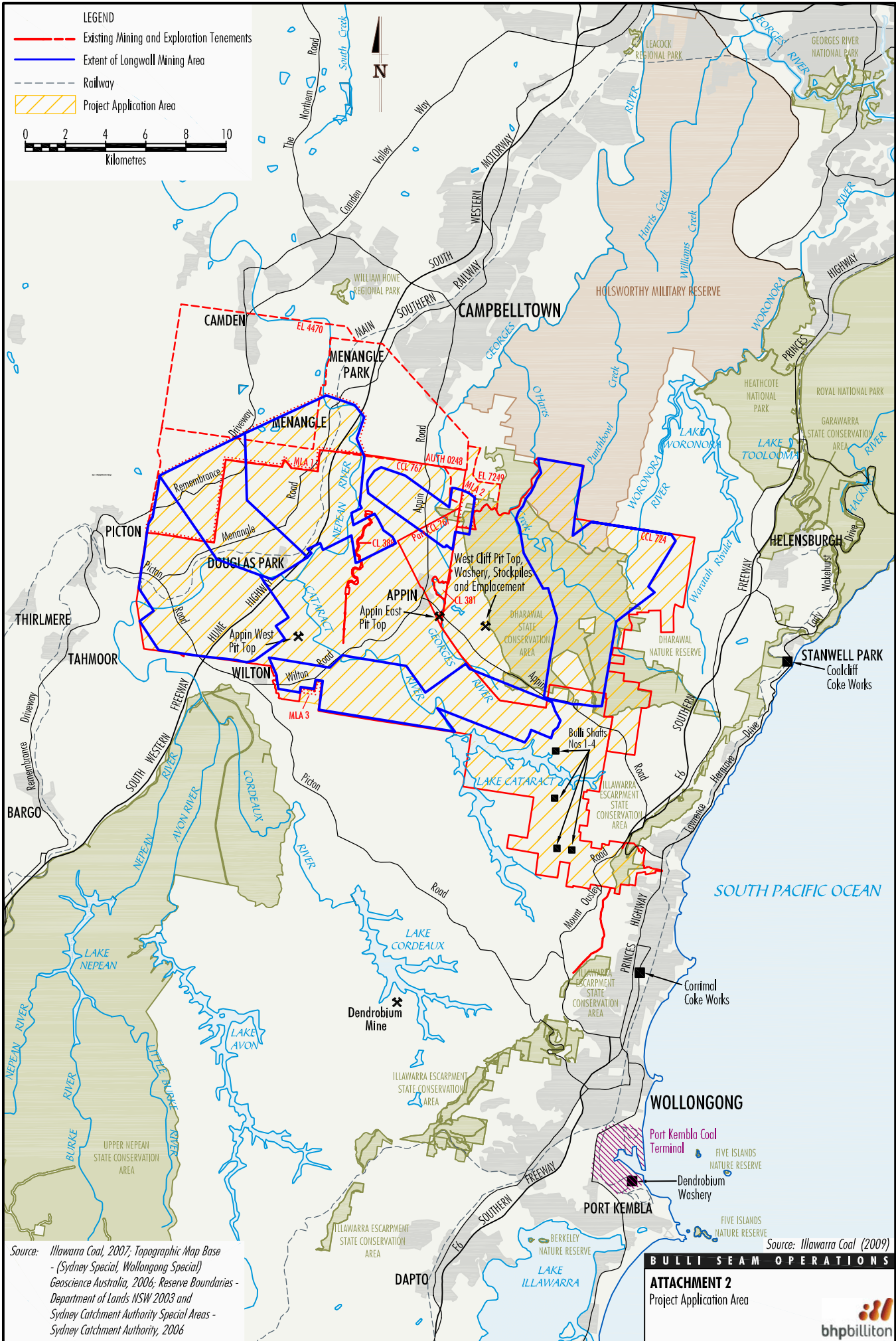




BULLI SEAM OPERATIONS

ATTACHMENT 2
PROJECT APPLICATION AREA AND
REAL PROPERTY DESCRIPTIONS



Source: Illawarra Coal, 2007; Topographic Map Base - (Sydney Special, Wollongong Special) Geoscience Australia, 2006; Reserve Boundaries - Department of Lands NSW 2003 and Sydney Catchment Authority Special Areas - Sydney Catchment Authority, 2006

Source: Illawarra Coal (2009)

BULLI SEAM OPERATIONS

ATTACHMENT 2
Project Application Area



CADID	Controlling Entity	Lot No.	Plan Label	Lot Class	Area (sq m)
101199482	2	229	DP816116	Standard Lot	20196.6
104461775	4	233	DP816116	Standard Lot	916.6
101199506	2	4	DP243548	Standard Lot	1333.3
101199895	2	11	DP803255	Standard Lot	23067.2
101199678	2	15	DP803255	Standard Lot	24270.2
101199693	2	19	DP803255	Standard Lot	20089.8
101199659	2	23	DP803255	Standard Lot	31193.1
101199689	2	27	DP803255	Standard Lot	19790.2
101199686	2	31	DP803255	Standard Lot	20848.0
101199488	2	228	DP816116	Standard Lot	20415.7
101199427	2	232	DP816116	Standard Lot	600.6
101199508	2	3	DP243548	Standard Lot	2153.6
101199673	2	2	DP651769	Standard Lot	3852.2
101199684	2	14	DP803255	Standard Lot	26678.1
101199692	2	18	DP803255	Standard Lot	20616.9
101199696	2	22	DP803255	Standard Lot	20128.1
101199699	2	26	DP803255	Standard Lot	21309.3
103794251	2	30	DP803255	Standard Lot	21182.0
101200080	2	101	DP635470	Standard Lot	38787.3
101200988	2	2	DP309188	Standard Lot	97423.4
101201144	2	4	DP625904	Standard Lot	11138.8
101285381	2	21	DP803193	Standard Lot	976.0
101285828	2	1	DP590044	Standard Lot	3920.4
101289070	2	22	DP736121	Standard Lot	29.2
101289368	2	104	DP228539	Standard Lot	742.1
101289286	2	108	DP228539	Standard Lot	656.2
101289731	2	36	DP10164	Standard Lot	726.0
101289768	2	43	DP10164	Standard Lot	940.1
101289797	2	50	DP10164	Standard Lot	657.6
101289831	2	58	DP10164	Standard Lot	703.5
101285382	2	22	DP803193	Standard Lot	1671.4
101285902	2	30	DP736923	Standard Lot	20027.4
101199646	2	1	DP511373	Standard Lot	78117.7
101199858	2	12	DP803255	Standard Lot	25580.6
101199690	2	16	DP803255	Standard Lot	25417.6
101199694	2	20	DP803255	Standard Lot	20031.7
101199697	2	24	DP803255	Standard Lot	23610.4
101199688	2	28	DP803255	Standard Lot	19792.2
101199940	2	32	DP803255	Standard Lot	20480.8
101201148	2	1	DP625904	Standard Lot	4534.4
101289732	2	37	DP10164	Standard Lot	652.4
101289765	2	40	DP10164	Standard Lot	710.3
101289769	2	44	DP10164	Standard Lot	839.8
101289771	2	48	DP10164	Standard Lot	863.4
101289798	2	51	DP10164	Standard Lot	657.6
101289832	2	59	DP10164	Standard Lot	658.6
104557225	2	230	DP816116	Standard Lot	44494.6
101199437	2	1	DP747563	Standard Lot	711.4
101200173	2	6	DP243548	Standard Lot	53.8
101285238	2	5	DP230526	Standard Lot	8103.3
101285638	2	3	DP548840	Standard Part Lot	4803.2
101285863	2	31	DP736923	Standard Lot	17094.7
101289370	2	102	DP228539	Standard Lot	796.8
101289284	2	122	DP228539	Standard Lot	19059.0
101289734	2	38	DP10164	Standard Lot	644.2

CADID	Controlling Entity	Lot No.	Plan Label	Lot Class	Area (sq m)
101289766	2	41	DP10164	Standard Lot	791.8
101289770	2	45	DP10164	Standard Lot	900.2
101289807	2	49	DP10164	Standard Lot	708.1
101289799	2	52	DP10164	Standard Lot	618.6
101289802	2	56	DP10164	Standard Lot	688.8
104557232	2	231	DP816116	Standard Lot	62205.2
101199647	2	4	DP511373	Standard Lot	59310.9
101199902	2	13	DP803255	Standard Lot	23347.7
101199691	2	17	DP803255	Standard Lot	24621.4
101199695	2	21	DP803255	Standard Lot	20168.4
101199698	2	25	DP803255	Standard Lot	23733.6
101199687	2	29	DP803255	Standard Lot	20181.9
101200002	2	100	DP635470	Standard Lot	413134.6
101200990	2	1	DP309188	Standard Lot	88709.4
101201147	2	2	DP625904	Standard Lot	15506.3
101201225	2	1	DP105348	Standard Part Lot	10058.7
101285306	2	20	DP803193	Standard Lot	1254.5
101285206	2	32	DP736923	Standard Lot	616317.8
101289029	2	1	DP430752	Standard Lot	7963.5
101289369	2	103	DP228539	Standard Lot	745.8
101289354	2	107	DP228539	Standard Lot	641.2
101289736	2	39	DP10164	Standard Lot	650.3
101289767	2	42	DP10164	Standard Lot	751.8
101289830	2	57	DP10164	Standard Lot	688.9
101200896	2	391	DP800151	Standard Lot	24432.4
104630331	2	811	DP876798	Standard Lot	61979.6
104241635	2	82	DP1012784	Standard Lot	47655.7
104474812	2	22	DP1007021	Standard Lot	56402.9
103713822	2	A	DP340554	Standard Lot	1164.9
103917241	2	812	DP876798	Standard Lot	20044.7
101200781	2	2	DP572039	Standard Lot	27468.7
101201215	2	102	DP794081	Standard Lot	20382.1
104630414	2	106	DP794081	Standard Lot	426321.1
101285478	2	24	DP595758	Standard Lot	1025.5
101292590	2	A	DP109836	Standard Part Lot	15563.1
104241632	2	83	DP1012784	Standard Lot	55404.9
104148144	2	D	DP377759	Standard Lot	330942.9
101200061	2	1	DP306367	Standard Lot	6565.0
101200967	2	541	DP559948	Standard Lot	101479.0
101201204	2	103	DP794081	Standard Lot	162629.3
101285465	2	1	DP782250	Standard Lot	7326.8
101285558	2	71	DP811711	Standard Lot	1189.3
101292592	2	B	DP109836	Standard Part Lot	3885.8
101199982	2	1	DP833150	Standard Lot	3804.8
101199980	2	2	DP833150	Standard Lot	1225.2
101220846	2	1	DP775452	Standard Lot	250.8
101284220	2	1	DP34466	Standard Lot	1091.8
103713821	2	B	DP340554	Standard Lot	1139.8
101200067	2	1	DP391711	Standard Lot	1041.2
101285552	2	2	DP616983	Standard Lot	1006.3
104661695	2	1	DP602888	Standard Lot	699012.6
104241631	2	84	DP1012784	Standard Lot	47890.4
104687011	2	411	DP1044196	Standard Lot	61862.6
101200982	2	542	DP559948	Standard Lot	101381.8
101201156	2	104	DP794081	Standard Lot	228629.7

CADID	Controlling Entity	Lot No.	Plan Label	Lot Class	Area (sq m)
101283973	2	81	DP622780	Standard Lot	20216.5
101285479	2	22	DP595758	Standard Lot	1313.1
101285559	2	72	DP811711	Standard Lot	2815.4
101199745	2	4	DP231728	Standard Part Lot	103763.1
101200044	2	2	DP242606	Standard Lot	103707.9
101200737	2	1	DP564375	Standard Lot	101787.9
101200793	2	10	DP5152	Standard Lot	4020.0
101200775	2	14	DP5152	Standard Lot	3975.3
101200776	2	18	DP5152	Standard Lot	49757.5
101200837	2	25A	DP5152	Standard Lot	20237.3
101200835	2	27A	DP5152	Standard Lot	27849.0
101200761	2	33	DP5152	Standard Lot	33583.2
101200488	2	56	DP5152	Standard Lot	366270.7
101200799	2	1	DP21415	Standard Lot	4006.0
101200802	2	4	DP21415	Standard Lot	4136.7
101200805	2	8	DP21415	Standard Lot	4108.0
101201065	2	5	DP651434	Standard Lot	736.5
101284207	2	2	DP248740	Standard Lot	25960.0
101284184	2	6	DP248740	Standard Lot	109729.5
101285640	2	11	DP23717	Standard Lot	1694.2
101285636	2	15	DP23717	Standard Lot	1559.1
101285686	2	19	DP23717	Standard Lot	1549.4
101285646	2	8	DP23717	Standard Lot	1762.1
101285840	2	2	DP598826	Standard Lot	5011.3
101285757	2	13	DP826431	Standard Lot	1349.8
101285929	2	8	DP826431	Standard Lot	976.0
101285938	2	14	DP839258	Standard Lot	2433.2
101288911	2	3	DP209169	Standard Lot	122550.1
104241634	2	81	DP1012784	Standard Lot	37487.9
104241630	2	85	DP1012784	Standard Lot	43749.0
104474813	2	21	DP1007021	Standard Lot	43504.6
104475492	2	6	DP557763	Standard Lot	111094.2
101220844	2	2	DP775452	Standard Lot	1176.9
104516267	2	412	DP1044196	Standard Lot	21153.6
101199464	2	212	DP747511	Standard Lot	82956.8
101199661	2	200	DP746432	Standard Lot	454784.1
101200043	2	1	DP242606	Standard Lot	172314.5
101200068	2	5	DP242606	Standard Lot	102047.7
101200944	2	52	DP5152	Standard Part Lot	147782.3
101200790	2	13	DP5152	Standard Lot	4116.3
101200798	2	17	DP5152	Standard Lot	4053.6
101200769	2	25	DP5152	Standard Lot	29736.6
101200768	2	27	DP5152	Standard Lot	46451.5
101200760	2	32	DP5152	Standard Lot	34434.9
101200794	2	9	DP5152	Standard Lot	4072.6
101200801	2	3	DP21415	Standard Lot	3992.3
101200806	2	7	DP21415	Standard Lot	4066.7
101200931	2	B	DP369011	Standard Lot	250751.2
101284206	2	1	DP248740	Standard Lot	21070.7
101284203	2	5	DP248740	Standard Lot	104212.3
101284209	2	9	DP248740	Standard Lot	100333.9
101285644	2	10	DP23717	Standard Lot	1495.6
101285637	2	14	DP23717	Standard Lot	1619.3
101285683	2	18	DP23717	Standard Lot	1572.5
101285736	2	7	DP23717	Standard Lot	12628.0

CADID	Controlling Entity	Lot No.	Plan Label	Lot Class	Area (sq m)
101285709	2	2	DP601443	Standard Lot	3964.2
101285844	2	1	DP598826	Standard Lot	5252.1
101285931	2	12	DP826431	Standard Lot	1110.5
101285928	2	7	DP826431	Standard Lot	975.4
101285937	2	13	DP839258	Standard Lot	2399.4
101288913	2	2	DP209169	Standard Lot	19850.2
104624002	2	131	DP1052106	Standard Lot	1321.9
101200756	2	1	DP572039	Standard Lot	77795.9
101201203	2	101	DP794081	Standard Lot	20567.0
101201142	2	105	DP794081	Standard Lot	170051.5
101283952	2	82	DP622780	Standard Lot	60781.0
101285572	2	23	DP595758	Standard Lot	1069.5
102321939	2	4	DP602888	Standard Lot	22264.9
104444277	2	1	DP306717	Standard Lot	40601.2
104249707	2	190	DP1014839	Standard Lot	3786.7
104475496	2	3	DP825014	Standard Lot	302290.0
104624003	2	132	DP1052106	Standard Lot	1684.6
101285619	2	1	DP616983	Standard Lot	1022.4
101289065	2	1	DP997616	Standard Lot	2823.7
101199641	2	1	DP720730	Standard Lot	792.9
101199459	2	3	DP1022646	Standard Lot	22360.1
101200052	2	7	DP242606	Standard Lot	102604.2
101200792	2	11	DP5152	Standard Lot	4027.9
101200831	2	23	DP5152	Standard Lot	35526.3
101200770	2	26	DP5152	Standard Lot	30713.2
101200765	2	28	DP5152	Standard Lot	52198.8
101200866	2	34	DP5152	Standard Lot	35791.0
101200411	2	57	DP5152	Standard Lot	524918.1
101200774	2	10	DP21415	Standard Lot	3865.2
101200803	2	5	DP21415	Standard Lot	4080.9
101200804	2	9	DP21415	Standard Lot	4022.2
101284208	2	3	DP248740	Standard Lot	39012.9
104475479	2	7	DP248740	Standard Lot	102530.8
101285639	2	12	DP23717	Standard Lot	1513.7
101285681	2	16	DP23717	Standard Lot	1578.0
103713827	2	20	DP23717	Standard Lot	16146.8
101285645	2	9	DP23717	Standard Lot	1501.1
101285833	2	220	DP837141	Standard Lot	1110.8
101285934	2	10	DP826431	Standard Lot	1679.9
101285926	2	5	DP826431	Standard Lot	975.8
101285930	2	9	DP826431	Standard Lot	1186.4
101285251	2	9	DP839258	Standard Lot	30120.9
104133095	2	2	DP735169	Standard Lot	19911.8
101285196	2	4	DP825014	Standard Lot	132263.0
101201002	2	4	DP597781	Standard Lot	11406.3
104630411	2	3311	DP1054394	Standard Lot	178355.8
101199463	2	211	DP747511	Standard Lot	20797.3
101199746	2	3	DP231728	Standard Lot	103233.2
101200053	2	4	DP242606	Standard Lot	101498.2
101200279	2	31	DP731012	Standard Lot	27949.2
101200791	2	12	DP5152	Standard Lot	4073.9
101200853	2	24	DP5152	Standard Lot	31123.8
101200836	2	26A	DP5152	Standard Lot	20278.7
101200763	2	29	DP5152	Standard Lot	42404.2
101200864	2	37A	DP5152	Standard Lot	48230.6

CADID	Controlling Entity	Lot No.	Plan Label	Lot Class	Area (sq m)
101200487	2	58	DP5152	Standard Lot	312891.4
101200800	2	2	DP21415	Standard Lot	4081.0
101200807	2	6	DP21415	Standard Lot	3970.2
104289617	2	A	DP369011	Standard Lot	205968.1
101288898	2	1	DP209169	Standard Lot	19291.8
101284204	2	4	DP248740	Standard Lot	112100.0
101284187	2	8	DP248740	Standard Lot	100593.0
101285455	2	56	DP775457	Standard Lot	1701.6
101285641	2	13	DP23717	Standard Lot	1556.7
101285682	2	17	DP23717	Standard Lot	1527.8
101285687	2	21	DP23717	Standard Lot	4493.9
101285740	2	1	DP601443	Standard Lot	9626.0
101285832	2	221	DP837141	Standard Lot	14388.6
101285932	2	11	DP826431	Standard Lot	1641.6
101285927	2	6	DP826431	Standard Lot	975.5
101285936	2	10	DP839258	Standard Lot	4284.6
101199489	2	2	DP594242	Standard Lot	1430688.1
101199768	2	3	DP838568	Standard Lot	101918.5
101283901	3	7001	DP1055415	Standard Lot	2795.7
101284190	2	1	DP532179	Standard Lot	48746.7
101285846	2	1	DP80983	Standard Part Lo	19427.7
104661691	2	24	DP700072	Standard Lot	403816.9
101199719	2	1	DP861800	Standard Lot	361880.7
103824265	2	1	DP338801	Standard Lot	4570.1
101200795	2	7	DP819903	Standard Lot	33.6
101284197	2	1	DP629723	Standard Lot	8680.2
101285841	2	1	DP595675	Standard Lot	138922.1
103925563	2	1	DP877582	Standard Lot	6705.6
104595022	2	1	DP817662	Standard Lot	20275.7
101200947	2	2	DP657312	Standard Lot	16956.0
101220851	2	1	DP534540	Standard Lot	11894.5
101284050	2	1	DP176528	Standard Lot	65896.9
104133103	2	1	DP735169	Standard Lot	19698.5
103841318	2	241	DP869402	Standard Lot	71015.7
103884817	2	1	DP873192	Standard Lot	80797.0
104251176	2	42	DP1015000	Standard Lot	936.4
104630418	2	3310	DP1054394	Standard Lot	442458.1
104631026	3	7002	DP1055352	Standard Lot	9667.4
101199720	2	1	DP121322	Standard Lot	835315.8
101199786	2	4	DP838568	Standard Lot	102462.2
101285240	2	1	DP112177	Standard Lot	25997.3
101288879	2	B	DP395351	Standard Lot	72571.6
101199769	2	2	DP838568	Standard Lot	100274.4
101283889	2	1	DP215646	Standard Lot	19678.5
101284052	2	102	DP771795	Standard Lot	40566.9
104661701	2	21	DP700072	Standard Lot	690141.5
102321937	2	23	DP700072	Standard Lot	46700.5
104687015	2	112	DP1062542	Standard Lot	85249.6
104218495	5	5	DP819903	Standard Lot	10053.8
101285831	2	2	DP595675	Standard Lot	24798.8
101200130	2	1	DP306368	Standard Lot	437.2
101284193	2	2	DP629723	Standard Lot	11240.9
104173020	2	32	DP833584	Standard Lot	363596.5
101199748	2	3	DP249218	Standard Lot	90814.8
101199752	2	19	DP4450	Standard Lot	564717.7

CADID	Controlling Entity	Lot No.	Plan Label	Lot Class	Area (sq m)
101199507	2	11	DP252724	Standard Lot	221179.3
101200031	2	21	DP252724	Standard Lot	101424.7
101200039	2	6	DP252724	Standard Lot	20241.1
104687008	2	2	DP230170	Standard Lot	101432.8
101200127	2	12	DP829190	Standard Lot	1018.6
101200142	2	16	DP829190	Standard Lot	976.1
101200174	2	2	DP829190	Standard Lot	982.6
101200176	2	6	DP829190	Standard Lot	992.1
101200103	2	1	DP587187	Standard Lot	643.4
101200113	2	3	DP205612	Standard Lot	845.6
104557235	2	41	DP1047062	Standard Lot	20016.8
101200963	2	B	DP435855	Standard Lot	99753.8
101284211	2	4	DP595956	Standard Lot	6268.0
101285512	2	10	DP804767	Standard Lot	1039.3
101285516	2	14	DP804767	Standard Lot	1160.4
101285496	2	18	DP804767	Standard Lot	1027.8
101285498	2	5	DP804767	Standard Lot	1008.9
101285511	2	9	DP804767	Standard Lot	1015.7
101285625	2	29	DP243256	Standard Lot	2028.0
101285372	2	1	DP711665	Standard Lot	1384.4
103841319	2	242	DP869402	Standard Lot	30036.0
103884818	2	2	DP873192	Standard Lot	20243.5
104244300	2	4	DP1013814	Standard Lot	60571.5
104251190	2	41	DP1015000	Standard Lot	945.3
104631027	3	7001	DP1055352	Standard Lot	65177.2
101199771	2	1	DP838568	Standard Lot	100492.3
101284053	2	101	DP771795	Standard Lot	67309.1
104375769	2	2	DP112177	Standard Lot	28103.0
101199721	2	7	DP249218	Standard Lot	60439.8
101200073	2	20A	DP4450	Standard Lot	252537.6
101200016	2	17	DP252724	Standard Lot	104741.3
104474814	2	3	DP252724	Standard Lot	20513.3
101200038	2	8	DP252724	Standard Lot	101561.1
101200093	2	1	DP829190	Standard Lot	985.7
101200128	2	13	DP829190	Standard Lot	979.3
101200178	2	17	DP829190	Standard Lot	976.7
101200180	2	3	DP829190	Standard Lot	977.4
101200177	2	7	DP829190	Standard Lot	1006.3
101200104	2	2	DP587187	Standard Lot	640.6
101200114	2	4	DP205612	Standard Lot	845.7
104215951	2	391	DP624968	Standard Lot	125340.5
102321938	2	22	DP700072	Standard Lot	44498.8
101284032	2	11	DP805999	Standard Lot	20251.6
101285592	2	11	DP804767	Standard Lot	1040.2
101285514	2	15	DP804767	Standard Lot	1160.3
101285484	2	2	DP804767	Standard Lot	974.2
101285499	2	6	DP804767	Standard Lot	1014.9
101285632	2	26	DP243256	Standard Lot	1997.9
101285626	2	30	DP243256	Standard Lot	1985.8
101199478	2	31	DP833584	Standard Lot	29594.3
101199742	2	13	DP249218	Standard Lot	161152.2
101200091	2	15A	DP4450	Standard Lot	322686.3
101199509	2	10	DP252724	Standard Lot	101189.2
101200030	2	20	DP252724	Standard Lot	20102.0
101200034	2	5	DP252724	Standard Lot	20873.1

CADID	Controlling Entity	Lot No.	Plan Label	Lot Class	Area (sq m)
101200076	2	1	DP230170	Standard Lot	102139.5
101200126	2	11	DP829190	Standard Lot	1150.6
101200141	2	15	DP829190	Standard Lot	1135.7
101200135	2	19	DP829190	Standard Lot	975.8
101200175	2	5	DP829190	Standard Lot	1881.4
101200183	2	9	DP829190	Standard Lot	1115.3
101200116	2	2	DP205612	Standard Lot	902.7
103681345	2	61	DP850925	Standard Lot	24434.5
104173017	2	31	DP1008503	Standard Lot	26707.4
104312703	2	11	DP1021168	Standard Lot	76312.9
101289201	2	20	DP222519	Standard Lot	1885.9
101284043	2	2	DP335418	Standard Lot	62960.9
101285483	2	1	DP804767	Standard Lot	974.5
101285517	2	13	DP804767	Standard Lot	1150.4
101285505	2	17	DP804767	Standard Lot	975.1
101285486	2	4	DP804767	Standard Lot	975.0
101285501	2	8	DP804767	Standard Lot	1014.9
101285634	2	28	DP243256	Standard Lot	2095.9
104399253	2	1	DP239302	Standard Lot	20638.5
104399256	2	3	DP239302	Standard Lot	20455.2
104687013	2	111	DP1062542	Standard Lot	24362.7
101200151	2	1	DP370921	Standard Lot	149994.3
101199445	2	1	DP736412	Standard Lot	285004.9
104630805	2	10	DP251063	Standard Lot	102093.4
101199632	2	16	DP251063	Standard Lot	20209.9
101200764	2	3	DP567304	Standard Lot	42791.6
101201150	2	31	DP826690	Standard Lot	47042.1
101284214	2	2	DP629724	Standard Lot	5619.3
104557233	2	42	DP1047062	Standard Lot	81177.4
101284202	2	1	DP612427	Standard Lot	35891.2
104244296	2	3	DP1013814	Standard Lot	50869.2
101200070	2	A	DP365733	Standard Lot	1380.4
101200983	2	1	DP807994	Standard Lot	20027.7
104244295	2	1	DP1013814	Standard Lot	24985.9
101199929	2	31	DP582770	Standard Lot	1237.7
104225659	2	1	DP915066	Standard Lot	8036.6
104283304	2	22	DP708515	Standard Lot	20238.4
101199732	2	9	DP249218	Standard Lot	84924.6
101199622	2	8A	DP4450	Standard Lot	46763.5
101200027	2	14	DP252724	Standard Lot	100401.9
101200035	2	4	DP252724	Standard Lot	20231.2
101200033	2	9	DP252724	Standard Lot	101366.4
101200184	2	10	DP829190	Standard Lot	988.0
101200133	2	14	DP829190	Standard Lot	1182.9
101200179	2	18	DP829190	Standard Lot	977.8
101200181	2	4	DP829190	Standard Lot	1246.6
101200182	2	8	DP829190	Standard Lot	1059.3
101200117	2	1	DP205612	Standard Lot	598.8
104463680	2	392	DP624968	Standard Lot	101548.2
101200949	2	5	DP30307	Standard Lot	8788.6
101200981	2	1	DP745611	Standard Lot	24160.2
101201040	2	1	DP604283	Standard Lot	19732.5
101199614	2	5	DP112301	Standard Lot	24.9
101199715	2	6	DP246706	Standard Lot	97214.5
101199707	2	10	DP635151	Standard Lot	3261.8

CADID	Controlling Entity	Lot No.	Plan Label	Lot Class	Area (sq m)
101199743	2	6	DP248225	Standard Lot	118787.7
101200227	2	11	DP838297	Standard Lot	1451.6
101200201	2	15	DP838297	Standard Lot	1213.9
101200125	2	19	DP838297	Standard Lot	1474.2
101200212	2	22	DP838297	Standard Lot	1320.6
101200219	2	26	DP838297	Standard Lot	2468.1
101200204	2	3	DP838297	Standard Lot	1263.0
101200194	2	33	DP838297	Standard Lot	2086.7
101200060	2	37	DP838297	Standard Lot	17025.2
101200226	2	6	DP838297	Standard Lot	1290.5
101200101	2	A	DP322713	Standard Lot	321.0
101200137	2	10	DP251588	Standard Lot	692.7
101200059	2	15	DP251588	Standard Lot	976.6
101200124	2	4	DP251588	Standard Lot	694.9
101200134	2	8	DP251588	Standard Lot	603.6
101200854	2	1	DP205275	Standard Lot	7686.5
101200857	2	4	DP205275	Standard Lot	9244.4
101200861	2	8	DP205275	Standard Lot	9549.2
101283907	9	12	DP752066	Standard Lot	197842.3
101283976	3	45	DP752066	Standard Lot	49607.1
101285821	2	2	DP209113	Standard Lot	27554.1
101285217	2	6	DP209113	Standard Lot	28615.7
101285208	2	2	DP808057	Standard Lot	388008.5
101285713	2	2	DP599222	Standard Lot	8883.2
101283861	2	11	DP744101	Standard Lot	340349.4
101283879	2	1	DP263790	Standard Lot	77.1
101284023	2	12	DP805999	Standard Lot	115769.1
101285595	2	12	DP804767	Standard Lot	1171.3
101285508	2	16	DP804767	Standard Lot	987.4
101285485	2	3	DP804767	Standard Lot	974.7
101285500	2	7	DP804767	Standard Lot	1015.0
101285633	2	27	DP243256	Standard Lot	2022.3
103681344	2	60	DP850925	Standard Lot	548453.4
103752063	2	1	DP387654	Standard Lot	635.9
104173018	2	34	DP1008503	Standard Lot	56820.2
104399254	2	2	DP239302	Standard Lot	20238.9
104399251	2	6	DP239302	Standard Lot	163193.1
103865878	2	171	DP871327	Standard Lot	1101.5
101284213	2	1	DP629724	Standard Lot	14756.1
101199612	2	1	DP533700	Standard Lot	753.9
101199718	2	13	DP251063	Standard Lot	118384.8
101199733	2	12	DP775437	Standard Lot	21004.7
101200762	2	2	DP567304	Standard Lot	27955.3
101201160	2	30	DP826690	Standard Lot	41398.1
104173016	2	32	DP1008503	Standard Lot	44185.6
104244297	2	2	DP1013814	Standard Lot	25000.0
104461772	2	11	DP239302	Standard Lot	101895.0
104399257	2	4	DP239302	Standard Lot	20243.1
104475475	2	101	DP790844	Standard Lot	23267.0
101199607	2	41	DP777560	Standard Lot	22979.0
101199639	2	11	DP251063	Standard Lot	101310.5
101199633	2	17	DP251063	Standard Lot	36131.2
101200009	2	82	DP588337	Standard Lot	469877.8
101200110	2	B	DP398310	Standard Lot	696.6
101200787	2	1	DP572548	Standard Lot	119514.0

CADID	Controlling Entity	Lot No.	Plan Label	Lot Class	Area (sq m)
101289074	2	2	DP541868	Standard Lot	52378.5
104516255	2	40	DP717358	Standard Lot	20140.4
104595023	2	1	DP1046986	Standard Lot	23311.3
104687012	4	30	DP1012966	Standard Lot	80017.0
101199819	2	1	DP780739	Standard Lot	17680.4
101200071	2	B	DP365733	Standard Lot	2295.8
101200291	2	202	DP621568	Standard Lot	159310.1
102032759	2	2	DP807994	Standard Lot	118857.1
104287421	2	20	DP615867	Standard Lot	1214.2
101200131	2	8	DP531899	Standard Lot	1308.1
101284100	2	100	DP804830	Standard Lot	40515.3
104384638	3	7014	DP1030829	Standard Lot	148027.5
101199933	2	28	DP582770	Standard Lot	1598.2
101200351	2	22	DP584470	Standard Lot	77048.8
101284108	2	1	DP629075	Standard Lot	87677.6
104756226	2	411	DP881875	Standard Lot	1259.1
103865879	2	172	DP871327	Standard Lot	920.6
104173015	2	33	DP1008503	Standard Lot	57178.0
104399249	2	12	DP239302	Standard Lot	160834.7
104399258	2	5	DP239302	Standard Lot	20022.7
104541992	2	102	DP1044864	Standard Lot	20508.7
104630806	2	1091	DP1054357	Standard Lot	59526.4
101284180	2	9	DP563605	Standard Lot	57901.7
104225764	2	42	DP777560	Standard Lot	19573.4
101199640	2	12	DP251063	Standard Lot	99543.5
101199734	2	11	DP775437	Standard Lot	22947.0
101200766	2	1	DP567304	Standard Lot	13130.4
101283882	2	1	DP383084	Standard Lot	122364.6
101283985	2	1	DP432629	Standard Lot	62583.1
101284020	2	B	DP419022	Standard Lot	40405.7
101285554	2	3	DP540843	Standard Lot	1033.2
101285650	2	1	DP205516	Standard Lot	749.6
101285738	2	62	DP714960	Standard Lot	967.8
101285860	2	1	DP508002	Standard Lot	32632.2
101200980	2	510	DP773816	Standard Lot	19517.0
104475498	2	100	DP790844	Standard Lot	179498.1
104516265	4	31	DP1012966	Standard Lot	20856.1
104595021	2	2	DP1046986	Standard Lot	6941.6
101200013	2	81	DP588337	Standard Lot	97447.8
101200111	2	A	DP398310	Standard Lot	696.5
101200741	2	22	DP576601	Standard Lot	100606.9
101201107	2	1	DP247610	Standard Lot	5614.8
103713819	2	2	DP21608	Standard Lot	1397.9
103960454	2	1	DP881528	Standard Lot	19769.0
101199897	2	6	DP660397	Standard Lot	4857.6
101201157	2	21	DP584470	Standard Lot	75502.4
101285706	2	1	DP503708	Standard Lot	2278.2
101199900	2	3	DP660394	Standard Lot	4069.0
101283986	2	10	DP806350	Standard Lot	103245.5
104065098	2	11	DP1000921	Standard Lot	59912.4
104542004	2	30	DP712872	Standard Lot	80446.8
101199766	2	9	DP246706	Standard Lot	35743.4
101200172	2	10	DP248225	Standard Lot	21175.2
101199763	2	5	DP248225	Standard Lot	20046.0
101200223	2	10	DP838297	Standard Lot	1626.2

CADID	Controlling Entity	Lot No.	Plan Label	Lot Class	Area (sq m)
101200206	2	14	DP838297	Standard Lot	1238.3
101200209	2	18	DP838297	Standard Lot	1238.4
101200062	2	21	DP838297	Standard Lot	1524.4
101200217	2	25	DP838297	Standard Lot	1779.5
101200200	2	29	DP838297	Standard Lot	2635.9
101200191	2	36	DP838297	Standard Lot	1388.3
101200222	2	5	DP838297	Standard Lot	1228.6
101200224	2	9	DP838297	Standard Lot	1713.1
101200118	2	1	DP251588	Standard Lot	845.4
101200057	2	14	DP251588	Standard Lot	977.0
101200120	2	3	DP251588	Standard Lot	1275.6
101200132	2	7	DP251588	Standard Lot	753.4
101200906	2	5	DP957689	Standard Lot	18407.6
101200856	2	3	DP205275	Standard Lot	8559.5
101200860	2	7	DP205275	Standard Lot	9238.8
101200950	2	4	DP30307	Standard Lot	10700.9
101200902	2	9	DP30307	Standard Lot	60760.6
101200444	2	3	DP573736	Standard Lot	203366.1
101201041	2	231	DP619005	Standard Lot	8393.0
101200188	2	30	DP838297	Standard Lot	2969.5
101200193	2	34	DP838297	Standard Lot	1389.3
101200063	2	38	DP838297	Standard Lot	2252.4
101200228	2	7	DP838297	Standard Lot	1476.9
101200100	2	B	DP322713	Standard Lot	962.9
101200138	2	11	DP251588	Standard Lot	688.3
101200153	2	16	DP251588	Standard Lot	976.6
101200123	2	5	DP251588	Standard Lot	701.7
101200136	2	9	DP251588	Standard Lot	599.2
101200863	2	10	DP205275	Standard Lot	9272.7
101200858	2	5	DP205275	Standard Lot	8457.2
101200862	2	9	DP205275	Standard Lot	9388.8
101200948	2	7	DP30307	Standard Lot	20901.0
101201008	2	1	DP573736	Standard Lot	9989.5
101201037	2	2	DP604283	Standard Lot	81193.3
101199581	2	9	DP112301	Standard Lot	8078.8
101199714	2	7	DP246706	Standard Lot	4385.8
101199756	2	11	DP635151	Standard Lot	13965.9
101200170	2	8	DP248225	Standard Lot	20754.7
101200221	2	12	DP838297	Standard Lot	1252.2
101200190	2	16	DP838297	Standard Lot	1179.3
101200202	2	2	DP838297	Standard Lot	1265.2
101200218	2	23	DP838297	Standard Lot	1385.1
101200198	2	27	DP838297	Standard Lot	2941.9
101283923	3	13	DP752066	Standard Lot	205652.0
101283906	9	46	DP752066	Standard Lot	207110.6
101285876	2	57	DP752066	Standard Lot	120748.4
101283974	3	61	DP752066	Standard Lot	55661.7
104697415	3	10	DP752066	Standard Lot	148976.3
101283910	2	23	DP752066	Standard Lot	265247.4
101283995	2	59	DP752066	Standard Lot	63508.7
101283880	2	2	DP263790	Standard Lot	12290.8
101284189	2	4	DP629715	Standard Lot	20998.1
101285214	2	3	DP209113	Standard Lot	27633.5
104475476	2	7	DP209113	Standard Lot	206423.2
101285246	2	1	DP584515	Standard Lot	17380.2

CADID	Controlling Entity	Lot No.	Plan Label	Lot Class	Area (sq m)
101283892	2	2	DP632721	Standard Lot	42159.5
101283896	2	6	DP263790	Standard Lot	29904.5
104475490	2	1	DP209113	Standard Lot	46931.6
101285216	2	5	DP209113	Standard Lot	24975.5
101285226	2	1	DP808057	Standard Lot	24181.5
101285741	2	1	DP599222	Standard Lot	25832.1
101638713	2	101	DP846886	Standard Lot	20008.5
101200159	2	9	DP248225	Standard Lot	104139.7
101200189	2	1	DP838297	Standard Lot	1635.1
101200220	2	13	DP838297	Standard Lot	1250.6
101200119	2	17	DP838297	Standard Lot	1240.4
101200197	2	20	DP838297	Standard Lot	1506.0
101200214	2	24	DP838297	Standard Lot	1967.8
101200199	2	28	DP838297	Standard Lot	2583.3
101200196	2	31	DP838297	Standard Lot	4134.6
101200192	2	35	DP838297	Standard Lot	1356.1
101200205	2	4	DP838297	Standard Lot	1253.6
101200229	2	8	DP838297	Standard Lot	1836.8
101200108	2	1	DP342405	Standard Lot	696.7
101200139	2	12	DP251588	Standard Lot	692.1
101200121	2	2	DP251588	Standard Lot	871.2
101200122	2	6	DP251588	Standard Lot	706.3
101200955	2	4	DP957689	Standard Lot	2324.8
101200855	2	2	DP205275	Standard Lot	7814.9
101200859	2	6	DP205275	Standard Lot	8878.0
101200987	2	3	DP30307	Standard Lot	12364.3
101200904	2	8	DP30307	Standard Lot	31881.1
101201014	2	2	DP573736	Standard Lot	9880.2
104241629	2	2	DP246706	Standard Lot	100063.5
101199737	2	8	DP246706	Standard Lot	6002.0
101200171	2	1	DP248225	Standard Lot	21151.5
101199765	2	4	DP248225	Standard Lot	20122.5
101283984	9	15	DP752066	Standard Lot	208407.9
101283983	9	47	DP752066	Standard Lot	231598.4
101284000	3	58	DP752066	Standard Lot	63855.3
101283949	9	63	DP752066	Standard Lot	61750.8
104609551	2	1	DP744101	Standard Lot	318883.6
101283878	2	1	DP632721	Standard Lot	19567.0
101283897	2	3	DP263790	Standard Lot	27870.3
101285215	2	4	DP209113	Standard Lot	26201.7
101285218	2	8	DP209113	Standard Lot	102704.4
101285247	2	2	DP584515	Standard Lot	3025.2
101199602	2	1	DP576297	Standard Lot	1547.4
101199491	2	10	DP623659	Standard Lot	141426.9
101199762	2	1	DP804133	Standard Lot	23677.3
101199984	2	5	DP804133	Standard Lot	26268.8
101199770	2	19	DP8738	Standard Part Lo	166219.9
101199792	2	37	DP8738	Standard Lot	149988.7
101199898	2	5	DP660396	Standard Lot	2014.4
101200315	2	2	DP233845	Standard Lot	161551.0
101200879	2	A	DP158770	Standard Lot	3648.2
101638711	2	102	DP846886	Standard Lot	142151.3
101285848	2	2	DP210329	Standard Lot	20242.7
101285219	2	6	DP210329	Standard Lot	20217.7
103713817	2	2	DP529457	Standard Lot	1968.1

CADID	Controlling Entity	Lot No.	Plan Label	Lot Class	Area (sq m)
101285529	2	12	DP776873	Standard Lot	1000.2
101285432	2	16	DP776873	Standard Lot	966.7
101285611	2	2	DP776873	Standard Lot	1097.5
101285535	2	23	DP776873	Standard Lot	975.7
101285520	2	27	DP776873	Standard Lot	1000.3
101285428	2	30	DP776873	Standard Lot	1000.7
101285422	2	34	DP776873	Standard Lot	965.5
101285431	2	38	DP776873	Standard Lot	1001.9
101285604	2	5	DP776873	Standard Lot	1023.0
101285533	2	9	DP776873	Standard Lot	999.7
101285373	2	4	DP594426	Standard Lot	962.3
102321940	2	2	DP730136	Standard Lot	109776.1
101283857	2	1	DP730136	Standard Lot	84042.0
103946857	2	101	DP877735	Standard Lot	23046.7
104148145	2	20	DP1005909	Standard Lot	13176.5
103946902	2	62	DP879419	Standard Lot	104455.6
104557230	2	50	DP879154	Standard Lot	40074.4
104355509	2	221	DP1024835	Standard Lot	70288.6
104516256	2	50	DP711829	Standard Lot	19971.8
104635816	2	51	DP1045297	Standard Lot	439.4
101200281	2	2	DP216580	Standard Lot	88592.8
101285815	2	301	DP623982	Standard Lot	167034.0
101201121	2	1	DP513978	Standard Lot	108.5
101283929	2	22	DP700971	Standard Lot	79943.2
101283931	2	102	DP707514	Standard Lot	73653.5
101285556	2	1	DP540843	Standard Lot	955.0
101285699	2	3	DP205516	Standard Lot	885.4
101285856	2	1	DP588138	Standard Lot	323935.7
101285223	2	2	DP561401	Standard Lot	115455.5
101285696	2	2	DP556481	Standard Lot	993.6
101199610	2	21	DP778701	Standard Lot	20032.3
101200942	2	1	DP527547	Standard Lot	101353.7
101199484	2	100	DP877036	Standard Lot	35254.3
103946858	2	102	DP877735	Standard Lot	14066.2
103960452	2	3	DP881528	Standard Lot	77638.6
101283919	2	18	DP775934	Standard Lot	20689.2
101284017	2	2	DP654051	Standard Lot	131516.0
104635813	1	2	DP772593	Standard Lot	97476.3
104541991	2	101	DP1044864	Standard Lot	30968.4
101199892	2	22	DP829002	Standard Lot	16781.1
101285818	2	1	DP539113	Standard Lot	162045.6
101284026	2	A	DP419022	Standard Lot	48511.8
101285457	2	2	DP540843	Standard Lot	996.3
101285622	2	2	DP569571	Standard Lot	2971.1
101285734	2	61	DP714960	Standard Lot	11222.4
101285858	2	2	DP588138	Standard Lot	2021.4
101200883	2	1	DP585567	Standard Lot	13064.3
101285804	2	302	DP623982	Standard Lot	52834.6
101201120	2	2	DP513978	Standard Lot	48.7
104463688	3	92	DP721526	Standard Lot	561866.1
101201146	2	2	DP556124	Standard Lot	141966.8
104541998	2	103	DP1044864	Standard Lot	20458.6
103776088	2	2	DP818975	Standard Lot	33209.4
103824243	3	7012	DP1059324	Standard Lot	31227.6
104687010	2	121	DP1032971	Standard Lot	81538.9

CADID	Controlling Entity	Lot No.	Plan Label	Lot Class	Area (sq m)
104630323	2	1092	DP1054357	Standard Lot	22137.4
103713820	2	1	DP21608	Standard Lot	1391.7
101283977	2	21	DP700971	Standard Lot	21167.1
101283989	2	101	DP707514	Standard Lot	27512.1
101285555	2	4	DP540843	Standard Lot	1048.0
101285648	2	2	DP205516	Standard Lot	821.1
101285735	2	63	DP714960	Standard Lot	1019.5
101200041	2	221	DP788320	Standard Lot	19828.8
101200991	2	511	DP773816	Standard Lot	161333.8
104224289	2	9	DP1049511	Standard Lot	759416.5
104475491	2	22	DP572558	Standard Lot	137023.7
104516257	2	511	DP876738	Standard Lot	64238.9
101284221	2	2	DP729598	Standard Lot	64325.7
101283922	2	19	DP775934	Standard Lot	93710.9
103713818	2	4	DP21608	Standard Lot	1258.7
103960453	2	2	DP881528	Standard Lot	20029.5
104063417	4	1	DP1000355	Standard Lot	1720.5
101284034	2	11	DP806350	Standard Lot	20041.0
101289725	2	1	DP556218	Standard Lot	6232.0
101289706	2	1	DP772593	Standard Lot	104986.9
101200054	2	B	DP940831	Standard Lot	563.0
101283998	2	2	DP613191	Standard Lot	20029.6
104355511	2	12	DP1000921	Standard Lot	40099.8
101199579	2	31	DP712872	Standard Lot	19863.9
104623669	3	7002	DP1053725	Standard Lot	230597.1
101657105	2	1	DP999948	Standard Lot	19533.7
104289615	2	1	DP745822	Standard Lot	555092.0
101199595	2	221	DP828453	Standard Lot	782.6
101199760	2	3	DP804133	Standard Lot	24737.2
101199845	2	7	DP804133	Standard Lot	27336.4
101199783	2	17	DP8738	Standard Lot	373298.0
101200871	2	29	DP8738	Standard Lot	57436.5
101199806	2	2	DP524934	Standard Lot	1904.0
101200011	2	2	DP718840	Standard Lot	97827.1
101283928	2	1	DP716524	Standard Lot	40760.6
101285198	2	1	DP735586	Standard Lot	442.3
101285222	2	4	DP210329	Standard Lot	20247.0
101285531	2	10	DP776873	Standard Lot	999.3
101285439	2	14	DP776873	Standard Lot	966.5
101285435	2	18	DP776873	Standard Lot	1230.5
101285530	2	21	DP776873	Standard Lot	1043.7
101285523	2	25	DP776873	Standard Lot	975.5
101285430	2	29	DP776873	Standard Lot	1000.3
101285425	2	32	DP776873	Standard Lot	1218.8
101285427	2	36	DP776873	Standard Lot	999.9
101285608	2	4	DP776873	Standard Lot	1094.9
101285605	2	7	DP776873	Standard Lot	1101.1
101285374	2	2	DP594426	Standard Lot	1014.8
101289750	2	2	DP615005	Standard Lot	3803.6
104133100	2	222	DP828453	Standard Lot	809849.1
101199634	2	152	DP625389	Standard Lot	20936.0
101199759	2	4	DP804133	Standard Lot	22146.0
101199852	2	8	DP804133	Standard Lot	21482.5
101199785	2	18	DP8738	Standard Lot	299766.5
101200869	2	30	DP8738	Standard Lot	62606.6

CADID	Controlling Entity	Lot No.	Plan Label	Lot Class	Area (sq m)
101199805	2	3	DP524934	Standard Lot	665.4
101200316	2	1	DP233845	Standard Lot	178549.3
101289793	2	4	DP615005	Standard Lot	37164.0
101283904	2	2	DP716524	Standard Lot	168144.6
101285849	2	1	DP210329	Standard Lot	25537.5
101285221	2	5	DP210329	Standard Lot	20245.6
101285291	2	1	DP529457	Standard Lot	6933.0
101285528	2	11	DP776873	Standard Lot	999.6
101285437	2	15	DP776873	Standard Lot	984.7
101285526	2	19	DP776873	Standard Lot	1190.0
101285532	2	22	DP776873	Standard Lot	1084.8
101285522	2	26	DP776873	Standard Lot	1000.2
101285610	2	3	DP776873	Standard Lot	1097.8
101285349	2	33	DP776873	Standard Lot	1023.9
101285429	2	37	DP776873	Standard Lot	999.5
101285348	2	40	DP776873	Standard Lot	15173.1
101285534	2	8	DP776873	Standard Lot	999.2
103713814	2	3	DP594426	Standard Lot	1060.6
104495418	2	81	DP752054	Standard Lot	234910.4
101199439	2	1	DP225273	Standard Lot	100998.6
101199497	2	25	DP249632	Standard Lot	98870.2
101199851	2	1	DP600506	Standard Lot	1929.5
101200873	2	11	DP746335	Standard Lot	20181.8
101200899	2	3	DP216237	Standard Lot	40930.3
101283870	2	100	DP752042	Standard Part Lot	343.5
101284198	2	1	DP603133	Standard Lot	34578.5
101285304	2	2	DP214110	Standard Lot	978.7
101285260	2	6	DP214110	Standard Lot	986.7
101285294	2	2	DP38713	Standard Lot	899.8
103947457	2	6	DP38713	Standard Lot	937.1
101285447	2	1	DP507820	Standard Lot	722.1
101285618	2	11	DP747040	Standard Lot	1008.0
101285665	2	15	DP747040	Standard Lot	1006.6
101285719	2	19	DP747040	Standard Lot	977.7
101285438	2	3	DP747040	Standard Lot	992.9
101285539	2	7	DP747040	Standard Lot	993.9
101285819	2	2	DP804375	Standard Lot	15847.2
104443315	2	31	DP242897	Standard Lot	14.6
104443313	2	36	DP242897	Standard Lot	698.9
101285837	2	46	DP242897	Standard Lot	504.6
101199499	2	11	DP623659	Standard Lot	19834.0
101199761	2	2	DP804133	Standard Lot	21981.6
101199983	2	6	DP804133	Standard Lot	21793.1
101201067	2	27	DP8738	Standard Lot	63457.4
101199812	2	1	DP524934	Standard Lot	2141.1
101200012	2	1	DP718840	Standard Lot	38708.7
101200314	2	3	DP233845	Standard Lot	160436.8
101285847	2	3	DP210329	Standard Lot	20243.3
101285612	2	1	DP776873	Standard Lot	997.0
101285441	2	13	DP776873	Standard Lot	995.5
101285434	2	17	DP776873	Standard Lot	977.4
101285527	2	20	DP776873	Standard Lot	1116.5
101285524	2	24	DP776873	Standard Lot	975.6
101285518	2	28	DP776873	Standard Lot	1000.2
101285426	2	31	DP776873	Standard Lot	1002.4

CADID	Controlling Entity	Lot No.	Plan Label	Lot Class	Area (sq m)
101285424	2	35	DP776873	Standard Lot	978.1
101285519	2	39	DP776873	Standard Lot	998.4
101285603	2	6	DP776873	Standard Lot	1025.1
101285375	2	1	DP594426	Standard Lot	996.7
101289755	2	1	DP615005	Standard Lot	4572.1
103713813	2	1	DP542977	Standard Lot	896.6
101285862	2	4	DP561401	Standard Lot	5662.6
101285882	3	2	DP247551	Standard Lot	4384.4
101201050	2	1	DP221431	Standard Lot	2071.3
101285371	2	38	DP787520	Standard Lot	2043.0
101285827	2	102	DP632722	Standard Lot	4265.9
101199644	2	2	DP553170	Standard Lot	20121.5
101201043	2	4	DP229156	Standard Lot	502.5
103946903	2	61	DP879419	Standard Lot	20310.9
103691634	2	12	DP852649	Standard Lot	2336.7
101199559	2	20	DP778701	Standard Lot	83444.0
104228831	2	1	DP954424	Standard Lot	2326148.8
101201049	2	2	DP221431	Standard Lot	56083.4
101285220	2	1	DP561401	Standard Lot	101920.6
101285695	2	1	DP556481	Standard Lot	1079.6
101199438	2	3	DP553170	Standard Lot	454076.0
101199893	2	21	DP829002	Standard Lot	16603.9
101200946	2	7	DP229156	Standard Lot	86181.8
101285367	2	39	DP787520	Standard Lot	2113.8
104400859	2	120	DP1032971	Standard Lot	20107.8
101199462	2	1	DP515899	Standard Lot	5084.8
101199495	2	27	DP249632	Standard Lot	101189.2
101199709	2	1	DP588985	Standard Lot	42623.4
101200875	2	13	DP746335	Standard Lot	20246.6
101200897	2	1	DP216237	Standard Lot	99077.5
101201197	2	2	DP572157	Standard Lot	103916.7
104229337	2	62	DP1012408	Standard Lot	53826.5
104399250	2	66	DP1012408	Standard Lot	31871.3
101283872	2	100	DP752042	Standard Part Lot	2752.1
101283863	2	98	DP752042	Standard Part Lot	5139.5
104244526	2	13	DP1013745	Standard Lot	218452.1
101285298	2	4	DP214110	Standard Lot	983.8
101285256	2	8	DP214110	Standard Lot	969.4
101285297	2	4	DP38713	Standard Lot	915.5
103947447	2	8	DP38713	Standard Lot	915.1
101285362	2	1	DP747040	Standard Lot	1082.7
101285663	2	13	DP747040	Standard Lot	1013.0
101285667	2	17	DP747040	Standard Lot	1003.5
101285720	2	20	DP747040	Standard Lot	1013.0
101285536	2	5	DP747040	Standard Lot	995.6
101285541	2	9	DP747040	Standard Lot	977.8
104443314	2	29	DP242897	Standard Lot	62.8
104443311	2	34	DP242897	Standard Lot	44.8
101285835	2	44	DP242897	Standard Lot	60.5
104291174	2	101	DP1018350	Standard Lot	5237.7
104463693	2	1	DP913122	Standard Lot	15063.9
104541990	2	22	DP865777	Standard Lot	56111.2
104630413	2	6	DP635391	Standard Lot	364848.1
104657329	2	62	DP1058091	Standard Lot	1016.6
101200008	2	1	DP959711	Standard Lot	402076.9

CADID	Controlling Entity	Lot No.	Plan Label	Lot Class	Area (sq m)
101284060	2	72	DP206357	Standard Lot	56316.0
101284168	2	1	DP629717	Standard Lot	21209.7
104355508	2	222	DP1024835	Standard Lot	20009.4
103846006	2	202	DP869647	Standard Lot	115321.1
101285861	2	3	DP561401	Standard Lot	20112.5
101285880	3	1	DP247551	Standard Lot	6599.4
104723468	2	51	DP740992	Standard Lot	24177.2
101200978	2	2	DP527547	Standard Lot	77988.3
104399260	2	72	DP1033161	Standard Lot	19822.9
101283979	2	621	DP717475	Standard Lot	20189.2
104312702	2	50	DP738015	Standard Lot	533589.1
101199493	2	28	DP249632	Standard Lot	522437.7
101200874	2	14	DP746335	Standard Lot	18227.6
101201199	2	3	DP572157	Standard Lot	105113.5
101283865	2	99	DP752042	Standard Part Lot	6430.9
101284199	2	7	DP38563	Standard Lot	119779.7
101285305	2	1	DP214110	Standard Lot	993.6
101285262	2	5	DP214110	Standard Lot	976.3
101285293	2	1	DP38713	Standard Lot	1772.7
103947456	2	5	DP38713	Standard Lot	901.1
101285419	2	2011	DP816578	Standard Lot	1961.7
101285542	2	10	DP747040	Standard Lot	1005.0
101285664	2	14	DP747040	Standard Lot	962.0
101285718	2	18	DP747040	Standard Lot	995.2
101285721	2	21	DP747040	Standard Lot	1085.1
101285537	2	6	DP747040	Standard Lot	991.9
101285809	2	1	DP804375	Standard Lot	13550.2
104443316	2	30	DP242897	Standard Lot	30.1
104443312	2	35	DP242897	Standard Lot	474.5
101285836	2	45	DP242897	Standard Lot	19.7
104691212	2	113	DP1061254	Standard Lot	1009.3
101200003	2	1	DP394414	Standard Part Lot	29243.9
101285202	2	1	DP816238	Standard Lot	135426.3
104661690	2	1	DP772025	Standard Lot	467060.0
101285248	2	101	DP588314	Standard Lot	17838.2
101285830	2	101	DP632722	Standard Lot	3964.2
101199429	2	1	DP553170	Standard Lot	665282.4
101199586	2	21	DP624160	Standard Lot	10930.1
104723467	2	2	DP1067077	Standard Lot	403977.3
101285249	2	1	DP245866	Standard Lot	92132.8
104475489	2	23	DP572558	Standard Lot	129355.3
104687007	2	512	DP876738	Standard Lot	20144.2
104421486	2	1302	DP1034807	Standard Lot	470638.7
101199440	2	2	DP225273	Standard Lot	116137.2
101199878	2	1	DP8999	Standard Lot	1250.7
101199498	2	26	DP249632	Standard Lot	98498.5
101199615	2	102	DP804424	Standard Lot	24049.9
101199850	2	2	DP600506	Standard Lot	3817.9
101199910	2	13	DP8999	Standard Lot	1172.7
101199864	2	17	DP8999	Standard Lot	1193.1
101199923	2	20	DP8999	Standard Lot	1195.8
101199822	2	24	DP8999	Standard Lot	1186.9
101199918	2	3	DP8999	Standard Lot	1252.7
101199821	2	35	DP8999	Standard Lot	36639.5
101199914	2	7	DP8999	Standard Lot	1279.8

CADID	Controlling Entity	Lot No.	Plan Label	Lot Class	Area (sq m)
101199764	2	104	DP249189	Standard Lot	159891.4
104630415	2	11	DP243079	Standard Lot	215474.8
101200872	2	12	DP746335	Standard Lot	20227.8
101200302	2	1	DP572157	Standard Lot	106142.8
104630421	2	6	DP243079	Standard Lot	308343.4
104080165	2	2	DP570000	Standard Lot	17744.8
101201104	2	1	DP732582	Standard Lot	27325.7
101201115	2	5	DP776139	Standard Lot	20576.2
101283914	2	21	DP787950	Standard Lot	86983.5
101283930	2	11	DP3221	Standard Lot	40513.3
101283990	2	6	DP3221	Standard Lot	40683.7
101288903	9	28	DP752027	Standard Lot	803606.6
101288901	9	66	DP752027	Standard Lot	183458.9
103497950	9	70	DP752027	Standard Lot	160929.8
101288902	9	74	DP752027	Standard Lot	158487.6
101289036	2	202	DP785312	Standard Lot	15017.6
104440006	9	20	DP751301	Standard Part Lo	4162.4
104440005	9	20	DP751301	Standard Part Lo	9672.3
101285596	2	10	DP255654	Standard Lot	1172.9
101285584	2	15	DP255654	Standard Lot	1412.4
101285489	2	19	DP255654	Standard Lot	1308.8
104548518	2	72	DP751301	Standard Part Lo	3549.2
104548516	2	72	DP751301	Standard Part Lo	3693.0
101289049	2	120	DP751301	Standard Lot	163154.1
104187108	2	25	DP255654	Standard Lot	987.8
101285573	2	29	DP255654	Standard Lot	1203.6
101285576	2	32	DP255654	Standard Lot	1120.8
101285582	2	36	DP255654	Standard Lot	1162.1
101285600	2	4	DP255654	Standard Lot	1188.2
101285654	2	43	DP255654	Standard Lot	1166.1
101285660	2	47	DP255654	Standard Lot	443.8
101285593	2	8	DP255654	Standard Lot	1103.2
101285893	2	1	DP819972	Standard Lot	19949.7
101292296	2	B	DP432055	Standard Part Lo	42259.4
101283873	2	101	DP752042	Standard Part Lo	620.8
101283853	2	80	DP752042	Standard Part Lo	931.2
101285822	2	1	DP237433	Standard Lot	20233.3
101284195	2	2	DP603133	Standard Lot	55685.7
101285301	2	3	DP214110	Standard Lot	975.2
101285259	2	7	DP214110	Standard Lot	994.0
101285295	2	3	DP38713	Standard Lot	923.1
103947458	2	7	DP38713	Standard Lot	928.4
101285448	2	2	DP507820	Standard Lot	1215.6
104287413	2	12	DP747040	Standard Lot	982.7
101285666	2	16	DP747040	Standard Lot	1014.9
101285364	2	2	DP747040	Standard Lot	1030.9
101285440	2	4	DP747040	Standard Lot	1005.1
101285540	2	8	DP747040	Standard Lot	993.3
104443310	2	33	DP242897	Standard Lot	29.8
101285834	2	43	DP242897	Standard Lot	118.9
103497949	2	1	DP830642	Standard Lot	758351.1
102965368	2	609	DP849628	Standard Lot	1025.0
104229341	2	64	DP1012408	Standard Lot	44830.5
104495419	9	2	DP1041062	Standard Lot	237153.2
104541988	2	4	DP701037	Standard Lot	18076.5

CADID	Controlling Entity	Lot No.	Plan Label	Lot Class	Area (sq m)
101201126	2	4	DP253922	Standard Lot	328796.8
103903803	2	91	DP874485	Standard Lot	40930.5
101200102	2	1	DP111166	Standard Lot	642.1
101199435	2	B	DP341802	Standard Lot	2695.2
101200164	2	9	DP230243	Standard Lot	101129.4
101200778	2	1	DP361356	Standard Lot	13221.0
104229334	2	61	DP1012408	Standard Lot	36153.0
104229343	2	65	DP1012408	Standard Lot	39330.4
104244527	2	12	DP1013745	Standard Lot	161927.1
104541989	2	21	DP865777	Standard Lot	24099.3
104657332	2	61	DP1058091	Standard Lot	1004.9
101284058	2	71	DP206357	Standard Lot	56119.8
104229332	2	A	DP62283	Standard Lot	1059434.8
101199779	2	21	DP656919	Standard Lot	149990.1
101201124	2	5	DP253922	Standard Lot	16539.5
104133118	2	12	DP285583	Standard Lot	130594.6
104133106	2	3	DP285583	Standard Lot	30691.4
104133115	2	7	DP285583	Standard Lot	10071.3
103946904	2	201	DP869647	Standard Lot	19720.3
104399259	2	71	DP1033161	Standard Lot	19650.2
101283946	2	620	DP717475	Standard Lot	104910.5
104691213	2	112	DP1061254	Standard Lot	1010.6
104421485	2	1	DP1022620	Standard Lot	449693.1
104170700	2	24	DP242574	Standard Lot	101714.7
101199794	2	A	DP421246	Standard Lot	25920.5
101199912	2	11	DP8999	Standard Lot	1242.9
101199908	2	15	DP8999	Standard Lot	1314.8
101199924	2	19	DP8999	Standard Lot	1234.4
101199921	2	22	DP8999	Standard Lot	1229.2
101199932	2	26	DP8999	Standard Lot	1186.0
101199926	2	33	DP8999	Standard Lot	5756.0
101199916	2	5	DP8999	Standard Lot	1176.4
101199877	2	9	DP8999	Standard Lot	1220.3
101200293	2	4	DP243079	Standard Lot	238407.5
104630419	2	9	DP243079	Standard Lot	168209.1
101200870	2	212	DP734486	Standard Lot	1984.5
101200953	2	1	DP586801	Standard Lot	196335.8
101200278	2	3	DP732582	Standard Lot	52798.4
101201223	2	7	DP776139	Standard Lot	26805.3
101285587	2	12	DP255654	Standard Lot	1428.4
101285577	2	17	DP255654	Standard Lot	1351.4
101285488	2	20	DP255654	Standard Lot	1251.6
101285568	2	27	DP255654	Standard Lot	1246.7
101285574	2	30	DP255654	Standard Lot	1127.6
101285579	2	34	DP255654	Standard Lot	1167.0
101285588	2	38	DP255654	Standard Lot	1213.4
101285651	2	41	DP255654	Standard Lot	1234.2
101285653	2	45	DP255654	Standard Lot	1166.5
101285598	2	6	DP255654	Standard Lot	1162.5
101285493	2	191	DP837485	Standard Lot	505.8
101285838	2	1	DP629718	Standard Lot	24698.3
101199750	2	2	DP576136	Standard Lot	608815.8
101200414	3	7007	DP1058715	Standard Lot	71949.0
101285884	9	64	DP752027	Standard Lot	139569.9
101288904	9	68	DP752027	Standard Lot	224205.4

CADID	Controlling Entity	Lot No.	Plan Label	Lot Class	Area (sq m)
103497951	9	72	DP752027	Standard Lot	5598.2
101292217	2	204	DP785312	Standard Lot	7725.7
104505063	2	114	DP751301	Standard Part Lo	4214.5
104679638	2	26	DP751301	Standard Part Lo	313609.6
104679643	2	69	DP751301	Standard Part Lo	231614.8
101303265	2	130	DP751301	Standard Lot	169863.9
104679630	2	71	DP751301	Standard Lot	425304.1
101283909	2	4	DP568675	Standard Lot	95989.4
101283932	2	B	DP183855	Standard Lot	101165.7
101283955	2	13	DP3221	Standard Lot	40475.9
101284027	2	100	DP732287	Standard Lot	19997.9
101284109	2	24	DP12665	Standard Lot	201641.9
101284216	2	1	DP629722	Standard Lot	57345.1
101289033	2	53	DP234711	Standard Lot	774.3
104170706	2	1	DP625921	Standard Lot	54261.6
104421487	2	1301	DP1034807	Standard Lot	402498.1
101285197	2	4	DP123069	Standard Part Lo	99948.7
104229339	2	63	DP1012408	Standard Lot	46568.6
104229340	2	67	DP1012408	Standard Lot	22697.9
104244522	2	14	DP1013745	Standard Lot	190844.8
104542000	2	3	DP701037	Standard Lot	100055.5
104557229	2	6	DP244694	Standard Lot	20807.5
101199795	2	C	DP421246	Standard Lot	725.7
101199911	2	12	DP8999	Standard Lot	1221.5
101199881	2	16	DP8999	Standard Lot	1156.3
101199919	2	2	DP8999	Standard Lot	1227.2
101199920	2	23	DP8999	Standard Lot	1253.5
101199931	2	27	DP8999	Standard Lot	1231.4
101199824	2	34	DP8999	Standard Lot	5176.3
101199915	2	6	DP8999	Standard Lot	1243.4
101199906	2	1	DP176334	Standard Lot	8151.2
104630417	2	10	DP243079	Standard Lot	165182.0
101200294	2	5	DP243079	Standard Lot	187403.4
101201224	2	4	DP732582	Standard Lot	2858.2
101201106	2	8	DP776139	Standard Lot	26405.9
104679631	2	3	DP60975	Standard Lot	198748.0
101283917	2	20	DP787950	Standard Lot	20877.9
101283935	2	10	DP3221	Standard Lot	40565.8
101283970	2	14	DP3221	Standard Lot	40888.5
101284019	2	101	DP732287	Standard Lot	109614.8
101284200	2	2	DP629722	Standard Lot	42878.8
101285659	2	1	DP255654	Standard Lot	1090.8
101285585	2	14	DP255654	Standard Lot	1343.6
101285490	2	18	DP255654	Standard Lot	1320.2
101285487	2	21	DP255654	Standard Lot	1243.4
101285571	2	28	DP255654	Standard Lot	1337.9
101285575	2	31	DP255654	Standard Lot	1118.1
101285581	2	35	DP255654	Standard Lot	1177.2
101285590	2	39	DP255654	Standard Lot	1194.3
101285652	2	42	DP255654	Standard Lot	1236.3
101285570	2	46	DP255654	Standard Lot	8504.2
101285594	2	7	DP255654	Standard Lot	1170.1
101285495	2	192	DP837485	Standard Lot	468.9
101285843	2	2	DP629718	Standard Lot	77543.2
101288908	9	69	DP752027	Standard Lot	244322.3

CADID	Controlling Entity	Lot No.	Plan Label	Lot Class	Area (sq m)
103497948	9	73	DP752027	Standard Lot	122907.0
101289028	2	201	DP785312	Standard Lot	11982.1
101289043	2	20	DP751301	Standard Part Lo	2125.9
104679637	2	27	DP751301	Standard Part Lo	214171.1
101200106	2	1	DP963033	Standard Lot	697.1
101200884	2	1	DP32421	Standard Lot	71.5
101284242	2	7	DP242894	Standard Lot	65.1
101289064	2	1	DP207820	Standard Part Lo	19200.8
101656962	2	11	DP999885	Standard Lot	2030.5
101200325	2	2	DP253922	Standard Lot	577363.2
101284064	2	8	DP22230	Standard Lot	87682.4
101283886	2	2	DP629717	Standard Lot	37165.3
104118116	2	2	DP1004595	Standard Lot	20099.1
104295236	2	2	DP609562	Standard Lot	39141.6
101199446	2	1	DP1022655	Standard Lot	917020.4
101285586	2		SP56036	Strata	1318.2
104399261	2	73	DP1033161	Standard Lot	123306.2
101285224	2	21	DP746758	Standard Lot	4004.2
101199651	2	541	DP746323	Standard Lot	44747.9
101199736	2	21	DP811782	Standard Lot	34696.0
101200040	2	23	DP249416	Standard Lot	101125.8
101200157	2	1	DP420139	Standard Lot	8065.0
101200331	2	23	DP251051	Standard Lot	33813.0
101201135	2	6	DP702024	Standard Lot	114.0
101201018	2	1	DP218161	Standard Part Lo	65553.4
101201035	2	1	DP31244	Standard Lot	3917.8
101201019	2	13	DP31244	Standard Lot	4029.8
101201012	2	17	DP31244	Standard Lot	4075.5
101201031	2	3	DP31244	Standard Lot	3985.6
101201027	2	7	DP31244	Standard Lot	4090.8
101199512	2	114	DP751287	Standard Part Lo	977879.5
104351311	3	7011	DP1026299	Standard Lot	149645.2
101200051	2	2	DP835196	Standard Lot	89180.1
101200742	2	1	DP57337	Standard Lot	3236506.2
101283890	2	2	DP629721	Standard Lot	18749.0
101283927	2	204	DP710181	Standard Lot	49962.7
101284194	2	10	DP242891	Standard Lot	23.2
101285417	2	202	DP815532	Standard Lot	1039.7
101285502	2	206	DP815532	Standard Lot	1052.8
101285913	2	210	DP815532	Standard Lot	995.4
101285904	2	214	DP815532	Standard Lot	975.3
101285507	2	218	DP815532	Standard Lot	972.8
101285915	2	222	DP815532	Standard Lot	1288.6
101285908	2	226	DP815532	Standard Lot	1033.9
101289054	9	2	DP255282	Standard Lot	314986.8
101289069	9	8	DP255282	Standard Lot	2870.6
104133119	2	10	DP285583	Standard Lot	10065.6
104133104	2	14	DP285583	Standard Lot	17314.5
104133114	2	5	DP285583	Standard Lot	19036.9
104133117	2	9	DP285583	Standard Lot	10396.4
104133120	2	11	DP285583	Standard Lot	11095.8
104133116	2	6	DP285583	Standard Lot	12741.2
104170702	2	22	DP242574	Standard Lot	99873.6
104170710	2	26	DP242574	Standard Lot	110750.6
104243559	2	2	DP732571	Standard Lot	18619.6

CADID	Controlling Entity	Lot No.	Plan Label	Lot Class	Area (sq m)
104170701	2	23	DP242574	Standard Lot	102311.2
104756224	2	11	DP1069125	Standard Lot	1054.5
101199455	2	6	DP243396	Standard Lot	103470.8
101200079	2	121	DP788371	Standard Lot	20054.0
101284081	2	3	DP559038	Standard Lot	20223.2
101283855	2	3	DP625921	Standard Lot	58891.4
101199749	2	1	DP576136	Standard Lot	480492.7
101200078	2	122	DP788371	Standard Lot	20122.7
101284082	2	4	DP559038	Standard Lot	20227.5
101284217	2	1	DP34465	Standard Lot	18359.2
101285444	2	1	DP747042	Standard Lot	4028.6
104187097	2	1	DP228517	Standard Lot	14656.0
104225762	2	31	DP1012256	Standard Lot	4004.4
101199793	2	1	DP583323	Standard Lot	56538.1
101200447	2	2	DP225253	Standard Lot	948472.5
101283877	2	10	DP242894	Standard Lot	256.7
101288870	2	1	DP227091	Standard Lot	82634.3
104187094	2	2	DP228517	Standard Lot	2150.9
104225763	2	32	DP1012256	Standard Lot	24052.5
104542008	2	1	DP244694	Standard Lot	20880.7
104118117	2	2	DP868682	Standard Lot	40280.9
104371478	2	32	DP1029906	Standard Lot	240.2
104661687	2	1	DP58067	Standard Lot	604440.7
101199672	2	1	DP415714	Standard Lot	248.2
101195282	2	2	DP330937	Standard Lot	1375.0
101199861	2	2	DP583323	Standard Lot	556.1
104218494	2	101	DP836294	Standard Lot	48950.8
101284241	2	6	DP242894	Standard Lot	394.4
101288912	2	2	DP227091	Standard Lot	87510.2
101199913	2	10	DP8999	Standard Lot	1218.4
101199909	2	14	DP8999	Standard Lot	1242.0
101199925	2	18	DP8999	Standard Lot	1220.3
101199922	2	21	DP8999	Standard Lot	1188.8
101199928	2	25	DP8999	Standard Lot	1226.3
101199927	2	32	DP8999	Standard Lot	6172.7
101199917	2	4	DP8999	Standard Lot	1212.5
101199879	2	8	DP8999	Standard Lot	1140.4
101200292	2	3	DP243079	Standard Lot	177831.1
104630420	2	8	DP243079	Standard Lot	167484.6
101200759	2	211	DP734486	Standard Lot	99372.1
101200442	2	3	DP570000	Standard Lot	328746.8
101200277	2	2	DP732582	Standard Lot	25151.2
101201105	2	6	DP776139	Standard Lot	35457.2
103824242	3	7001	DP1059322	Standard Lot	41372.5
104295237	2	1	DP609562	Standard Lot	37908.4
104687014	2	10	DP230244	Standard Lot	101824.5
101283947	2	A	DP183855	Standard Lot	101128.1
101283943	2	12	DP3221	Standard Lot	40461.1
101283982	2	7	DP3221	Standard Lot	40521.8
101284056	2	20	DP12665	Standard Lot	126646.7
101285384	2	1	DP596928	Standard Lot	4263.3
101285589	2	11	DP255654	Standard Lot	1355.5
101285580	2	16	DP255654	Standard Lot	1377.9
101285658	2	2	DP255654	Standard Lot	1316.2
101285567	2	26	DP255654	Standard Lot	1143.3

CADID	Controlling Entity	Lot No.	Plan Label	Lot Class	Area (sq m)
101285656	2	3	DP255654	Standard Lot	1192.5
101285578	2	33	DP255654	Standard Lot	1150.5
101285583	2	37	DP255654	Standard Lot	1178.5
101285591	2	40	DP255654	Standard Lot	1185.7
101285655	2	44	DP255654	Standard Lot	1153.8
101285599	2	5	DP255654	Standard Lot	1203.2
101285597	2	9	DP255654	Standard Lot	1084.5
101285823	2	2	DP518975	Standard Lot	20241.4
101289045	3	116	DP751301	Standard Lot	163395.1
101303333	3	139	DP751301	Standard Lot	156617.5
101289744	2	52	DP234711	Standard Lot	720.9
103497952	9	5	DP752027	Standard Lot	242211.4
101288905	9	67	DP752027	Standard Lot	185767.1
101288909	9	71	DP752027	Standard Lot	211500.2
101289034	2	203	DP785312	Standard Lot	6842.5
104630325	2	80	DP625240	Standard Lot	20026.0
104653158	2	1	DP1058518	Standard Lot	48.2
103713826	3	7001	DP92836	Standard Lot	29100.8
104187106	2	14	DP1009041	Standard Lot	982.3
104187084	2	18	DP1009041	Standard Lot	1215.1
101201032	2	2	DP31244	Standard Lot	4102.3
101201028	2	6	DP31244	Standard Lot	4016.3
101201136	2	32	DP251050	Standard Lot	234.0
101199627	2	41	DP733026	Standard Lot	20178.6
104371479	2	20	DP811782	Standard Lot	5154.1
101199954	2	1	DP809141	Standard Lot	1747.9
101200112	2	1	DP979893	Standard Lot	696.4
101201133	2	13	DP702024	Standard Lot	631647.9
101201132	2	5	DP702024	Standard Lot	201257.7
101200865	2	2	DP210206	Standard Lot	41118.7
101200738	2	21	DP31244	Standard Part Lot	3743.4
101201020	2	12	DP31244	Standard Lot	4074.8
101201011	2	16	DP31244	Standard Lot	4104.4
101283888	2	1	DP629721	Standard Lot	32622.7
101283925	2	203	DP710181	Standard Lot	50033.1
101283887	2	3	DP629716	Standard Lot	27135.1
101285700	2	C	DP389406	Standard Lot	1559.9
101285911	2	205	DP815532	Standard Lot	1047.6
101285914	2	209	DP815532	Standard Lot	975.2
101285905	2	213	DP815532	Standard Lot	975.3
101285506	2	217	DP815532	Standard Lot	976.0
101285916	2	221	DP815532	Standard Lot	1198.5
101285897	2	225	DP815532	Standard Lot	1229.3
104331772	2	124	DP1020102	Standard Lot	59337.4
104316848	2	128	DP1020102	Standard Lot	44756.3
104461773	2	132	DP1020102	Standard Lot	74670.3
101199502	2	22	DP747790	Standard Lot	73804.1
101199817	2	5	DP565514	Standard Lot	4053.6
101200018	2	26	DP249416	Standard Lot	101084.4
101200349	2	10	DP702024	Standard Lot	37211.1
101201139	2	4	DP702024	Standard Lot	5636.0
101200786	2	1	DP210206	Standard Lot	44450.7
101201009	2	20	DP31244	Standard Part Lot	3952.1
101201021	2	11	DP31244	Standard Lot	4082.3
101201016	2	15	DP31244	Standard Lot	4125.7

CADID	Controlling Entity	Lot No.	Plan Label	Lot Class	Area (sq m)
101201010	2	19	DP31244	Standard Lot	4174.8
101201029	2	5	DP31244	Standard Lot	4089.4
101201025	2	9	DP31244	Standard Lot	4196.1
104595018	2	202	DP865507	Standard Lot	8717.2
101283938	2	202	DP710181	Standard Lot	51218.8
101284145	2	25	DP818437	Standard Lot	470639.5
101284167	2	2	DP629716	Standard Lot	4197.7
101285702	2	A	DP389406	Standard Lot	1423.8
101285420	2	204	DP815532	Standard Lot	1310.1
101285344	2	208	DP815532	Standard Lot	977.8
101285906	2	212	DP815532	Standard Lot	975.3
101285504	2	216	DP815532	Standard Lot	975.1
101285910	2	220	DP815532	Standard Lot	980.3
101285898	2	224	DP815532	Standard Lot	1009.6
101289067	9	4	DP255282	Standard Lot	4217.2
101199480	2	5	DP261688	Standard Lot	40911.2
101200943	2	1	DP900152	Standard Lot	91092.6
103861547	2	1	DP871417	Standard Lot	41929.1
103691632	2	11	DP864208	Standard Lot	2245.0
101200749	2	B	DP386997	Standard Lot	80744.7
101220845	2	1	DP107660	Standard Lot	253.7
101284022	2	31	DP612577	Standard Lot	62132.3
104249708	2	2	DP826121	Standard Lot	163367.3
104133107	2	13	DP285583	Standard Lot	11980.8
104133111	2	4	DP285583	Standard Lot	19506.3
104133110	2	8	DP285583	Standard Lot	10029.0
104463684	2	1	DP744563	Standard Lot	8627.4
101199626	2	51	DP732090	Standard Lot	20356.6
104170703	2	21	DP242574	Standard Lot	100950.1
104170711	2	25	DP242574	Standard Lot	99744.2
101200877	2	1	DP732571	Standard Lot	69859.9
101199584	2	3	DP243396	Standard Lot	101257.8
101199839	2	3	DP576136	Standard Lot	6740.8
101201114	2	2	DP252362	Standard Lot	325741.8
101284076	2	2	DP559038	Standard Lot	20223.6
104557236	2	232	DP868645	Standard Lot	26523.4
104173793	2	13	DP1008501	Standard Lot	36292.1
101284166	2	9	DP242894	Standard Lot	241.2
103841308	2	1	DP868682	Standard Lot	40795.7
104118115	2	3	DP1004595	Standard Lot	83267.6
104371476	2	31	DP1029906	Standard Lot	9660.8
101283975	2	11	DP734410	Standard Lot	100767.7
104187104	2	13	DP1009041	Standard Lot	988.5
104187100	2	17	DP1009041	Standard Lot	991.9
104461770	2	123	DP1020102	Standard Lot	21590.7
104316849	2	127	DP1020102	Standard Lot	20094.2
104316845	2	131	DP1020102	Standard Lot	30913.9
104595019	2	201	DP865507	Standard Lot	17055.1
101199904	2	1	DP1320	Standard Lot	5317.9
101199965	2	10	DP1320	Standard Lot	1982.0
101199945	2	11	DP1320	Standard Lot	1965.2
101199957	2	12	DP1320	Standard Lot	1642.1
101199930	2	12	DP1320	Standard Lot	840.2
104251173	2	13	DP1320	Standard Lot	4002.0
101199970	2	14	DP1320	Standard Lot	1949.5

CADID	Controlling Entity	Lot No.	Plan Label	Lot Class	Area (sq m)
101199969	2	15	DP1320	Standard Lot	1916.9
101199950	2	16	DP1320	Standard Lot	1922.9
101199811	2	19	DP1320	Standard Lot	2190.2
101199903	2	2	DP1320	Standard Lot	5114.7
101199827	2	2	DP1320	Standard Lot	1903.5
101199962	2	21	DP1320	Standard Lot	1713.0
101199960	2	23	DP1320	Standard Lot	2863.2
101199814	2	3	DP1320	Standard Lot	1637.4
104251179	2	3	DP1320	Standard Lot	2965.2
101199799	2	4	DP1320	Standard Lot	2197.8
101199855	2	5	DP1320	Standard Lot	1445.3
104251195	2	5	DP1320	Standard Lot	4584.7
101199840	2	6	DP1320	Standard Lot	5512.4
101971302	2	7	DP1320	Standard Lot	1641.3
101199968	2	7	DP1320	Standard Lot	1979.9
101199809	2	8	DP1320	Standard Lot	1569.0
101199967	2	8	DP1320	Standard Lot	1964.6
101199808	2	9	DP1320	Standard Lot	1636.1
101199834	2	9	DP1320	Standard Lot	1326.2
101200004	2	1	DP120764	Standard Lot	85680.0
101283860	2	104	DP716209	Standard Lot	21122.7
101200744	2	3	DP250359	Standard Lot	1287.2
101200748	2	7	DP250359	Standard Lot	1047.7
101200818	2	11	DP26123	Standard Lot	821.5
101200822	2	15	DP26123	Standard Lot	838.4
101200772	2	19	DP26123	Standard Lot	3451.2
101200810	2	23	DP26123	Standard Lot	836.9
101200814	2	27	DP26123	Standard Lot	792.2
101200752	2	30	DP26123	Standard Lot	867.9
101200828	2	7	DP26123	Standard Lot	1908.2
101200917	2	10	DP214417	Standard Lot	289.6
101200911	2	14	DP214417	Standard Lot	1116.5
101200908	2	18	DP214417	Standard Lot	2030.8
101200886	2	21	DP214417	Standard Lot	1038.8
101200960	2	25	DP214417	Standard Lot	1014.4
101200956	2	29	DP214417	Standard Lot	980.6
101200891	2	32	DP214417	Standard Lot	6125.3
101200934	2	36	DP214417	Standard Lot	3514.6
101200975	2	4	DP214417	Standard Lot	1140.8
101200924	2	43	DP214417	Standard Lot	1267.2
101200971	2	47	DP214417	Standard Lot	943.0
101200914	2	7	DP214417	Standard Lot	709.2
101201052	2	3	DP249565	Standard Lot	31907.2
101201140	2	1	DP629828	Standard Lot	403559.2
104187101	2	12	DP1009041	Standard Lot	978.3
104187102	2	16	DP1009041	Standard Lot	1165.6
104187098	2	20	DP1009041	Standard Lot	1124.6
104316842	2	126	DP1020102	Standard Lot	20111.5
104316847	2	130	DP1020102	Standard Lot	20530.4
101285369	2	23	DP747041	Standard Lot	1021.1
101285436	2	27	DP747041	Standard Lot	1345.1
101285393	2	10	DP258218	Standard Lot	966.4
101285386	2	14	DP258218	Standard Lot	1240.7
101285460	2	4	DP258218	Standard Lot	974.8
104187082	2	8	DP258218	Standard Lot	1003.1

CADID	Controlling Entity	Lot No.	Plan Label	Lot Class	Area (sq m)
101285693	2	2	DP569062	Standard Lot	1020.6
101285756	3	59	DP752012	Standard Lot	8116.3
103458478	3	71	DP752012	Standard Lot	13896.1
104287412	2	78	DP752012	Standard Lot	19471.2
101285772	3	85	DP752012	Standard Lot	6124.9
103458477	2	90	DP752012	Standard Lot	6353.8
104173014	2	4	DP261688	Standard Lot	140093.8
101200147	2	1	DP795181	Standard Lot	8234.8
101284137	2	4	DP627214	Standard Lot	102535.2
101199479	2	2	DP261688	Standard Lot	399207.3
101199899	2	4	DP660395	Standard Lot	2019.2
101201062	3	7008	DP96785	Standard Lot	16440.2
101199681	2	542	DP746323	Standard Lot	19579.8
101199816	2	4	DP565514	Standard Lot	5433.2
101200019	2	25	DP249416	Standard Lot	99079.9
101201149	2	1	DP702024	Standard Lot	156803.3
101201134	2	3	DP702024	Standard Lot	10944.1
101201137	2	7	DP702024	Standard Lot	26392.5
101201022	2	2	DP218161	Standard Part Lo	3945.7
101201023	2	10	DP31244	Standard Lot	4385.2
101201017	2	14	DP31244	Standard Lot	4288.6
101201013	2	18	DP31244	Standard Lot	4150.3
101201030	2	4	DP31244	Standard Lot	4073.8
101201026	2	8	DP31244	Standard Lot	4034.0
104444276	2	201	DP710181	Standard Lot	51097.6
101284223	2	1	DP818437	Standard Lot	22395.6
101284212	2	17	DP242891	Standard Lot	167.3
101285234	2	1	DP558807	Standard Lot	134190.8
101285421	2	203	DP815532	Standard Lot	1061.4
101285491	2	207	DP815532	Standard Lot	969.3
101285907	2	211	DP815532	Standard Lot	1065.3
101285503	2	215	DP815532	Standard Lot	974.6
101285515	2	219	DP815532	Standard Lot	1167.1
101285899	2	223	DP815532	Standard Lot	1134.8
101285895	2	229	DP815532	Standard Lot	1574.7
101289027	9	3	DP255282	Standard Lot	119165.0
101659732	2	30	DP845048	Standard Lot	20140.4
101659824	2	1	DP846049	Standard Lot	1164.9
103845355	2	422	DP869669	Standard Lot	29782.9
104630324	2	110	DP703373	Standard Lot	19148.7
101201212	2	Y	DP400704	Standard Lot	3334.3
101284038	2	52	DP616094	Standard Lot	65686.0
101285244	2	1	DP826121	Standard Lot	115693.9
101285661	2	1	DP527872	Standard Lot	955.3
101201038	2	21	DP556344	Standard Lot	103399.0
101284045	2	51	DP616094	Standard Lot	65706.8
101285207	2	61	DP586318	Standard Lot	16695.7
101285547	2	421	DP568048	Standard Lot	1036.3
103881069	2	2	DP872669	Standard Lot	43971.3
104375768	2	21	DP1030127	Standard Lot	5019.2
103881070	2	1	DP872669	Standard Lot	36659.3
104316852	2	121	DP882211	Standard Lot	23071.2
101200930	2	40	DP663835	Standard Lot	26332.3
101200152	2	A	DP407248	Standard Lot	70237.7
101200905	2	2	DP206280	Standard Lot	9112.3

CADID	Controlling Entity	Lot No.	Plan Label	Lot Class	Area (sq m)
101285468	2	A	DP433997	Standard Lot	3144.6
104581408	2		SP69692	Strata	2053.7
104173795	2	11	DP1008501	Standard Lot	27099.2
104173794	2	12	DP1008501	Standard Lot	33165.5
101170683	2	5	DP242871	Standard Lot	102242.7
101199611	2	121	DP630152	Standard Lot	326.3
101199807	2	10	DP1320	Standard Lot	1615.4
101199835	2	10	DP1320	Standard Lot	966.7
104251170	2	11	DP1320	Standard Lot	3986.7
101199972	2	12	DP1320	Standard Lot	1958.9
101199947	2	13	DP1320	Standard Lot	2078.8
101199955	2	14	DP1320	Standard Lot	1787.2
101199935	2	14	DP1320	Standard Lot	1525.0
101199937	2	16	DP1320	Standard Lot	2027.9
101199952	2	18	DP1320	Standard Lot	1988.8
101199979	2	19	DP1320	Standard Lot	2032.6
104251192	2	2	DP1320	Standard Lot	1975.8
101199905	2	20	DP1320	Standard Lot	1906.4
101199961	2	22	DP1320	Standard Lot	1770.7
101199959	2	24	DP1320	Standard Lot	2951.1
101199803	2	3	DP1320	Standard Lot	3028.5
101199813	2	4	DP1320	Standard Lot	1576.1
101199829	2	4	DP1320	Standard Lot	1816.2
101199800	2	5	DP1320	Standard Lot	1799.9
101971304	2	6	DP1320	Standard Lot	1619.4
104251196	2	6	DP1320	Standard Lot	4031.0
101199901	2	7	DP1320	Standard Lot	5275.0
104251197	2	7	DP1320	Standard Lot	3992.3
101199859	2	8	DP1320	Standard Lot	5388.3
104251198	2	8	DP1320	Standard Lot	4008.3
101199966	2	9	DP1320	Standard Lot	2006.0
104661700	2	102	DP716209	Standard Lot	719448.5
101200185	2	1	DP828396	Standard Lot	653.8
101200489	2	A	DP415392	Standard Lot	99876.9
101200789	2	10	DP250359	Standard Lot	2456.3
104218497	2	5	DP250359	Standard Lot	1057.5
101200830	2	1	DP26123	Standard Lot	853.9
101200820	2	13	DP26123	Standard Lot	814.5
101200824	2	17	DP26123	Standard Lot	825.0
101200808	2	21	DP26123	Standard Lot	798.8
101200812	2	25	DP26123	Standard Lot	811.8
101200753	2	29	DP26123	Standard Lot	809.6
101200826	2	5	DP26123	Standard Lot	804.0
101200816	2	9	DP26123	Standard Lot	886.8
101200920	2	12	DP214417	Standard Lot	232.0
101200919	2	16	DP214417	Standard Lot	1352.2
101200973	2	2	DP214417	Standard Lot	1248.3
101200962	2	23	DP214417	Standard Lot	993.7
101200958	2	27	DP214417	Standard Lot	974.5
101200933	2	30	DP214417	Standard Lot	1182.5
101200889	2	34	DP214417	Standard Lot	3135.1
101200936	2	38	DP214417	Standard Lot	5447.4
101200895	2	41	DP214417	Standard Lot	6185.2
101200969	2	45	DP214417	Standard Lot	1000.4
101200976	2	5	DP214417	Standard Lot	949.9

CADID	Controlling Entity	Lot No.	Plan Label	Lot Class	Area (sq m)
101200916	2	9	DP214417	Standard Lot	391.0
101200868	2	1	DP249565	Standard Lot	111806.9
101201047	2	5	DP249565	Standard Lot	4035.3
101201053	2	9	DP249565	Standard Lot	6215.7
101283900	2	1	DP613776	Standard Lot	27955.2
101285360	2	25	DP747041	Standard Lot	974.7
101285616	2	29	DP747041	Standard Lot	961.4
101285388	2	12	DP258218	Standard Lot	1085.7
101285463	2	2	DP258218	Standard Lot	1043.1
101285467	2	6	DP258218	Standard Lot	974.9
104063415	2	1	DP209779	Standard Lot	102878.5
101285690	2	3	DP604200	Standard Lot	973.4
101285753	2	62	DP752012	Standard Lot	20848.9
101285748	2	76	DP752012	Standard Lot	2270.2
101285780	2	82	DP752012	Standard Lot	20950.6
101285725	2	87	DP752012	Standard Lot	49087.0
101285845	2	6	DP789794	Standard Lot	20499.4
101285925	2	201	DP819476	Standard Lot	20005.7
101200809	2	22	DP26123	Standard Lot	838.8
101200813	2	26	DP26123	Standard Lot	820.8
101200833	2	3	DP26123	Standard Lot	844.7
101200827	2	6	DP26123	Standard Lot	1961.7
101200986	2	1	DP214417	Standard Lot	983.2
101200912	2	13	DP214417	Standard Lot	1151.1
101200909	2	17	DP214417	Standard Lot	2206.9
101200893	2	20	DP214417	Standard Lot	2258.8
101200961	2	24	DP214417	Standard Lot	971.6
101200957	2	28	DP214417	Standard Lot	967.7
101200892	2	31	DP214417	Standard Lot	985.8
101200888	2	35	DP214417	Standard Lot	2172.6
101200937	2	39	DP214417	Standard Lot	9891.5
101200894	2	42	DP214417	Standard Lot	6084.8
101200970	2	46	DP214417	Standard Lot	980.6
101288823	2	2	DP506516	Standard Lot	158361.1
101200913	2	6	DP214417	Standard Lot	1878.6
104215957	2	36	DP817111	Standard Lot	215239.7
101201051	2	2	DP249565	Standard Lot	27125.2
101201054	2	6	DP249565	Standard Lot	35368.1
101201111	2	2	DP588151	Standard Lot	124944.4
101199941	2	1	DP1320	Standard Lot	2991.3
104251182	2	1	DP1320	Standard Lot	3588.2
101199944	2	10	DP1320	Standard Lot	1939.8
101199958	2	11	DP1320	Standard Lot	1628.1
101199836	2	11	DP1320	Standard Lot	1407.1
104251171	2	12	DP1320	Standard Lot	4024.1
101199971	2	13	DP1320	Standard Lot	1982.9
101199948	2	14	DP1320	Standard Lot	1930.2
101199949	2	15	DP1320	Standard Lot	2004.2
101199936	2	15	DP1320	Standard Lot	1943.8
101199951	2	17	DP1320	Standard Lot	2004.5
101199981	2	2	DP1320	Standard Lot	3032.7
104251180	2	2	DP1320	Standard Lot	3194.2
101199978	2	20	DP1320	Standard Lot	2062.7
101199976	2	22	DP1320	Standard Lot	1968.4
101199974	2	24	DP1320	Standard Lot	3233.2

CADID	Controlling Entity	Lot No.	Plan Label	Lot Class	Area (sq m)
104251191	2	3	DP1320	Standard Lot	1988.3
101199856	2	4	DP1320	Standard Lot	1749.4
101971303	2	5	DP1320	Standard Lot	1669.1
104251188	2	5	DP1320	Standard Lot	1911.2
101199857	2	6	DP1320	Standard Lot	1567.3
101199831	2	6	DP1320	Standard Lot	2287.5
101199842	2	7	DP1320	Standard Lot	5721.1
101199832	2	7	DP1320	Standard Lot	2068.6
104188174	2	8	DP1320	Standard Lot	5540.7
101199833	2	8	DP1320	Standard Lot	1763.0
104251185	2	9	DP1320	Standard Lot	1882.7
103835409	2	2	DP250359	Standard Lot	166453.9
101200747	2	6	DP250359	Standard Lot	457.1
101200817	2	10	DP26123	Standard Lot	833.9
101200821	2	14	DP26123	Standard Lot	820.6
101200825	2	18	DP26123	Standard Lot	788.5
101200900	2	D	DP32515	Standard Lot	91106.0
101283881	2	2	DP613776	Standard Lot	13212.4
101285370	2	22	DP747041	Standard Lot	1058.8
101285361	2	26	DP747041	Standard Lot	1045.8
101285458	2	1	DP258218	Standard Lot	963.7
101285387	2	13	DP258218	Standard Lot	976.2
101285462	2	3	DP258218	Standard Lot	1170.7
104187096	2	7	DP258218	Standard Lot	1009.2
101285694	2	1	DP569062	Standard Lot	1004.7
101285228	2	14	DP752012	Standard Part Lot	3009.0
103458517	2	29	DP752012	Standard Lot	611892.1
101285731	3	57	DP752012	Standard Lot	6174.5
101285768	3	70	DP752012	Standard Lot	9259.3
101285750	2	77	DP752012	Standard Lot	1623.1
101285679	2	88	DP752012	Standard Lot	9827.0
101285853	2	7	DP789794	Standard Lot	20968.1
101285924	2	202	DP819476	Standard Lot	19975.9
101659822	2	3	DP846049	Standard Lot	1586.8
101408344	2	A	DP32515	Standard Lot	37564.3
101200932	2	E	DP32515	Standard Lot	28126.3
104187088	2	11	DP1009041	Standard Lot	1004.7
104187103	2	15	DP1009041	Standard Lot	1203.6
104187085	2	19	DP1009041	Standard Lot	1063.7
104316851	2	125	DP1020102	Standard Lot	56837.7
104316846	2	129	DP1020102	Standard Lot	74331.6
104676055	3	7004	DP1058610	Standard Lot	594596.8
101200945	2	2	DP900152	Standard Lot	90258.0
101284126	2	3	DP627214	Standard Lot	54049.3
103874165	2	567	DP871508	Standard Lot	41847.8
103947451	2	1	DP878338	Standard Lot	980.5
103947454	2	5	DP878338	Standard Lot	923.4
103952338	2	81	DP880173	Standard Lot	56070.1
104018082	2	71	DP883462	Standard Lot	20760.3
103845354	2	421	DP869669	Standard Lot	52200.7
103861546	2	2	DP871417	Standard Lot	62276.5
101200992	2	A	DP357138	Standard Lot	32788.3
101284021	2	32	DP612577	Standard Lot	62134.7
101285548	2	420	DP568048	Standard Lot	1033.5
101199461	2	52	DP802886	Standard Lot	75932.8

CADID	Controlling Entity	Lot No.	Plan Label	Lot Class	Area (sq m)
101200105	2	1	DP305932	Standard Lot	642.0
101284079	2	12	DP819909	Standard Lot	22304.0
101199994	2	41	DP810928	Standard Lot	4373.0
101200951	2	1	DP206280	Standard Lot	180.4
104331769	2	60	DP853569	Standard Lot	440729.8
101199722	2	1	DP661402	Standard Lot	187.4
103786297	2	101	DP862676	Standard Lot	53146.4
101200099	2	3	DP531901	Standard Lot	1963.4
101283987	2	152	DP825499	Standard Lot	24703.4
101285842	2	2	DP629719	Standard Lot	78686.4
103857916	2	72	DP871060	Standard Lot	80226.2
103947441	2	232	DP878835	Standard Lot	165840.6
103947453	2	3	DP878338	Standard Lot	957.0
104018083	2	73	DP883462	Standard Lot	49882.7
104173792	2	14	DP1008501	Standard Lot	44266.9
103850230	2	511	DP869746	Standard Lot	30373.1
103947449	2	1	DP784347	Standard Lot	934.3
103947461	2	4	DP878338	Standard Lot	957.7
101199801	2	1	DP1320	Standard Lot	3054.1
101199826	2	1	DP1320	Standard Lot	1696.4
104251184	2	10	DP1320	Standard Lot	1942.3
101199973	2	11	DP1320	Standard Lot	1927.3
101199946	2	12	DP1320	Standard Lot	1982.2
101199956	2	13	DP1320	Standard Lot	1690.3
101199934	2	13	DP1320	Standard Lot	1140.9
104251174	2	14	DP1320	Standard Lot	4007.4
104251175	2	15	DP1320	Standard Lot	4017.2
101199938	2	17	DP1320	Standard Lot	2146.2
101199953	2	19	DP1320	Standard Lot	2058.8
101199802	2	2	DP1320	Standard Lot	2958.5
101199963	2	20	DP1320	Standard Lot	1576.3
101199977	2	21	DP1320	Standard Lot	1998.5
101199975	2	23	DP1320	Standard Lot	3256.1
101199939	2	3	DP1320	Standard Lot	3243.0
101199828	2	3	DP1320	Standard Lot	1918.4
104251178	2	4	DP1320	Standard Lot	4332.9
104589562	2	5	DP1320	Standard Lot	5577.9
101199830	2	5	DP1320	Standard Lot	2322.2
104251189	2	6	DP1320	Standard Lot	2022.8
101199907	2	7	DP1320	Standard Lot	1913.5
104251187	2	7	DP1320	Standard Lot	1927.5
101199942	2	8	DP1320	Standard Lot	1992.8
104251186	2	8	DP1320	Standard Lot	1963.9
101199943	2	9	DP1320	Standard Lot	1907.1
104661699	2	101	DP716209	Standard Lot	405647.2
101283859	2	105	DP716209	Standard Lot	23219.2
101200745	2	4	DP250359	Standard Lot	1441.6
101200788	2	8	DP250359	Standard Lot	4232.5
101200819	2	12	DP26123	Standard Lot	819.4
101200823	2	16	DP26123	Standard Lot	812.6
101200834	2	2	DP26123	Standard Lot	776.0
101200811	2	24	DP26123	Standard Lot	809.9
101200815	2	28	DP26123	Standard Lot	827.8
101200832	2	4	DP26123	Standard Lot	819.6
101200829	2	8	DP26123	Standard Lot	2202.5

CADID	Controlling Entity	Lot No.	Plan Label	Lot Class	Area (sq m)
101200918	2	11	DP214417	Standard Lot	227.3
101200910	2	15	DP214417	Standard Lot	951.7
101200907	2	19	DP214417	Standard Lot	1955.9
101200977	2	22	DP214417	Standard Lot	949.2
101200959	2	26	DP214417	Standard Lot	973.5
101200974	2	3	DP214417	Standard Lot	1195.0
101200890	2	33	DP214417	Standard Lot	5129.8
101200935	2	37	DP214417	Standard Lot	4832.9
101200938	2	40	DP214417	Standard Lot	5431.3
101200968	2	44	DP214417	Standard Lot	1266.6
101200972	2	48	DP214417	Standard Lot	1054.5
101200915	2	8	DP214417	Standard Lot	417.5
101201001	2	38	DP817111	Standard Lot	223055.8
101201048	2	4	DP249565	Standard Lot	32100.1
103794239	2	8	DP249565	Standard Lot	15996.4
101285368	2	24	DP747041	Standard Lot	1088.7
101285613	2	28	DP747041	Standard Lot	1092.5
101285389	2	11	DP258218	Standard Lot	964.0
101285385	2	15	DP258218	Standard Lot	1028.8
101285461	2	5	DP258218	Standard Lot	966.6
104187095	2	9	DP258218	Standard Lot	987.8
101285739	2	2	DP604200	Standard Lot	970.0
104756225	2	3	DP569062	Standard Lot	14294.7
101285730	3	60	DP752012	Standard Lot	10141.7
101285762	3	75	DP752012	Standard Lot	9010.3
101285742	2	80	DP752012	Standard Lot	20410.9
101285761	2	86	DP752012	Standard Lot	2896.3
101285745	2	91	DP752012	Standard Lot	3967.5
101288825	2	1	DP506516	Standard Lot	92612.1
101199649	2	31	DP616981	Standard Lot	32520.6
101284049	2	2	DP604940	Standard Lot	9994.8
101284090	2	11	DP719933	Standard Lot	77151.7
101285550	2	117	DP776542	Standard Lot	984.9
101200954	2	C	DP32515	Standard Lot	24349.1
101659731	2	31	DP845048	Standard Lot	19149.5
101659823	2	2	DP846049	Standard Lot	1828.7
101199460	2	51	DP802886	Standard Lot	18208.7
101199643	2	32	DP616981	Standard Lot	69728.0
101284033	2	11	DP819909	Standard Lot	113245.3
101199442	2	1	DP354557	Standard Lot	2514.3
101200187	2	41	DP834627	Standard Lot	3415.8
101284205	2	C	DP162904	Standard Lot	109895.4
101199628	2	10	DP245756	Standard Lot	28812.7
104653156	2	20	DP90412	Standard Lot	2067.6
101199624	2	7	DP245756	Standard Lot	101738.3
101199772	2	7	DP250231	Standard Lot	4532.7
103823487	2	1004	DP734802	Standard Lot	17345.0
101200115	2	4	DP531900	Standard Lot	1636.1
101200166	2	61	DP825642	Standard Lot	20016.1
104268437	2	3	DP748675	Standard Lot	129796.9
101200843	2	10	DP23749	Standard Lot	4087.6
101200839	2	14	DP23749	Standard Lot	4023.0
101200849	2	4	DP23749	Standard Lot	3920.8
101200845	2	8	DP23749	Standard Lot	4146.6
101285212	2	11	DP245396	Standard Lot	101845.7

CADID	Controlling Entity	Lot No.	Plan Label	Lot Class	Area (sq m)
103824263	2	5	DP245396	Standard Lot	98598.8
101201123	2	4	DP702031	Standard Lot	3171.8
101201255	2	439	DP837794	Standard Lot	1090.0
104411348	2	1	DP432054	Standard Lot	52210.4
101283921	2	1	DP119350	Standard Lot	550035.9
101284018	2	18B	DP27206	Standard Lot	41619.1
101284122	2	22B	DP27206	Standard Lot	42139.5
101284042	2	2	DP539381	Standard Lot	20225.1
101285242	2	1	DP249446	Standard Lot	106923.7
101285359	2	1	DP774424	Standard Lot	1016.9
101285275	2	13	DP774424	Standard Lot	1017.0
101285281	2	17	DP774424	Standard Lot	969.2
101285284	2	20	DP774424	Standard Lot	993.8
101285289	2	24	DP774424	Standard Lot	1119.1
101285353	2	4	DP774424	Standard Lot	1106.7
101285347	2	8	DP774424	Standard Lot	1113.8
101285406	2	11	DP246207	Standard Lot	994.9
101285332	2	15	DP246207	Standard Lot	983.7
101285407	2	19	DP246207	Standard Lot	992.7
101285324	2	22	DP246207	Standard Lot	966.3
101285402	2	26	DP246207	Standard Lot	973.4
101285414	2	3	DP246207	Standard Lot	1196.1
104187105	2	33	DP246207	Standard Lot	1529.4
104187092	2	37	DP246207	Standard Lot	1179.5
101285477	2	40	DP246207	Standard Lot	1450.9
101285480	2	7	DP246207	Standard Lot	1412.4
101285521	2	2	DP747039	Standard Lot	52213.4
101657013	3	1	DP758022	Standard Lot	2020.1
101656953	2	11	DP758022	Standard Lot	2022.6
101656987	2	12	DP758022	Standard Lot	2049.4
101657014	2	12	DP758022	Standard Lot	2134.8
101657001	2	13	DP758022	Standard Lot	1412.3
101656966	2	15	DP758022	Standard Lot	2062.8
101656971	2	17	DP758022	Standard Lot	2016.0
101285631	2	19	DP758022	Standard Lot	2021.1
101656977	2	2	DP758022	Standard Lot	2024.3
101656956	2	20	DP758022	Standard Lot	1890.7
101656976	2	3	DP758022	Standard Lot	2057.0
101657020	2	4	DP758022	Standard Lot	2010.8
101657008	2	5	DP758022	Standard Lot	1194.1
101656992	2	6	DP758022	Standard Lot	2019.2
101656947	2	7	DP758022	Standard Lot	2057.1
101657003	2	7	DP758022	Standard Lot	1005.3
101657024	2	8	DP758022	Standard Lot	2007.8
104691216	2	9	DP758022	Standard Lot	2116.3
101199576	2	1	DP547541	Standard Lot	95411.4
101200017	2	123	DP809576	Standard Lot	521164.7
101199613	2	11	DP545240	Standard Lot	153.3
101200028	2	124	DP809576	Standard Lot	374661.6
101285624	2	19	DP583532	Standard Lot	2037.2
103833402	2	1	DP651901	Standard Lot	360.1
101200055	2	1	DP531901	Standard Lot	641.1
101285839	2	1	DP629719	Standard Lot	7788.3
101199474	2	40	DP834627	Standard Lot	7441.6
101199642	2	1	DP245756	Standard Lot	20624.0

CADID	Controlling Entity	Lot No.	Plan Label	Lot Class	Area (sq m)
101199631	2	3	DP245756	Standard Lot	20599.9
101199773	2	11	DP250231	Standard Lot	6444.9
101199778	2	6	DP250231	Standard Lot	30371.7
101199846	2	1003	DP734802	Standard Lot	20223.8
101200007	2	12	DP606991	Standard Lot	201117.1
101200056	2	7	DP531900	Standard Lot	687.7
104547050	2	2	DP748675	Standard Lot	47663.2
101200852	2	1	DP23749	Standard Lot	3975.2
101200840	2	13	DP23749	Standard Lot	4079.8
101200850	2	3	DP23749	Standard Lot	4127.9
101200846	2	7	DP23749	Standard Lot	4060.0
103824264	2	4	DP245396	Standard Lot	128630.4
101201122	2	3	DP702031	Standard Lot	10603.3
101201256	2	438	DP837794	Standard Lot	1075.6
103802498	2	52	DP864824	Standard Lot	32583.6
103857917	2	71	DP871060	Standard Lot	20620.4
101284025	2	18A	DP27206	Standard Lot	20391.0
101284116	2	22A	DP27206	Standard Lot	41651.9
101284048	2	1	DP539381	Standard Lot	20266.9
101284067	2	2	DP809891	Standard Lot	20235.7
101285231	2	5	DP249446	Standard Lot	109991.2
101285276	2	12	DP774424	Standard Lot	966.8
101285280	2	16	DP774424	Standard Lot	1076.3
101285358	2	2	DP774424	Standard Lot	996.8
101285288	2	23	DP774424	Standard Lot	1181.6
101285354	2	3	DP774424	Standard Lot	1014.9
101285350	2	7	DP774424	Standard Lot	1063.5
101285336	2	10	DP246207	Standard Lot	979.4
101285412	2	14	DP246207	Standard Lot	1110.6
101285405	2	18	DP246207	Standard Lot	1006.1
101285411	2	21	DP246207	Standard Lot	1096.7
101285328	2	25	DP246207	Standard Lot	975.9
101285321	2	29	DP246207	Standard Lot	1414.4
101285327	2	32	DP246207	Standard Lot	1343.6
104187110	2	36	DP246207	Standard Lot	1350.5
101285415	2	4	DP246207	Standard Lot	1224.0
101285418	2	6	DP246207	Standard Lot	1223.1
101285459	2		SP38785	Strata	1010.3
101657023	2	1	DP758022	Standard Lot	2012.7
101656967	2	11	DP758022	Standard Lot	2063.6
101657018	2	11	DP758022	Standard Lot	1198.1
104624004	2	12	DP758022	Standard Lot	2001.0
101656964	2	13	DP758022	Standard Lot	2024.2
101657000	2	14	DP758022	Standard Lot	1449.1
101656997	2	16	DP758022	Standard Lot	2028.4
101657002	2	18	DP758022	Standard Lot	2000.2
101657012	3	2	DP758022	Standard Lot	2026.4
101657011	3	3	DP758022	Standard Lot	2049.7
101656985	2	4	DP758022	Standard Lot	2071.0
101656991	2	5	DP758022	Standard Lot	2068.1
101656980	2	6	DP758022	Standard Lot	2007.1
104657331	2	7	DP758022	Standard Lot	1998.0
101657025	2	7	DP758022	Standard Lot	2055.8
101656994	2	8	DP758022	Standard Lot	2021.8
101656946	2	9	DP758022	Standard Lot	2012.3

CADID	Controlling Entity	Lot No.	Plan Label	Lot Class	Area (sq m)
101285896	2	500	DP834253	Standard Lot	2169.5
103874166	2	568	DP871508	Standard Lot	65618.3
103947452	2	2	DP878338	Standard Lot	956.5
104241628	2	72	DP883462	Standard Lot	54671.4
104295238	2	2	DP1004632	Standard Lot	13755.9
104331774	2	1	DP1022258	Standard Lot	26604.3
104331773	2	5	DP1022258	Standard Lot	20753.2
104557228	2	9	DP1022258	Standard Lot	1058850.3
104229333	2	2	DP734656	Standard Lot	738009.7
101199630	2	2	DP245756	Standard Lot	20253.9
101199782	2	10	DP250231	Standard Lot	3262.0
101199796	2	5	DP250231	Standard Lot	1343.8
101199889	2	1002	DP734802	Standard Lot	21695.5
101200005	2	11	DP606991	Standard Lot	199462.7
101200107	2	6	DP531900	Standard Lot	1393.8
101200413	2	6	DP744414	Standard Lot	103449.2
101200841	2	12	DP23749	Standard Lot	4187.9
101200851	2	2	DP23749	Standard Lot	4044.5
101200847	2	6	DP23749	Standard Lot	4144.9
104475488	2	3	DP245396	Standard Lot	135314.7
103824260	2	7	DP245396	Standard Lot	105340.0
101201151	2	2	DP702031	Standard Lot	73878.9
104585793	2	840	DP1049304	Standard Lot	474089.2
104609545	2	103	DP1045694	Standard Lot	1901.3
101283967	2	442	DP789541	Standard Lot	94620.6
101285852	2	100	DP555116	Standard Lot	4543.1
101199797	2	32	DP599179	Standard Lot	3073.9
101200082	2	101	DP790213	Standard Lot	745.8
101200979	2	A	DP380750	Standard Lot	100999.1
101284006	2	20	DP785113	Standard Lot	80918.3
101283885	2	101	DP842937	Standard Lot	400561.0
101283961	2	22	DP740022	Standard Lot	24353.9
101284011	2	19B	DP27206	Standard Lot	40531.3
101284142	2	23B	DP27206	Standard Lot	41089.4
101284059	2	1	DP809891	Standard Lot	40516.3
101285236	2	4	DP249446	Standard Lot	112138.1
101285278	2	11	DP774424	Standard Lot	1013.1
101285274	2	15	DP774424	Standard Lot	1048.9
101285283	2	19	DP774424	Standard Lot	1017.3
101285287	2	22	DP774424	Standard Lot	1104.3
101285357	2	26	DP774424	Standard Lot	985.1
101285351	2	6	DP774424	Standard Lot	1066.8
101285341	2	1	DP246207	Standard Lot	1200.1
101285410	2	13	DP246207	Standard Lot	993.0
101285335	2	17	DP246207	Standard Lot	986.2
101285409	2	20	DP246207	Standard Lot	1007.6
101285326	2	24	DP246207	Standard Lot	983.3
104187107	2	28	DP246207	Standard Lot	1119.1
101285325	2	31	DP246207	Standard Lot	1485.3
101285315	2	35	DP246207	Standard Lot	1002.4
101285475	2	39	DP246207	Standard Lot	1455.4
101285416	2	5	DP246207	Standard Lot	1214.5
101285337	2	9	DP246207	Standard Lot	987.1
101656982	2	1	DP758022	Standard Lot	1942.7
101657007	2	10	DP758022	Standard Lot	996.6

CADID	Controlling Entity	Lot No.	Plan Label	Lot Class	Area (sq m)
101656954	2	12	DP758022	Standard Lot	2034.2
101656988	2	13	DP758022	Standard Lot	2025.5
101656955	2	14	DP758022	Standard Lot	2008.1
101656972	2	16	DP758022	Standard Lot	2022.8
101285549	2	18	DP758022	Standard Lot	2055.5
101656961	2	19	DP758022	Standard Lot	2005.8
101657022	2	2	DP758022	Standard Lot	2039.6
101657021	2	3	DP758022	Standard Lot	2049.3
101656978	2	4	DP758022	Standard Lot	2012.7
101656979	2	5	DP758022	Standard Lot	2098.0
104703720	2	6	DP758022	Standard Lot	2003.2
101657004	3	6	DP758022	Standard Lot	2045.5
101656993	2	7	DP758022	Standard Lot	2072.9
104287411	2	8	DP758022	Standard Lot	2027.0
101656958	2	9	DP758022	Standard Lot	2036.8
101657006	2	9	DP758022	Standard Lot	1010.3
101199405	2	31	DP700133	Standard Lot	19243.7
101283956	2	315	DP785990	Standard Lot	100003.7
101199575	2	1	DP561705	Standard Lot	116477.9
101284095	2	10	DP719933	Standard Lot	20027.8
101285551	2	116	DP776542	Standard Lot	1039.3
104316841	2	61	DP853569	Standard Lot	459222.4
101199747	2	1	DP568196	Standard Lot	122060.9
101201045	2	1	DP375976	Standard Lot	48341.5
101285449	2	1	DP783229	Standard Lot	2024.9
101199409	2	2	DP244388	Standard Lot	36407.1
101199410	2	6	DP244388	Standard Lot	101098.7
101199648	2	4	DP247549	Standard Lot	21318.0
104188171	2	102	DP1321	Standard Lot	15725.0
101199657	2	12	DP1321	Standard Lot	17276.0
101199654	2	15	DP1321	Standard Lot	12412.5
101200242	2	19	DP1321	Standard Lot	7063.3
101200260	2	23	DP1321	Standard Lot	7316.3
101200251	2	27	DP1321	Standard Lot	10361.6
101200248	2	30	DP1321	Standard Lot	14695.6
101200243	2	34	DP1321	Standard Lot	18994.0
101200236	2	38	DP1321	Standard Lot	14592.3
101200239	2	41	DP1321	Standard Lot	10279.3
101200266	2	46	DP1321	Standard Lot	31764.6
101199675	2	60	DP1321	Standard Lot	47666.6
101199680	2	64	DP1321	Standard Lot	71051.4
101199662	2	1	DP810978	Standard Lot	19828.7
101199703	2	3	DP810978	Standard Lot	20347.9
101199896	2	7	DP810978	Standard Lot	21212.3
101199784	2	1	DP237935	Standard Lot	125190.5
101200065	2	A	DP314077	Standard Lot	1139.6
101200306	2	1	DP231892	Standard Lot	17017.3
101201005	2	19	DP254418	Standard Lot	806.1
101201036	2	472	DP805046	Standard Lot	19771.7
103786296	2	102	DP862676	Standard Lot	47330.6
104187083	2	10	DP235130	Standard Lot	1550.6
101285317	2	14	DP235130	Standard Lot	1184.9
101285269	2	18	DP235130	Standard Lot	1110.5
101285258	2	21	DP235130	Standard Lot	1477.0
101285310	2	4	DP235130	Standard Lot	1406.9

CADID	Controlling Entity	Lot No.	Plan Label	Lot Class	Area (sq m)
101285320	2	8	DP235130	Standard Lot	1496.6
101285765	2	20	DP818367	Standard Lot	5788.0
101285813	2	3	DP87980	Standard Part Lot	251535.5
101200169	2	1	DP550689	Standard Lot	48611.4
103787515	2	45	DP862996	Standard Lot	12951.9
104173019	2	2	DP1008500	Standard Lot	70008.2
101201108	2	21	DP740080	Standard Lot	21197.7
101199458	2	42	DP834627	Standard Lot	695201.7
104474809	2	1	DP734656	Standard Lot	951112.3
101199629	2	11	DP245756	Standard Lot	20721.0
101199774	2	4	DP250231	Standard Lot	7864.0
101199890	2	1001	DP734802	Standard Lot	12523.8
101199894	2	1	DP740120	Standard Lot	27231.5
101200109	2	5	DP531900	Standard Lot	696.7
104241636	2	62	DP825642	Standard Lot	81366.6
101200419	2	5	DP744414	Standard Lot	102583.6
101200842	2	11	DP23749	Standard Lot	3834.1
101200838	2	15	DP23749	Standard Lot	3991.4
101200848	2	5	DP23749	Standard Lot	4096.4
101200844	2	9	DP23749	Standard Lot	3990.2
101285193	2	12	DP245396	Standard Lot	103612.1
103824262	2	6	DP245396	Standard Lot	102028.9
101201158	2	1	DP702031	Standard Lot	9018.5
101201254	2	440	DP837794	Standard Lot	1262.9
101285241	2	3	DP249446	Standard Lot	20284.0
101285345	2	10	DP774424	Standard Lot	1139.8
101285272	2	14	DP774424	Standard Lot	1225.2
101285282	2	18	DP774424	Standard Lot	1034.6
101285286	2	21	DP774424	Standard Lot	1008.1
101285356	2	25	DP774424	Standard Lot	1204.8
101285352	2	5	DP774424	Standard Lot	1108.8
101285346	2	9	DP774424	Standard Lot	990.9
101285408	2	12	DP246207	Standard Lot	981.8
101285334	2	16	DP246207	Standard Lot	992.8
101285343	2	2	DP246207	Standard Lot	1219.3
101285323	2	23	DP246207	Standard Lot	964.5
101285403	2	27	DP246207	Standard Lot	967.8
101285322	2	30	DP246207	Standard Lot	1382.2
101285270	2	34	DP246207	Standard Lot	998.0
104187109	2	38	DP246207	Standard Lot	1181.1
101285476	2	41	DP246207	Standard Lot	1056.6
101285338	2	8	DP246207	Standard Lot	976.6
101285557	2	9	DP758022	Standard Part Lot	80.8
101657017	2	10	DP758022	Standard Lot	1197.4
104287416	2	11	DP758022	Standard Lot	2081.7
101656963	2	12	DP758022	Standard Lot	2046.3
101657019	2	12	DP758022	Standard Lot	1210.1
101656965	2	14	DP758022	Standard Lot	1963.0
101656999	2	15	DP758022	Standard Lot	1455.8
101656998	2	17	DP758022	Standard Lot	2032.5
101656957	2	19	DP758022	Standard Lot	1994.2
101656983	2	2	DP758022	Standard Lot	2052.2
101656986	2	20	DP758022	Standard Lot	1963.5
101656984	2	3	DP758022	Standard Lot	2014.3
104703721	2	4	DP758022	Standard Lot	2061.1

CADID	Controlling Entity	Lot No.	Plan Label	Lot Class	Area (sq m)
101657010	3	4	DP758022	Standard Lot	2026.8
101657009	3	5	DP758022	Standard Lot	2015.1
101657026	2	6	DP758022	Standard Lot	2032.3
101656981	2	7	DP758022	Standard Lot	1945.7
101656968	2	8	DP758022	Standard Lot	2063.1
101657005	2	8	DP758022	Standard Lot	1009.5
101657016	2	9	DP758022	Standard Lot	1228.0
101283964	2	21	DP740022	Standard Lot	96910.4
101284014	2	19A	DP27206	Standard Lot	40861.7
101284130	2	23A	DP27206	Standard Lot	55908.6
101284037	2	3	DP539381	Standard Lot	60379.5
104188172	2	10	DP1009759	Standard Lot	9324.8
103802499	2	51	DP864824	Standard Lot	33023.8
104331767	2	3	DP1022258	Standard Lot	27846.9
104331777	2	7	DP1022258	Standard Lot	21206.3
104609544	2	101	DP1045694	Standard Lot	145.0
104188175	2	9	DP1009759	Standard Lot	2855.3
104295239	2	1	DP1004632	Standard Lot	10305.5
104331771	2	4	DP1022258	Standard Lot	20200.8
104331776	2	8	DP1022258	Standard Lot	21198.3
101284218	2	7	DP706695	Standard Lot	26190.3
101285922	2	2	DP808006	Standard Lot	19908.0
101199594	2	1	DP553771	Standard Lot	4081.1
101200020	2	2	DP572954	Standard Lot	409167.6
101199818	2	31	DP599179	Standard Lot	3767.7
101200083	2	100	DP790213	Standard Lot	4195.6
103920422	2	1	DP877127	Standard Lot	23724.9
101253767	2	1	DP249393	Standard Lot	393346.4
101284215	2	8	DP706695	Standard Lot	717.1
101285921	2	3	DP808006	Standard Lot	19962.5
101200921	2	3	DP829218	Standard Lot	282415.2
101200098	2	A	DP940830	Standard Lot	559.7
101285807	2	1	DP554953	Standard Lot	116522.4
104541987	2	1	DP703068	Standard Lot	19984.7
101284054	2	1	DP916410	Standard Lot	20357.5
104657333	2	1	DP227868	Standard Lot	16356.5
103920421	2	2	DP877127	Standard Lot	77328.6
101285808	2	2	DP554953	Standard Lot	107395.4
101285566	2	1	DP197719	Standard Lot	1965.7
104117789	2	2	DP1001897	Standard Lot	19797.4
101200928	2	21	DP254418	Standard Lot	5946.0
101199382	2	4	DP244388	Standard Lot	39834.6
104244301	2	92	DP804970	Standard Lot	148861.2
104542010	2	3	DP721499	Standard Lot	1632.7
101199726	2	1	DP247549	Standard Lot	40428.2
101199854	2	104	DP1321	Standard Lot	18754.7
101199652	2	13	DP1321	Standard Lot	16126.4
101200258	2	21	DP1321	Standard Lot	8621.7
101200253	2	25	DP1321	Standard Lot	10725.3
101200249	2	29	DP1321	Standard Lot	14613.9
101200246	2	32	DP1321	Standard Lot	14671.2
101199670	2	4	DP1321	Standard Lot	4084.7
101200241	2	43	DP1321	Standard Lot	10227.3
101200256	2	50	DP1321	Standard Lot	55507.0
101199677	2	59	DP1321	Standard Lot	43463.1

CADID	Controlling Entity	Lot No.	Plan Label	Lot Class	Area (sq m)
101199658	2	62	DP1321	Standard Lot	84303.5
101199666	2	8	DP1321	Standard Lot	13444.9
101199679	2	11	DP810978	Standard Lot	20423.3
101199700	2	5	DP810978	Standard Lot	39060.5
101199891	2	9	DP810978	Standard Lot	21577.6
101199996	2	3	DP237935	Standard Lot	20736.3
101285250	2	201	DP749272	Standard Lot	365177.0
101285319	2	12	DP235130	Standard Lot	974.3
101285312	2	16	DP235130	Standard Lot	1090.9
101285302	2	2	DP235130	Standard Lot	2401.6
101285263	2	23	DP235130	Standard Lot	1079.1
101285313	2	6	DP235130	Standard Lot	1214.5
101285545	2	1	DP563025	Standard Lot	1017.0
101285801	2	1	DP87980	Standard Part Lot	39212.6
104287419	2	1	DP1017866	Standard Lot	1311.6
104399255	2	80	DP587563	Standard Lot	158527.9
101199599	2	100	DP773131	Standard Lot	32381.0
101199997	2	1	DP601444	Standard Lot	13971.0
101200272	2	21	DP829001	Standard Lot	76767.4
101200758	2	42	DP634285	Standard Lot	5510.8
101285235	2	2	DP249286	Standard Lot	103640.6
103457601	2	32	DP835406	Standard Lot	6708.2
104701995	2	60	DP1064019	Standard Lot	106900.8
101284201	2	1	DP547295	Standard Lot	104138.6
101199471	2	226	DP793780	Standard Lot	110549.9
104331770	2	2	DP1022258	Standard Lot	28763.4
104331768	2	6	DP1022258	Standard Lot	21749.7
101195283	2	6	DP666919	Standard Lot	587.3
101199964	2		SP38736	Strata	4160.1
104585791	2	841	DP1049304	Standard Lot	240682.3
101200024	2	1	DP572954	Standard Lot	19749.8
101201015	2	B	DP380750	Standard Lot	28751.9
101284210	2	5	DP706695	Standard Lot	80109.4
101285918	2	1	DP808006	Standard Lot	19585.2
101638712	2	21	DP785113	Standard Lot	20227.2
101199408	2	1	DP244388	Standard Lot	32144.7
101199383	2	5	DP244388	Standard Lot	40563.7
101199511	2	4	DP721499	Standard Lot	1390.5
101199650	2	2	DP247549	Standard Lot	20263.4
101199664	2	10	DP1321	Standard Lot	12516.0
101199663	2	11	DP1321	Standard Lot	15485.8
101199653	2	14	DP1321	Standard Lot	16154.8
101200268	2	22	DP1321	Standard Lot	6377.7
101200252	2	26	DP1321	Standard Lot	10337.2
101199671	2	3	DP1321	Standard Lot	4013.6
101200245	2	33	DP1321	Standard Lot	19022.8
101200238	2	40	DP1321	Standard Lot	14547.6
101201068	2	45	DP1321	Standard Lot	29846.8
101200254	2	51	DP1321	Standard Lot	45903.0
101199668	2	6	DP1321	Standard Lot	5000.4
101199674	2	63	DP1321	Standard Lot	73589.9
101199665	2	9	DP1321	Standard Lot	13074.7
101199702	2	2	DP810978	Standard Lot	20327.0
101199990	2	6	DP810978	Standard Lot	26370.6
101199810	2	18	DP652051	Standard Lot	1800.1

CADID	Controlling Entity	Lot No.	Plan Label	Lot Class	Area (sq m)
101199999	2	5	DP237935	Standard Lot	20402.8
101200300	2	19	DP249938	Standard Lot	101962.3
101201033	2	471	DP805046	Standard Lot	88765.2
101285300	2	1	DP235130	Standard Lot	1126.8
101285318	2	13	DP235130	Standard Lot	1124.7
101285307	2	17	DP235130	Standard Lot	1079.2
101285267	2	20	DP235130	Standard Lot	998.1
101285309	2	3	DP235130	Standard Lot	1018.7
101285314	2	7	DP235130	Standard Lot	1166.9
101285543	2	2	DP563025	Standard Lot	1002.0
101285806	2	2	DP87980	Standard Part Lot	7405.4
104557226	2	32	DP700133	Standard Lot	81869.9
101199780	2	23	DP655540	Standard Lot	52660.1
101201113	2	3	DP227789	Standard Lot	225833.7
101285892	2	2	DP598534	Standard Lot	8798.5
103947448	2	1	DP193968	Standard Lot	1050.6
101199430	2	3	DP244388	Standard Lot	44691.1
104244298	2	91	DP804970	Standard Lot	12029.5
101199728	2	7	DP247549	Standard Lot	101414.6
101199853	2	103	DP1321	Standard Lot	18212.7
101199645	2	129	DP1321	Standard Lot	91946.3
101199655	2	16	DP1321	Standard Lot	12500.2
101200259	2	20	DP1321	Standard Lot	7776.0
101200267	2	24	DP1321	Standard Lot	8337.3
101200250	2	28	DP1321	Standard Lot	10280.6
101200247	2	31	DP1321	Standard Lot	14562.5
101200237	2	39	DP1321	Standard Lot	14654.0
101200240	2	42	DP1321	Standard Lot	10332.6
101199669	2	5	DP1321	Standard Lot	5075.0
101199660	2	58	DP1321	Standard Lot	34246.2
101199676	2	61	DP1321	Standard Lot	83301.8
101199667	2	7	DP1321	Standard Lot	13684.3
101199992	2	10	DP810978	Standard Lot	21744.8
101199701	2	4	DP810978	Standard Lot	25799.5
101199993	2	8	DP810978	Standard Lot	20478.7
101199995	2	2	DP237935	Standard Lot	22352.4
101200064	2	B	DP314077	Standard Lot	1161.0
101200275	2	2	DP231892	Standard Lot	468912.6
101201006	2	20	DP254418	Standard Lot	418.1
104187278	2	1	DP546446	Standard Lot	152205.9
101285209	2	1	DP986672	Standard Lot	221105.9
104187086	2	11	DP235130	Standard Lot	1478.5
101285316	2	15	DP235130	Standard Lot	1044.2
101285268	2	19	DP235130	Standard Lot	1009.8
101285261	2	22	DP235130	Standard Lot	1153.2
101285311	2	5	DP235130	Standard Lot	1154.9
101285394	2	9	DP235130	Standard Lot	1422.1
101285766	2	21	DP818367	Standard Lot	5119.5
104117788	2	1	DP1001897	Standard Lot	19982.0
103749953	2	331	DP858998	Standard Lot	1050.0
104381101	2	154	DP1030736	Standard Lot	20349.1
104557179	2	141	DP1047387	Standard Lot	1037.2
101285229	2	1	DP249286	Standard Lot	112872.6
101199815	2	B	DP418373	Standard Lot	4150.3
101200262	2	2	DP580786	Standard Lot	6777.6

CADID	Controlling Entity	Lot No.	Plan Label	Lot Class	Area (sq m)
101200780	2	41	DP634285	Standard Lot	6661.4
104381104	2	153	DP1030736	Standard Lot	199291.2
101285697	2	31	DP835406	Standard Lot	6734.1
101200773	2	2	DP554174	Standard Lot	15316.7
104703717	2	51	DP1064402	Standard Lot	1034.2
101285211	2	4	DP249286	Standard Lot	106692.7
101289031	2	102	DP597946	Standard Lot	1086.1
101199788	2	A	DP418373	Standard Lot	5829.9
101200261	2	1	DP580786	Standard Lot	58160.0
101200418	2	5	DP836296	Standard Lot	20811.8
101283971	2	1	DP119341	Standard Lot	68533.1
101285380	2	204	DP716345	Standard Lot	1834.7
101200023	2	181	DP618217	Standard Lot	21438.3
104661694	2	1	DP708762	Standard Lot	2477.4
101283908	2	2	DP629720	Standard Lot	832312.4
104287418	2	2	DP1017866	Standard Lot	1690.6
101199420	2	81	DP587563	Standard Lot	4196.1
104703718	2	50	DP1064402	Standard Lot	1004.0
101285233	2	3	DP249286	Standard Lot	105539.7
101199616	2	1	DP100359	Standard Lot	1054.0
101199998	2	2	DP601444	Standard Lot	6201.1
101200301	2	22	DP829001	Standard Lot	115618.3
103457600	2	33	DP835406	Standard Lot	482.5
104701997	2	61	DP1064019	Standard Lot	12788.2
101285379	2	203	DP716345	Standard Lot	1828.3
101199804	2	15	DP652820	Standard Lot	1393.2
104149431	2	1	DP1006964	Standard Lot	2904.5
104170542	2	20	DP1006935	Standard Lot	1508.2
101200006	2	21	DP584610	Standard Lot	55916.8
104557182	2	1	DP783735	Standard Lot	2157.7
100047716	2	543	DP746323	Standard Lot	60490.0
100047743	2	25	DP8738	Standard Lot	71156.5
100047770	2	202	DP590247	Standard Lot	1416827.5
100047799	2	16	DP746335	Standard Lot	30679.5
100047707	2	36	DP1321	Standard Lot	18933.5
100047756	2	1	DP801846	Standard Lot	1836.4
100047712	2	41	DP599379	Standard Lot	91766.5
100047739	2	15	DP1320	Standard Lot	5499.1
100047763	2	4	DP248044	Standard Lot	101972.6
100047794	2	3	DP719962	Standard Lot	99984.2
100051750	2	41	DP816859	Standard Lot	106463.6
100051874	2	108	DP264639	Standard Lot	280564.9
100051901	2	12	DP736121	Standard Lot	134309.7
100051768	3	65	DP257529	Standard Lot	307891.3
100047727	2	1	DP231728	Standard Lot	306561.8
100047750	2	3	DP801846	Standard Lot	1993.2
100047674	2	9	DP776139	Standard Lot	1467346.0
100051746	2	2	DP616327	Standard Lot	83049.8
100051763	2	4	DP253658	Standard Lot	101856.1
100051737	2	10	DP744101	Standard Lot	318854.5
100051881	2	147	DP751301	Standard Lot	162113.8
100051754	2	14	DP752012	Standard Part Lot	5620.7
100197062	2	B	DP32515	Standard Lot	157487.7
100204669	2	2	DP249393	Standard Lot	49422.2
100203745	9	33	DP752066	Standard Lot	198285.4

CADID	Controlling Entity	Lot No.	Plan Label	Lot Class	Area (sq m)
100209593	3	7003	DP93029	Standard Lot	104657.7
104117787	4	3	DP1001897	Standard Lot	813918.8
104251193	2	1	DP1320	Standard Lot	1948.6
104289622	2	5	DP825014	Standard Lot	391267.7
104351308	3	64	DP40264	Standard Lot	1024799.2
104609547	2	100	DP1045694	Standard Lot	3008282.5
104633574	9	23	DP752054	Standard Part Lot	693380.2
104701996	2	1	DP719962	Standard Lot	52265.2
100047713	2	2	DP532076	Standard Lot	23596.5
100047740	2	7	DP249565	Standard Lot	69713.4
100051747	2	5	DP239247	Standard Lot	157674.1
100051764	2	D	DP162904	Standard Lot	199012.6
100046420	2	233	DP619005	Standard Lot	133051.4
100047675	2	23	DP740080	Standard Lot	766132.7
100047753	2	16	DP1320	Standard Lot	2014.8
100047728	2	2	DP248044	Standard Lot	101779.3
100047717	2	53	DP1321	Standard Lot	81149.2
100047669	2	42	DP599379	Standard Lot	20153.7
100047772	2	203	DP590247	Standard Lot	1553074.9
100046496	2	46	DP5152	Standard Lot	67828.7
100047744	2	24	DP8738	Standard Part Lot	57831.7
100047803	2	1	DP830740	Standard Lot	576323.6
100047708	2	37	DP1321	Standard Lot	14609.2
100047733	2	2	DP567913	Standard Lot	260027.8
100047757	2	2	DP801846	Standard Lot	1864.3
100051755	2	1	DP518975	Standard Lot	20579.6
100051751	2	21	DP816862	Standard Lot	108261.2
100051876	2	128	DP751301	Standard Lot	212700.3
100052285	2	7010	DP1031037	Standard Lot	311450.1
100051741	2	3	DP595956	Standard Lot	61548.3
100051760	2	5	DP629715	Standard Lot	31553.7
100105698	2	3	DP237433	Standard Lot	31461.0
100197063	2	3	DP309188	Standard Lot	96466.0
104117784	2	1	DP703536	Standard Lot	421994.0
100202460	2	2	DP865892	Standard Lot	62273.0
104289616	2	1	DP128462	Standard Lot	227331.0
104289623	2	9	DP123069	Standard Lot	395264.9
104661689	2	1	DP70208	Standard Lot	1563235.1
104722940	2	1	DP1067320	Standard Lot	4107539.1
104475478	2	7	DP816863	Standard Lot	132014.9
104609549	2	102	DP1045694	Standard Lot	2600.8
100047714	2	1	DP1321	Standard Lot	51560.3
100047741	2	132	DP788046	Standard Lot	3094.0
100047796	2	10	DP245396	Standard Lot	103882.3
100051766	2	8	DP789794	Standard Lot	159281.3
100047705	2	1	DP511603	Standard Lot	17176.8
100047729	2	3	DP248044	Standard Lot	101437.8
100051756	2	1	DP253658	Standard Lot	100171.7
100047725	2	2	DP248225	Standard Lot	135658.2
100047747	2	1	DP1320	Standard Lot	2011.3
100047773	2	201	DP590247	Standard Lot	349750.3
100048611	2	7	DP787284	Standard Lot	234429.6
100051807	9	65	DP752027	Standard Lot	181149.0
100051752	2	40	DP740878	Standard Lot	20645.5
100052286	9	50	DP752066	Standard Lot	200458.2

CADID	Controlling Entity	Lot No.	Plan Label	Lot Class	Area (sq m)
100047709	2	17	DP1321	Standard Lot	12497.6
100047734	2	1	DP250231	Standard Lot	76634.5
100051742	2	1	DP595956	Standard Lot	360681.3
100051761	2	2	DP253658	Standard Lot	102343.8
104117785	2	2	DP730798	Standard Lot	356847.3
104418549	3	7017	DP1035120	Standard Lot	31611.1
100197060	2	50	DP736081	Standard Lot	13239.2
100203743	9	52	DP752066	Standard Lot	99350.8
100205798	2	510	DP869746	Standard Lot	28876.1
104340908	2	48	DP752054	Standard Lot	180106.3
100212474	2	231	DP878835	Standard Lot	25297.6
104475481	2	12	DP744101	Standard Lot	259507.5
100047711	2	1	DP532076	Standard Lot	20628.4
100047737	2	2	DP250231	Standard Lot	26776.8
100047762	2	5	DP248044	Standard Lot	103052.9
100051762	2	3	DP253658	Standard Lot	101012.9
100047730	2	1	DP248044	Standard Lot	102536.8
100047683	2	1	DP730798	Standard Lot	31743.2
100046422	2	6	DP242871	Standard Lot	100463.5
100047706	2	35	DP1321	Standard Lot	18958.2
100051732	2	2	DP625921	Standard Lot	315209.8
100047726	2	3	DP248225	Standard Lot	164876.8
100047774	2	21	DP581462	Standard Lot	104620.0
100051753	2	2	DP237433	Standard Lot	25229.2
100051880	3	131	DP751301	Standard Lot	160556.0
100052287	9	53	DP752066	Standard Lot	79528.7
100047666	2	3	DP225273	Standard Lot	134835.3
100047742	2	131	DP788046	Standard Lot	1570.4
100047715	2	18	DP1321	Standard Lot	12448.0
100047798	2	15	DP746335	Standard Lot	22054.5
100051749	2	1	DP616327	Standard Lot	74966.6
100203739	9	51	DP752066	Standard Lot	203944.7
104225660	2	1	DP802151	Standard Lot	614747.8
100195602	2	41	DP751291	Standard Lot	159969.1
100196704	3	117	DP751301	Standard Lot	320757.3
100197061	2	390	DP800151	Standard Lot	92547.0
104289620	2	303	DP623982	Standard Lot	119373.7
100211430	3	69	DP821303	Standard Lot	402549.7
104148143	2	21	DP1005909	Standard Lot	45053.5
104225262	2	1	DP825014	Standard Lot	439743.6
104117786	4	4	DP1001897	Standard Lot	313211.6
104475494	2	2	DP825014	Standard Lot	302717.6
104679632	2	13	DP736121	Standard Lot	33507.3
108056449	2	1	DP816861	Standard Lot	578614.4
108038165	2	2	DP747563	Standard Lot	507356.4
108048787	2	6	DP242606	Standard Lot	102692.5
108048784	2	1	DP910752	Standard Part Lo	27745.0
108059679	2	11	DP249218	Standard Lot	360274.3
108035265	2	1	DP986715	Standard Lot	15597.8
108048786	2	3	DP242606	Standard Lot	101460.3
108038215	2	11	DP736121	Standard Lot	941869.9
108048495	2	3	DP597781	Standard Lot	830742.1
108038214	2	10	DP736121	Standard Lot	163565.6
108038212	2	2	DP522044	Standard Lot	586756.2
108059682	2	3	DP239247	Standard Lot	181035.6

CADID	Controlling Entity	Lot No.	Plan Label	Lot Class	Area (sq m)
108069750	2	3	DP236059	Standard Lot	482019.8
108059681	2	2	DP239247	Standard Lot	173314.3
108087228	2	101	DP877036	Standard Lot	362000.6
108132279	2	8	DP245396	Standard Lot	109149.6
108107211	2	102	DP1045369	Standard Lot	2087097.0
108118468	2	1	DP910751	Standard Lot	45709.0
108142276	2	31	DP864032	Standard Lot	436257.8
108080591	9	39	DP752054	Standard Lot	44150.0
108128585	2	1	DP532903	Standard Lot	2073.9
108111701	2	2	DP702024	Standard Lot	6246591.9
108121670	2	37	DP817111	Standard Lot	160862.8
108069775	2	55	DP752066	Standard Lot	44609.8
108111746	9	7	DP255282	Standard Lot	370436.4
108069741	2	232	DP619005	Standard Lot	184447.9
108091106	2	106	DP752042	Standard Lot	5179.2
108148417	2	1	DP1046069	Standard Lot	97006.1
108106390	2	1	DP285583	Standard Lot	372428.7
108069749	2	2	DP236059	Standard Lot	493981.6
108121801	2	203	DP819476	Standard Lot	356175.9
108148418	2	2	DP1046069	Standard Lot	152570.8
108121796	2	28	DP752012	Standard Lot	403437.4
108101345	2	106	DP249189	Standard Lot	67175.6
108142256	2	1	DP830604	Standard Lot	69525355.7
108087227	2	52	DP740992	Standard Lot	75308.8
108121799	2	45	DP752012	Standard Lot	305335.4
108111745	9	1	DP255282	Standard Lot	911008.6
108076511	2	100	DP1044864	Standard Lot	801696.7
108121668	2	103	DP716209	Standard Lot	1659692.8
108101344	2	105	DP249189	Standard Lot	772080.6
108076907	2	304	DP623982	Standard Lot	115436.2
108121798	2	44	DP752012	Standard Lot	237005.8
108101422	9	169	DP751301	Standard Lot	106284.8
108080592	9	55	DP752054	Standard Lot	292494.2
108080593	9	85	DP752054	Standard Lot	270692.1
108149153	2	62	DP1064019	Standard Lot	548894.9
108091111	2	3	DP804375	Standard Lot	367695.7
108121795	2	26	DP752012	Standard Lot	850759.8
108121794	2	3	DP209779	Standard Lot	2566.3
108132278	2	40	DP665249	Standard Lot	124134.4
108121800	3	84	DP752012	Standard Lot	10884.7
108101421	3	132	DP751301	Standard Lot	164643.0
108132310	2	2	DP807555	Standard Lot	5646599.0
108134641	2	1	DP610116	Standard Lot	157718650.0
108142277	2	32	DP864032	Standard Lot	217471.6
108065793	2	1	DP130288	Standard Lot	4423688.7
108086931	2	50	DP1045297	Standard Lot	428103.4
108121667	2	2	DP719962	Standard Lot	80568.8
108138816	2	1	DP605597	Standard Lot	848.8
108091088	2	101	DP804424	Standard Lot	401910.0
108091110	2	1	DP38563	Standard Lot	102398.9
108097039	2	11	DP1013745	Standard Lot	1053250.1
108101427	2	2	DP248632	Standard Lot	1128970.8
108111742	2	24	DP818437	Standard Lot	2695036.8
108076517	2	1	DP818975	Standard Lot	598265.8
108132280	2	9	DP245396	Standard Lot	109836.3

CADID	Controlling Entity	Lot No.	Plan Label	Lot Class	Area (sq m)
108121797	2	43	DP752012	Standard Lot	703426.6
145054400	2	211	DP1068913	Standard Lot	40384.7
145054401	2	210	DP1068913	Standard Lot	39696.9
150002042	2	10	DP1077544	Standard Lot	44728.1
150002043	2	11	DP1077544	Standard Lot	44686.5
150115287	2	322	DP1074529	Standard Lot	1162.6
150115288	2	321	DP1074529	Standard Lot	1782.9
150260347	2	192	DP1075346	Standard Lot	83397.6
150260351	2	191	DP1075346	Standard Lot	21014.7
150279116	2	110	DP1079081	Standard Lot	1000.7
150279117	2	111	DP1079081	Standard Lot	1012.0
150296113	2	12	DP1080332	Standard Lot	1177.0
150296114	2	13	DP1080332	Standard Lot	1359.8
150293239	2	3	DP1077427	Standard Lot	162725.4
150293240	2	2	DP1077427	Standard Lot	33448.7
150293241	2	1	DP1077427	Standard Lot	32214.0
150503019	2	11	DP1068393	Standard Lot	5456097.6
150503020	2	10	DP1068393	Standard Lot	56873.2
150485807	2	900	DP1072947	Standard Lot	277515.2
150548121	2	1	DP1081619	Standard Lot	20175.9
150548122	2	2	DP1081619	Standard Lot	100252.3
150560065	2	A	DP187145	Standard Lot	1676.1
151530269	2	6001	DP1077301	Standard Lot	505711.4
152328670	2	51	DP1090553	Standard Lot	48204.7
152328675	2	52	DP1090553	Standard Lot	128707.8
1523272868	2	100	DP1091955	Standard Lot	1726.7
1523272869	2	102	DP1091955	Standard Lot	985.9
1523272870	2	101	DP1091955	Standard Lot	3351.2
152576974	2	8	DP1082237	Standard Lot	141541.1
152576977	2	9	DP1082237	Standard Lot	138994.9
152576985	2	7	DP1082237	Standard Lot	375534.8
152584808	2	30	DP1089998	Standard Lot	8051.7
152584809	2	31	DP1089998	Standard Lot	3800.5
152584810	2	32	DP1089998	Standard Lot	2371.3
152584811	2	33	DP1089998	Standard Lot	2346.1
153090540	2	101	DP1093666	Standard Lot	75185.7
153090542	2	102	DP1093666	Standard Lot	565578.7
153329141	2	10	DP1096901	Standard Lot	178427.0
153329143	2	13	DP1096901	Standard Lot	159954.9
153329144	2	11	DP1096901	Standard Lot	160714.4
153329145	2	12	DP1096901	Standard Lot	161739.5
153476417	2	1	DP1098118	Standard Lot	2018.8
153476418	2	2	DP1098118	Standard Lot	1275.9
153476419	2	3	DP1098118	Standard Lot	114.6
153390783	2	1	DP1098558	Standard Lot	1602.7
154056029	2	190	DP1101066	Standard Lot	1082.2
153924608	2	25	DP1101016	Standard Lot	376316.7
153924609	2	24	DP1101016	Standard Lot	966992.5
153924610	2	23	DP1101016	Standard Lot	1302091.8
155960347	2	1	DP1099896	Standard Lot	2053.1
155889302	2	1	DP1101129	Standard Lot	341256.0
155892141	2	6	DP1102511	Standard Lot	10326.5
156024767	2	802	DP1103969	Standard Lot	36951.8
156024768	2	804	DP1103969	Standard Lot	35484.1
156024769	2	803	DP1103969	Standard Lot	39863.2

CADID	Controlling Entity	Lot No.	Plan Label	Lot Class	Area (sq m)
156024770	2	801	DP1103969	Standard Lot	23598.5
156024771	2	805	DP1103969	Standard Lot	19804.0
156024772	2	806	DP1103969	Standard Lot	35197.5
156006553	2	56	DP1104221	Standard Lot	20403.8
156006572	2	55	DP1104221	Standard Lot	82186.3
156007938	2		SP77884	Strata	4907.5
156008672	2	102	DP1105014	Standard Lot	44879.0
156008673	2	101	DP1105014	Standard Lot	56378.4
156010675	2	1	DP1104562	Standard Lot	2011.7
156010676	2	2	DP1104562	Standard Lot	2020.9
156703933	2	3	DP1108783	Standard Lot	725.7
156703934	2	2	DP1108783	Standard Lot	2126.9
156703935	2	1	DP1108783	Standard Lot	10404.7
156748251	2	15	DP5152	Standard Lot	4053.7
156748252	2	19	DP1103336	Standard Lot	71688.2
156748253	2	16	DP5152	Standard Lot	3988.2
157885951	2	3	DP1113069	Standard Lot	403469.9
157809230	2	101	DP1112297	Standard Lot	1335.9
157809231	2	102	DP1112297	Standard Lot	4708.6
158224206	2	2	DP1113072	Standard Lot	289868.5
158987240	2	2	DP1085929	Standard Lot	10703.5
158987241	2	1	DP1085929	Standard Lot	157433.4
158987242	2	5	DP1085929	Standard Lot	40882.2
158987243	2	9	DP1085929	Standard Lot	2748.1
158987244	2	8	DP1085929	Standard Lot	4237.9
158987245	2	7	DP1085929	Standard Lot	9007.0
158987246	2	10	DP1085929	Standard Lot	81624.8
158987247	2	6	DP1085929	Standard Lot	1215772.1
158987248	2	4	DP1085929	Standard Lot	27210.5
158987249	2	3	DP1085929	Standard Lot	141782.7
158908110	2	14	DP1092321	Standard Lot	445853372.3
159164539	3	7005	DP1117966	Standard Lot	68571.4
159172829	2	1512	DP1117924	Standard Lot	21989.7
159172830	2	1511	DP1117924	Standard Lot	58665.8
159326228	2	12	DP1118399	Standard Lot	29482.3
159326229	2	11	DP1118399	Standard Lot	384093.3
159419707	2	2374	DP1120421	Standard Lot	53730.0
159607789	2	1241	DP1121129	Standard Lot	36441.2
159607790	2	1242	DP1121129	Standard Lot	994417.5
160141871	2	100	DP1123720	Standard Lot	970.0
160122817	2	1283	DP1115045	Standard Lot	576.8
160122818	2	1282	DP1115045	Standard Lot	2632.1
160122819	2	1281	DP1115045	Standard Lot	20209.4
160149173	2	1	DP280010	Standard Lot	38636.9
160149383	2	90	DP280010	Standard Lot	119410.8
160497712	2	1	DP1126264	Standard Lot	16248.1
160902742	2	212	DP1128251	Standard Lot	19687.3
160902743	2	211	DP1128251	Standard Lot	50852.9
160579053	2	300	DP1123360	Standard Lot	119204.7
160710188	2	200	DP1127219	Standard Lot	2554.1
160772526	2	207	DP1104390	Standard Lot	313261.9
160772527	2	211	DP1104390	Standard Lot	159.6
160772528	2	200	DP1104390	Standard Lot	371488.9
160772529	2	208	DP1104390	Standard Lot	92572.5
160772530	2	205	DP1104390	Standard Lot	199234.7

CADID	Controlling Entity	Lot No.	Plan Label	Lot Class	Area (sq m)
160772531	2	206	DP1104390	Standard Lot	264669.3
160772532	2	210	DP1104390	Standard Lot	194.6
160772533	2	203	DP1104390	Standard Lot	3750.7
160772534	2	209	DP1104390	Standard Lot	5529.2
160772535	2	201	DP1104390	Standard Lot	2819568.6
160959869	2	25	DP1129591	Standard Lot	240618.8
160959870	2	24	DP1129591	Standard Lot	244060.1
160960902	2	1	DP1128013	Standard Lot	1125143.6
161006480	11	1	DP431695	Standard Lot	1240.0
161128944	2	21	DP1129150	Standard Lot	1563.3
161128945	2	22	DP1129150	Standard Lot	374087.5
161084289	2	9	DP1127449	Standard Lot	887945.4
161084290	2	8	DP1127449	Standard Lot	1527937.0
161091949	2	1	DP1126573	Standard Lot	20817.0
161091950	2	2	DP1126573	Standard Lot	23692.5
161091951	2	3	DP1126573	Standard Lot	20870.6
161091952	2	4	DP1126573	Standard Lot	21097.5
161091953	2	5	DP1126573	Standard Lot	21853.1
161091954	2	9	DP1126573	Standard Lot	182910.6
161091955	2	6	DP1126573	Standard Lot	22511.4
161091956	2	7	DP1126573	Standard Lot	24319.5
161091957	2	8	DP1126573	Standard Lot	20611.4
161174493	2	1	DP1041061	Standard Lot	505418.4
161174494	2	2	DP1041061	Standard Lot	714654.1
161174495	2	4	DP1041061	Standard Lot	211346.8
161174496	2	3	DP1041061	Standard Lot	405846.9
161461415	3	1	DP617607	Standard Lot	370.8
161454664	2	102	DP1108927	Standard Lot	7184.5
161454665	2	103	DP1108927	Standard Lot	124060.7

CADID	Date Modified	Crown Lands	Class	Area (sq m)
108592116	19/08/1998	1	Crown Road	5936.7
108639450	17/09/2008	1	Crown Road	57232.3
108592144	17/05/2007	1	Crown Parcel	15060.6
108578627	10/11/2006	1	Crown Road	625.7
108592143	25/10/2007	1	Crown Parcel	68571.4
108578641	10/11/2006	0	Crown Waterway	8980.9
108541518	27/07/2007	1	Crown Parcel	4162.4
108592147	4/08/2008	1	Crown Parcel	149645.2
108821411	27/07/2007	1	Crown Parcel	640.9
108592211	23/10/2002	1	Crown Parcel	2020.1
108578633	10/11/2006	1	Crown Parcel	561866.1
108821394	25/10/2007	1	Crown Parcel	104657.7
108578637	10/11/2006	0	Crown Waterway	3345.1
108821412	27/07/2007	1	Crown Parcel	137988.9
108592083	19/08/1998	1	Crown Parcel	55661.7
108592193	10/11/2006	1	Crown Road	3556.9
108592087	19/08/1998	1	Crown Road	368.4
108592151	17/05/2007	5	Crown Parcel	6381.6
108541526	27/07/2007	1	Crown Parcel	9672.3
108821390	17/05/2007	1	Crown Parcel	402549.7
108578591	30/08/2007	1	Crown Parcel	71949.0
108592185	10/11/2006	1	Crown Road	1956.7
108592189	10/11/2006	0	Crown Waterway	3501.8
108592192	10/11/2006	1	Crown Road	492.7
108828321	10/11/2006	0	Crown Waterway	2472.8
108788682	22/11/2008	0	Crown Waterway	264909.5
108578504	10/11/2006	0	Crown Waterway	22753.0
108592196	10/11/2006	1	Crown Road	440.2
108592091	19/08/1998	1	Crown Road	137.5
108312705	19/02/2007	0	Crown Waterway	9355.7
108828313	10/11/2006	0	Crown Waterway	603.5
108810948	10/11/2006	0	Crown Waterway	10682.8
108828317	30/07/2008	0	Crown Waterway	40497.1
108592212	10/11/2006	1	Crown Parcel	10141.7
108541608	9/07/2007	1	Crown Parcel	19544.1
108592148	4/08/2008	1	Crown Parcel	4384.4
108788686	19/02/2007	0	Crown Waterway	30728.9
108578508	10/11/2006	1	Crown Parcel	320.9
108592200	19/08/1998	1	Crown Road	682.8
108828309	10/11/2006	0	Crown Waterway	101448.0
108592204	23/10/2002	1	Crown Parcel	2045.5
108641817	31/10/2001	1	Crown Parcel	31075.4
108592208	23/10/2002	1	Crown Parcel	2026.4
108578647	10/11/2006	1	Crown Parcel	9667.4
108592219	19/08/1998	1	Crown Parcel	29100.8
108578651	10/11/2006	0	Crown Waterway	659.4
108592223	19/08/1998	1	Crown Road	755.2
108592152	10/11/2006	0	Crown Waterway	2855.9
108651834	10/11/2006	1	Crown Road	4035.7
108592180	19/08/1998	1	Crown Road	1723.9
108578643	6/09/2006	1	Crown Parcel	4287.1
108592215	19/08/1998	1	Crown Road	866.9
108592159	19/08/1998	1	Crown Road	3974.8
108578635	10/11/2006	1	Crown Road	3172.0
108592163	19/08/1998	1	Crown Road	4454.9

CADID	Date Modified	Crown Lands	Class	Area (sq m)
108578509	10/11/2006	1	Crown Parcel	1318.5
108578521	10/11/2006	0	Crown Waterwa	407.3
108592155	19/08/1998	1	Crown Road	821.2
108541480	9/07/2007	1	Crown Parcel	24330.4
108821416	27/07/2007	1	Crown Parcel	39838.8
108592099	19/08/1998	1	Crown Road	407.0
108592103	19/08/1998	1	Crown Road	14295.6
108578536	10/11/2006	0	Crown Waterwa	637.8
108592197	19/08/1998	1	Crown Road	3135.8
108592201	19/08/1998	1	Crown Road	3960.9
108821414	27/07/2007	1	Crown Parcel	98005.5
108806641	19/02/2007	0	Crown Waterwa	9946.5
108831224	19/07/2008	1	Crown Parcel	1516.4
108541607	27/07/2007	1	Crown Road	16916.7
108592095	19/08/1998	1	Crown Road	3238.6
108592205	23/10/2002	1	Crown Parcel	2015.1
108821415	27/07/2007	1	Crown Parcel	698780.2
108592106	19/02/2007	1	Crown Road	502.2
108592086	19/08/1998	1	Crown Road	5531.6
108651833	10/11/2006	1	Crown Road	1520.3
108806637	15/05/2008	0	Crown Waterwa	102269.6
108831221	17/09/2008	0	Crown Waterwa	6835.3
108592141	17/05/2007	1	Crown Parcel	15991.4
108592098	19/04/2005	1	Crown Road	6591.4
108592145	19/08/1998	1	Crown Road	687.4
108592102	19/08/1998	1	Crown Road	474.6
108592184	19/08/1998	1	Crown Road	476.8
108592078	19/08/1998	1	Crown Road	16827.0
108831220	2/08/2001	1	Crown Parcel	371073.9
108828308	10/11/2006	0	Crown Waterwa	6721.4
108592188	10/11/2006	0	Crown Waterwa	96.8
108592082	19/08/1998	1	Crown Road	7380.3
108821410	27/07/2007	1	Crown Parcel	6661.2
108592090	19/08/1998	1	Crown Road	256.7
108592081	19/08/1998	1	Crown Road	29236.4
108592094	19/08/1998	1	Crown Road	9666.1
108821393	19/08/1998	1	Crown Parcel	130376.0
108651835	10/11/2006	1	Crown Road	3921.1
108592085	19/08/1998	1	Crown Parcel	49607.1
108831219	10/11/2006	0	Crown Waterwa	9230.7
108831223	19/07/2008	1	Crown Parcel	8971.7
108828312	17/09/2008	0	Crown Waterwa	75904.2
108592216	5/06/2007	1	Crown Road	6125.1
108821389	19/08/1998	1	Crown Parcel	612301.3
108592175	10/11/2006	1	Crown Road	2951.7
108821396	17/05/2007	1	Crown Parcel	2768219.9
108592209	10/11/2006	1	Crown Road	449.5
108592167	19/08/1998	1	Crown Road	245.7
108592171	10/11/2006	1	Crown Road	19999.1
108541496	9/07/2007	1	Crown Road	3174.7
108578541	10/11/2006	0	Crown Waterwa	32787.0
108637716	10/11/2006	0	Crown Waterwa	11263.8
108821413	27/07/2007	1	Crown Parcel	134442.0
108592149	19/08/1998	1	Crown Parcel	519.2
108592142	25/10/2007	1	Crown Parcel	594596.8

CADID	Date Modified	Crown Lands	Class	Area (sq m)
108592213	19/08/1998	1	Crown Road	1938.7
108831217	19/08/1998	1	Crown Parcel	307891.3
108592107	19/02/2007	1	Crown Road	133.0
108592217	19/08/1998	1	Crown Road	2748.0
108592111	19/08/1998	1	Crown Road	751.4
108541609	9/07/2007	1	Crown Parcel	223999.7
108821409	27/07/2007	1	Crown Parcel	98982.6
108592158	19/08/1998	1	Crown Road	401.9
108592089	4/06/2008	1	Crown Road	22113.7
108592162	10/11/2006	1	Crown Road	13167.2
108828307	10/11/2006	0	Crown Waterway	29467.5
108578592	2/07/2008	0	Crown Waterway	14920.2
108592153	19/08/1998	1	Crown Road	1095.6
108592170	19/08/1998	1	Crown Road	1019.7
108821402	27/07/2007	1	Crown Road	9728.1
108829341	17/05/2007	1	Crown Parcel	87967.7
108592157	19/08/1998	1	Crown Road	509.7
108592174	19/08/1998	1	Crown Road	13094.4
108592178	10/11/2006	1	Crown Parcel	13896.1
108592092	19/08/1998	1	Crown Road	514.1
108592224	10/11/2006	0	Crown Waterway	63.5
108592154	19/08/1998	1	Crown Road	366.5
108592096	19/02/2007	1	Crown Road	10390.2
108821392	17/09/2008	5	Crown Parcel	3756076.5
108821391	17/05/2007	1	Crown Parcel	78262.2
108592093	9/05/2007	0	Crown Waterway	32950.5
108582254	9/07/2007	1	Crown Parcel	119780.0
108592166	10/11/2006	1	Crown Road	1093.1
108592084	19/08/1998	1	Crown Parcel	63855.3
108592097	19/08/1998	1	Crown Road	605.0
108578506	10/11/2006	1	Crown Parcel	2845.6
108592146	10/11/2006	1	Crown Road	6935.8
108592088	19/08/1998	1	Crown Road	5050.4
108592220	10/11/2006	1	Crown Parcel	8116.3
108592150	4/08/2008	1	Crown Parcel	6599.4
108592100	19/08/1998	1	Crown Road	5534.3
108821395	25/10/2007	1	Crown Parcel	1024799.2
108592104	19/02/2007	0	Crown Waterway	3122.4
108592110	19/02/2007	0	Crown Waterway	1944.6
108578523	10/11/2006	0	Crown Waterway	5857.5
108592221	19/08/1998	1	Crown Parcel	6174.5
108578632	10/11/2006	1	Crown Road	2695.7
108592225	19/08/1998	1	Crown Road	535.7
108578642	30/08/2007	1	Crown Parcel	41372.5
108592179	10/11/2006	1	Crown Road	8561.9
108578503	10/11/2006	0	Crown Waterway	1414.0
108592183	10/11/2006	1	Crown Road	3889.3
108578644	30/08/2007	1	Crown Parcel	31227.6
108578507	10/11/2006	1	Crown Parcel	5735.3
108592187	10/11/2006	1	Crown Road	27617.5
108578648	10/11/2006	0	Crown Waterway	7972.3
108578634	10/11/2006	1	Crown Parcel	16761.3
108592161	19/08/1998	1	Crown Road	422.5
108592214	19/08/1998	1	Crown Road	426.8

CADID	Date Modified	Crown Lands	Class	Area (sq m)
108828320	10/11/2006	0	Crown Waterwa	1251.0
108592165	19/08/1998	1	Crown Road	595.6
108592119	19/08/1998	1	Crown Road	19325.0
108578636	10/11/2006	1	Crown Road	25167.8
108578640	18/08/1998	0	Crown Waterwa	35330.1
108578626	10/11/2006	1	Crown Road	3911.1
108592206	23/10/2002	1	Crown Parcel	2026.8
108810923	10/11/2006	0	Crown Waterwa	50052.9
108592210	10/11/2006	1	Crown Road	2069.7
108810927	10/11/2006	0	Crown Waterwa	22142.8
108831218	17/05/2007	5	Crown Parcel	10691503.9
108828315	10/11/2006	0	Crown Waterwa	270701.2
108828316	10/11/2006	1	Crown Parcel	17458.5
108639235	6/09/2006	1	Crown Road	10261.5
108592101	19/08/1998	1	Crown Road	8084.2
108592105	19/09/2007	1	Crown Parcel	2795.7
108592169	19/08/1998	1	Crown Road	2838.0
108592194	19/08/1998	1	Crown Road	4061.3
108641180	2/08/2001	1	Crown Parcel	148027.5
108592198	10/11/2006	1	Crown Road	5866.8
108828314	10/11/2006	0	Crown Waterwa	407.4
108448870	19/02/2007	0	Crown Waterwa	214.9
108541497	9/07/2007	1	Crown Road	2378.2
108592109	19/08/1998	1	Crown Road	12188.2
108592218	10/11/2006	1	Crown Parcel	6124.9
108592222	19/08/1998	1	Crown Road	4333.3
108828322	10/11/2006	0	Crown Waterwa	841.1
108592108	19/02/2007	1	Crown Road	53186.1
108541482	9/07/2007	1	Crown Parcel	156617.5
108592190	10/11/2006	1	Crown Road	368.8
108592191	10/11/2006	1	Crown Road	1894.6
108592140	19/08/1998	1	Crown Parcel	128456.6
108592202	19/08/1998	1	Crown Road	3949.8
108828318	6/09/2006	0	Crown Waterwa	1314.8
108592182	10/11/2006	1	Crown Road	356.9
108448868	10/11/2006	0	Crown Waterwa	606.3
108592080	19/08/1998	1	Crown Road	388.0
108592186	10/11/2006	1	Crown Parcel	9259.3
108448871	19/02/2007	1	Crown Parcel	6774.4
108592195	10/11/2006	1	Crown Road	1677.6
108448869	10/11/2006	0	Crown Waterwa	235.7
108592199	19/08/1998	1	Crown Road	4037.5
108788553	9/05/2007	1	Crown Road	228839.4
108448867	19/02/2007	0	Crown Waterwa	1529.0
108541507	27/07/2007	1	Crown Road	2981.7
108592177	10/11/2006	1	Crown Road	1690.7
108831225	19/07/2008	1	Crown Parcel	396.6
108541511	17/07/2007	1	Crown Road	21910.9
108592181	10/11/2006	1	Crown Road	4333.2
108821417	27/07/2007	1	Crown Parcel	4311.2
108592173	19/08/1998	1	Crown Road	1269.6
108831222	10/11/2006	0	Crown Waterwa	48.8
108541515	9/07/2007	1	Crown Parcel	141011.8
108592323	17/07/2007	1	Crown Road	11599.5

CADID	Date Modified	Crown Lands	Class	Area (sq m)
108541505	27/07/2007	1	Crown Road	4053.5
108592117	19/08/1998	1	Crown Road	404.4
108578646	18/08/1998	1	Crown Road	1936.6
108592156	22/11/2008	1	Crown Parcel	230882.4
108578650	10/11/2006	1	Crown Parcel	65177.2
108541495	9/07/2007	1	Crown Road	5960.9
108592079	19/08/1998	1	Crown Parcel	148976.3
108592113	19/08/1998	1	Crown Road	23659.5
108312706	10/11/2006	0	Crown Waterway	1233.1
108541487	9/07/2007	1	Crown Parcel	93033.1
108592172	19/08/1998	1	Crown Parcel	9010.3
108592176	10/11/2006	1	Crown Road	386.5
108592160	19/08/1998	1	Crown Road	3036.6
108592164	10/11/2006	1	Crown Road	846.0
108592168	10/11/2006	1	Crown Road	3822.3
108592203	19/08/1998	1	Crown Road	3802.1
108592207	23/10/2002	1	Crown Parcel	2049.7
108541532	17/08/1998	1	Crown Parcel	163395.1
108578649	10/11/2006	1	Crown Parcel	16440.2
108592112	19/08/1998	1	Crown Road	3314.2
108788683	19/02/2007	0	Crown Waterway	476248.6
157563366	17/05/2007	5	Crown Parcel	205652.0
160868525	8/07/2008	1	Crown Road	613.4
160868526	8/07/2008	1	Crown Road	608.4
160868529	8/07/2008	1	Crown Road	4057.6

CADID	Date Modified	Road Type	Road Corridor	Road Name	Classsubty	Area (sq m)
101199791	10/11/2006	Road	Road	RAILWAY PDE	Public Road In Use	1873.9
101199740	10/11/2006	Road	Road	MENANGLE RD	Public Road In Use	5832.3
101285751	17/02/1993	Road	Road	ILLAWARRA ST	Public Road In Use	1723.9
101285900	10/11/2006	Intersection	Road		Public Road In Use	147.1
101200887	10/11/2006	Road	Road	WOLLONDILLY AVE	Public Road In Use	6754.0
104542001	6/09/2006	Road	Road	DONALDS RANGE RD	Public Road In Use	21444.7
101284013	17/02/1993	Intersection	Road		Public Road In Use	404.4
101201161	30/07/2008	Road	Road	PICTON RD	Public Road In Use	16078.4
101199848	10/11/2006	Road	Road		Public Road In Use	10767.4
101283905	17/02/1993	Road	Road	BLACKBURN RD	Public Road In Use	29236.4
101200751	10/11/2006	Road	Road	DOUGLAS PARK DR	Public Road In Use	11075.2
104251177	10/11/2006	Road	Road	NEPEAN ST	Public Road In Use	3345.7
101285494	17/02/1993	Intersection	Road		Public Road In Use	540.2
101199381	30/04/1993	Road	Road	PLATEAU DR	Public Road In Use	7644.0
101200042	7/06/1993	Road	Road		Public Road In Use	7720.5
101285606	17/02/1993	Intersection	Road		Public Road In Use	489.6
104331775	6/09/2006	Road	Road	STONEBROOK MEADOWS RD	Public Road In Use	11021.4
104595024	10/11/2006	Road	Road	NEPEAN ST	Public Road In Use	19690.8
101283991	17/02/1993	Intersection	Road		Public Road In Use	388.0
101201060	10/11/2006	Road	Road	DOUGLAS PARK DR	Public Road In Use	5417.7
101285390	17/02/1993	Road	Road	SARAH PL	Public Road In Use	577.6
101200387	2/07/2008	Road	Road	GORDON ST	Public Road In Use	4057.6
101285492	10/11/2006	Road	Road	DENISON PL	Public Road In Use	1128.1
104003421	10/11/2006	Intersection	Road		Public Road In Use	412.3
101285355	18/01/1994	Road	Road		Public Road In Use	313.4
101199885	10/11/2006	Intersection	Road		Public Road In Use	409.2
101199849	10/11/2006	Road	Road	JENKINS ST	Public Road In Use	4573.1
104187091	10/11/2006	Road	Road	KERR ST	Public Road In Use	1096.0
101200739	10/11/2006	Road	Road	WILTON RD	Public Road In Use	30080.0
101284074	17/02/1993	Intersection	Road		Public Road In Use	407.0
101200740	10/11/2006	Road	Road	DREDGE AVE	Public Road In Use	769.5
101284029	17/02/1993	Intersection	Road		Public Road In Use	514.1
101285363	10/11/2006	Intersection	Road		Public Road In Use	815.0
101285732	13/11/2003	Intersection	Road		Public Road In Use	755.2
101285453	18/01/1994	Road	Road		Public Road In Use	638.1
101201130	27/02/2003	Intersection	Road		Public Road In Use	2356.1
101285865	10/11/2006	Road	Road		Public Road In Use	4261.4
101284031	17/02/1993	Road	Road	GEORGES RD	Public Road In Use	5011.2
101199400	6/09/2006	Intersection	Road		Public Road In Use	1662.4
101199767	10/11/2006	Road	Road	MENANGLE RD	Public Road In Use	15211.0
101285266	10/11/2006	Road	Road	LEWIS ST	Public Road In Use	1615.7
101199601	6/09/2006	Intersection	Road		Public Road In Use	3504.7
104003424	10/11/2006	Road	Road	GANDANGARA ST	Public Road In Use	6308.7
104218493	10/11/2006	Road	Road	HUME HWY	Public Road In Use	86217.2
101285657	17/02/1993	Road	Road	RIXON RD	Public Road In Use	1499.7
104442993	10/11/2006	Intersection	Road		Public Road In Use	2059.8
101199883	10/11/2006	Road	Road	CAMDEN RD	Public Road In Use	2949.1
101199867	10/11/2006	Intersection	Road		Public Road In Use	401.9
101285698	10/11/2006	Road	Road	KENNEDY ST	Public Road In Use	564.9
101199872	10/11/2006	Road	Road	STATION ST	Public Road In Use	5425.1
104589559	10/11/2006	Intersection	Road		Public Road In Use	406.2
101285378	10/11/2006	Road	Road	MACQUARIEDALE RD	Public Road In Use	559.4
101285443	10/11/2006	Road	Road	TOGGERAI ST	Public Road In Use	1812.1
101285933	10/11/2006	Undefined	Pathway		Public Road In Use	110.6
101200086	10/11/2006	Road	Road	MENANGLE RD	Public Road In Use	5813.0
101285628	17/02/1993	Road	Road	KENNEDY ST	Public Road In Use	3802.1
101200903	10/11/2006	Road	Road	DOUGLAS PARK DR	Public Road In Use	5954.0

CADID	Date Modified	Road Type	Road Corridor	Road Name	Classsubty	Area (sq m)
101199876	10/11/2006	Intersection	Road		Public Road In Use	443.3
101201046	10/11/2006	Intersection	Road		Public Road In Use	1019.8
101199884	10/11/2006	Intersection	Road		Public Road In Use	403.9
101200785	10/11/2006	Intersection	Road		Public Road In Use	416.3
101200145	10/11/2006	Road	Road	STATION ST	Public Road In Use	533.1
104218496	10/11/2006	Road	Road	HUME HWY	Public Road In Use	23846.2
101285340	17/02/1993	Road	Road	PERCIVAL AVE	Public Road In Use	2280.9
101199888	10/11/2006	Road	Road	CAMDEN RD	Public Road In Use	2808.0
101199887	10/11/2006	Intersection	Road		Public Road In Use	424.7
101285546	10/11/2006	Road	Road	KENNEDY ST	Public Road In Use	3889.3
101200372	10/11/2006	Intersection	Road		Public Road In Use	625.7
101289833	29/06/2007	Road	Road	HOBART ST	Public Road In Use	7841.1
101199789	10/11/2006	Intersection	Road		Public Road In Use	515.2
101284055	5/01/1999	Intersection	Road		Public Road In Use	474.6
101285773	4/09/2008	Road	Road	COLLIERY RD	Public Road In Use	509.7
101200412	10/11/2006	Road	Road	ASHWOOD RD	Public Road In Use	43309.6
104244294	8/05/2000	Road	Road	TOP RIDGE RD	Public Road In Use	14929.2
101285783	18/01/1994	Road	Road		Public Road In Use	821.2
101284106	17/02/1993	Intersection	Road		Public Road In Use	605.0
101199755	30/04/1993	Intersection	Road		Public Road In Use	1172.3
101200140	10/11/2006	Road	Road	STATION ST	Public Road In Use	2677.0
103794242	10/11/2006	Road	Road	DOUGLAS PARK DR	Public Road In Use	4372.6
101199987	30/04/1993	Road	Road	BLADES PL	Public Road In Use	2501.9
101200366	10/11/2006	Road	Road	GORDON ST	Public Road In Use	3911.1
101285855	10/11/2006	Intersection	Road		Public Road In Use	665.1
101285889	10/11/2006	Intersection	Road		Public Road In Use	501.3
101285729	10/11/2006	Road	Road	MARKET ST	Public Road In Use	2069.7
104474808	1/05/2002	Road	Road	QUIRKES LANE	Public Road In Use	36407.5
101200213	10/11/2006	Road	Road	ST JAMES AVE	Public Road In Use	1872.2
101200210	10/11/2006	Intersection	Road		Public Road In Use	381.3
101285727	10/11/2006	Intersection	Road		Public Road In Use	560.6
104541995	19/02/2003	Road	Road	REMEMBRANCE DRWY	Public Road In Use	7800.9
101285285	16/12/1993	Road	Road	APPIN RD	Public Road In Use	4952.4
101201064	10/11/2006	Road	Road	MORETON PARK RD	Public Road In Use	163.4
104687009	10/11/2006	Road	Road	CARROLLS RD	Public Road In Use	30196.2
104063416	10/11/2006	Road	Road	MACQUARIEDALE RD	Public Road In Use	11578.8
101201066	10/11/2006	Intersection	Road		Public Road In Use	1723.3
101285887	18/01/1994	Road	Pathway		Private Road	5133.5
101285790	10/11/2006	Intersection	Road		Public Road In Use	131.0
101284028	17/02/1993	Road	Road	LYSAGHTS RD	Public Road In Use	137.5
101285452	17/02/1993	Road	Road	KING ST	Public Road In Use	3949.8
101285433	17/02/1993	Road	Road	NEAL PL	Public Road In Use	2567.8
101283891	19/02/2007	Intersection	Road		Public Road In Use	133.0
101200084	10/11/2006	Intersection	Road		Public Road In Use	405.5
101285744	17/02/1993	Road	Road	ILLAWARRA ST	Public Road In Use	1019.7
101289032	27/07/2007	Road	Road	NATIONAL AVE	Public Road In Use	3790.7
103833401	22/05/1997	Road	Road		Public Road In Use	5531.6
101285678	17/02/1993	Road	Road	MARKET ST	Public Road In Use	1938.7
101288915	14/12/1993	Road	Pathway		Private Road	8096.5
101285894	10/11/2006	Road	Road	MIRCA PL	Public Road In Use	3703.4
101285569	10/11/2006	Road	Road		Public Road In Use	260.2
101285789	17/02/1993	Intersection	Road		Public Road In Use	426.8
101285553	10/11/2006	Intersection	Road		Public Road In Use	492.7
103713824	10/11/2006	Road	Road	APPIN RD	Public Road In Use	3004.8
104187087	10/11/2006	Intersection	Road		Public Road In Use	414.0
104251183	10/11/2006	Road	Road	DURHAM ST	Public Road In Use	4299.4

CADID	Date Modified	Road Type	Road Corridor	Road Name	Classsubty	Area (sq m)
101285330	19/09/2008	Intersection	Road		Public Road In Use	517.9
101284077	19/04/2005	Road	Road	VICTORIA RD	Public Road In Use	6591.4
101285888	17/02/1993	Intersection	Pathway		Private Road	404.7
101284004	17/02/1993	Road	Road	KENWOOD RD	Public Road In Use	3314.2
101285290	10/11/2006	Road	Road	THOMAS ST	Public Road In Use	1120.8
101199866	10/11/2006	Intersection	Road		Public Road In Use	431.3
101201128	2/07/2008	Road	Road		Public Road In Use	3396.0
103833399	22/05/1997	Intersection	Road		Public Road In Use	368.4
104630326	10/11/2006	Intersection	Road		Public Road In Use	1161.6
104589560	20/06/2008	Road	Road	DUGGAN ST	Public Road In Use	3476.8
101638714	5/01/1999	Road	Road	MINERVA RD	Public Road In Use	23659.5
101284024	17/02/1993	Intersection	Road		Public Road In Use	256.7
101289037	27/07/2007	Road	Road		Public Road In Use	2981.7
101285917	28/02/2003	Intersection	Road		Public Road In Use	728.6
101200001	10/11/2006	Road	Road	FINNS RD	Public Road In Use	22033.1
104003426	10/11/2006	Intersection	Road		Public Road In Use	471.0
101285733	17/02/1993	Road	Road	KENNEDY ST	Public Road In Use	761.2
101284107	17/02/1993	Road	Road	KATANNA RD	Public Road In Use	7682.6
104118114	12/01/2007	Road	Road	HAWKEY RD	Public Road In Use	14864.9
101285781	4/09/2008	Road	Road	COLLIERY RD	Public Road In Use	654.3
101285691	17/02/1993	Intersection	Road		Public Road In Use	711.0
101289186	29/06/2007	Road	Road	STEPHEN DR	Public Road In Use	3046.0
101285785	22/11/2008	Intersection	Road		Public Road In Use	366.5
104589558	20/06/2008	Intersection	Road		Public Road In Use	428.4
101285237	10/11/2006	Road	Road	WILTON RD	Public Road In Use	18615.1
101285701	10/11/2006	Intersection	Road		Public Road In Use	599.8
101199825	10/11/2006	Road	Road	MORETON ST	Public Road In Use	1859.4
101285749	4/06/2003	Road	Road	BULLI APPIN RD	Public Road In Use	2838.0
104557178	10/11/2006	Intersection	Road		Public Road In Use	561.7
103794253	10/11/2006	Intersection	Road		Public Road In Use	488.7
101285413	19/09/2008	Intersection	Road		Public Road In Use	1003.4
101201069	10/11/2006	Intersection	Road		Public Road In Use	412.3
101200390	10/11/2006	Road	Road	GORDON ST	Public Road In Use	2695.7
101200089	10/11/2006	Intersection	Road		Public Road In Use	358.3
101285296	10/11/2006	Intersection	Road		Public Road In Use	343.2
101285252	17/09/2008	Road	Road	CATARACT DAM RD	Public Road In Use	51936.5
104268411	6/09/2006	Road	Road	SHEIL RD	Public Road In Use	10261.5
101200359	27/02/2003	Road	Road	WILTON PARK RD	Public Road In Use	8806.1
101285791	10/11/2006	Intersection	Road		Public Road In Use	440.2
101285799	4/09/2008	Intersection	Road		Public Road In Use	422.5
101285903	3/09/2008	Intersection	Road		Public Road In Use	435.9
104003425	10/11/2006	Road	Road	STATION ST W	Public Road In Use	15162.8
104188173	10/11/2006	Road	Road	CAMDEN RD	Public Road In Use	14170.6
101285890	10/11/2006	Road	Road	CATARACT DAM RD	Public Road In Use	15674.7
101201070	10/11/2006	Road	Road	DURHAM ST	Public Road In Use	3070.9
101199823	10/11/2006	Road	Road	HOPSON ST	Public Road In Use	1188.3
101285509	10/11/2006	Road	Road	RIXON RD	Public Road In Use	1050.8
101199751	10/11/2006	Intersection	Road		Public Road In Use	2261.9
101288907	17/07/2007	Road	Pathway		Private Road	37410.9
101285802	10/11/2006	Road	Road	WILTON RD	Public Road In Use	14680.0
101285746	17/02/1993	Road	Road	TOGGERAI ST	Public Road In Use	2144.5
101199880	10/11/2006	Road	Road	HOPSON ST	Public Road In Use	2378.9
101285627	17/02/1993	Intersection	Road		Public Road In Use	682.8
101285677	17/02/1993	Intersection	Road		Public Road In Use	866.9
101285423	17/02/1993	Road	Road	MACNAMARA PL	Public Road In Use	2966.2
104228805	10/11/2006	Intersection	Road		Public Road In Use	179.3

CADID	Date Modified	Road Type	Road Corridor	Road Name	Classsubty	Area (sq m)
101199986	30/04/1993	Intersection	Road		Public Road In Use	1101.2
104287415	10/11/2006	Road	Road	BURKE ST	Public Road In Use	2951.7
104251181	10/11/2006	Road	Road	PARK ST	Public Road In Use	3788.4
101199558	6/09/2006	Road	Road	OLD RAZORBACK RD	Public Road In Use	45270.5
101199514	19/02/2003	Intersection	Road		Public Road In Use	577.7
101201074	10/11/2006	Intersection	Road		Public Road In Use	402.7
101200015	10/11/2006	Road	Road	DAWSONS RD	Public Road In Use	25862.6
103767506	30/07/1996	Road	Road	PRICES RD	Public Road In Use	11481.5
104589561	10/11/2006	Road	Road	DOWLE ST	Public Road In Use	2520.8
101285800	4/09/2008	Intersection	Road		Public Road In Use	318.5
104287409	10/11/2006	Intersection	Road		Public Road In Use	416.3
101199443	10/11/2006	Road	Road	JENKINS ST	Public Road In Use	25097.6
101199758	10/11/2006	Road	Road	MENANGLE RD	Public Road In Use	3271.3
101285760	10/11/2006	Road	Road	GEORGE ST	Public Road In Use	3822.3
101284075	17/02/1993	Road	Road	AIRLIE RD	Public Road In Use	8084.2
101285803	10/11/2006	Intersection	Road		Public Road In Use	4924.6
101284036	17/02/1993	Road	Road	LYSAGHTS RD	Public Road In Use	9666.1
101285716	17/02/1993	Road	Road	ILLAWARRA ST	Public Road In Use	4454.9
101285685	17/02/1993	Intersection	Road		Public Road In Use	1140.0
101285333	10/11/2006	Road	Road	SPORTSGROUND PDE	Public Road In Use	1676.2
101283933	17/02/1993	Road	Road	EXLEY RD	Public Road In Use	9616.9
101285764	10/11/2006	Road	Road	ILLAWARRA ST	Public Road In Use	1956.7
104133097	9/09/1999	Intersection	Road		Public Road In Use	858.8
101285200	10/11/2006	Road	Road	NORTHAMPTONDALE RD	Public Road In Use	8874.4
104375767	10/11/2006	Road	Road	TECHNOLOGY DR	Public Road In Use	5132.3
101283895	19/02/2007	Road	Road		Public Road In Use	502.2
101285680	17/02/1993	Road	Road	KENNEDY ST	Public Road In Use	2748.0
101292203	29/06/2007	Intersection	Road		Public Road In Use	505.2
101973936	23/05/2007	Road	Road	MITCHELL PL	Public Road In Use	17088.3
101285342	3/09/2008	Road	Road	RIXON RD	Public Road In Use	5707.0
101199685	10/11/2006	Road	Road	MCWILLIAM DR	Public Road In Use	22578.7
101289729	29/06/2007	Road	Road	SANDHURST ST	Public Road In Use	7454.6
104187276	6/09/2006	Intersection	Road		Public Road In Use	2394.4
101285473	17/02/1993	Road	Road	KERR ST	Public Road In Use	1253.0
101285912	10/11/2006	Undefined	Pathway		Public Road In Use	303.6
101284005	17/02/1993	Road	Road	KENWOOD RD	Public Road In Use	5936.7
104229338	8/05/2000	Road	Road	GIBALTAR DR	Public Road In Use	7530.3
101285392	10/11/2006	Road	Road	ELIZABETH CL	Public Road In Use	1595.7
101200345	30/04/1993	Intersection	Road		Public Road In Use	231.2
101303294	27/07/2007	Road	Road		Public Road In Use	16916.7
104756227	10/11/2006	Road	Road	KENNEDY GR	Public Road In Use	2875.5
101285442	10/11/2006	Intersection	Road		Public Road In Use	607.6
101285763	10/11/2006	Road	Road	CHURCH ST	Public Road In Use	4333.2
101220859	19/02/2007	Road	Road	MENANGLE RD	Public Road In Use	24430.8
104228807	8/05/2000	Intersection	Road		Public Road In Use	169.7
101285456	10/11/2006	Intersection	Road		Public Road In Use	650.5
101283993	17/02/1993	Road	Road	LYSAGHTS RD	Public Road In Use	7380.3
101285728	17/02/1993	Road	Road	BURKE ST	Public Road In Use	4037.5
101285204	10/11/2006	Road	Road		Public Road In Use	4464.4
101200203	10/11/2006	Undefined	Pathway		Public Road In Use	261.5
101199871	10/11/2006	Intersection	Road		Public Road In Use	495.2
104109983	29/06/2007	Road	Road	PRINCES HWY	Public Road In Use	4075.5
101285454	10/11/2006	Road	Road	MACQUARIEDALE RD	Public Road In Use	783.4
101200225	10/11/2006	Road	Road	HAINES PL	Public Road In Use	2807.8
104229330	8/05/2000	Road	Road	GIBALTAR DR	Public Road In Use	468.9
101199988	10/11/2006	Intersection	Road		Public Road In Use	1203.7

CADID	Date Modified	Road Type	Road Corridor	Road Name	Classsubty	Area (sq m)
101199847	10/11/2006	Road	Road	CAMDEN RD	Public Road In Use	2140.9
101285265	17/02/1993	Road	Road	KERR ST	Public Road In Use	1470.0
101199991	30/04/1993	Road	Road	WRIGHTSON WAY	Public Road In Use	7599.7
101288914	17/02/1993	Intersection	Pathway		Private Road	278.8
101200058	10/11/2006	Road	Road	RIVERSFORD CL	Public Road In Use	4084.9
104251172	10/11/2006	Road	Road	CAMDEN RD	Public Road In Use	2718.5
101289046	17/07/2007	Road	Road		Public Road In Use	21910.9
103936931	9/07/2007	Road	Road		Public Road In Use	2378.2
101200878	30/04/1993	Road	Road	BROOKS POINT RD	Public Road In Use	2273.3
101199713	7/06/1993	Road	Road		Public Road In Use	6519.5
101285792	17/02/1993	Intersection	Road		Public Road In Use	476.8
101285777	4/09/2008	Road	Road	COLLIERY RD	Public Road In Use	3664.7
101199868	10/11/2006	Road	Road	MORETON ST	Public Road In Use	3216.3
101285525	17/02/1993	Intersection	Road		Public Road In Use	496.9
103947450	10/11/2006	Road	Road	APPIN RD	Public Road In Use	1163.8
101285786	10/11/2006	Road	Road	CHURCH ST	Public Road In Use	1690.7
104630327	17/10/2007	Road	Road	CARROLLS RD	Public Road In Use	20354.4
101285758	17/02/1993	Road	Road	GEORGE ST	Public Road In Use	3036.6
101283981	17/02/1993	Road	Road	LYSAGHTS RD	Public Road In Use	16827.0
104133096	9/09/1999	Intersection	Road		Public Road In Use	1128.4
101285277	17/02/1993	Road	Road	ST JAMES PL	Public Road In Use	5878.1
103794252	10/11/2006	Road	Road	RAILWAY PDE	Public Road In Use	1193.0
101200216	10/11/2006	Road	Road	HAINES PL	Public Road In Use	1472.8
104474811	11/01/2007	Road	Road	CUMMINS RD	Public Road In Use	43908.8
101200782	10/11/2006	Road	Road	DREDGE AVE	Public Road In Use	12658.9
101285901	17/03/2003	Road	Road	NORTHAMPTONDALE RD	Public Road In Use	1078.9
104228804	8/05/2000	Intersection	Road		Public Road In Use	71.7
101284057	22/09/1993	Road	Road	VICTORIA RD	Public Road In Use	5534.3
101201072	10/11/2006	Intersection	Road		Public Road In Use	340.3
101200088	10/11/2006	Road	Road	MENANGLE RD	Public Road In Use	33981.8
101285292	10/11/2006	Road	Road	KING ST	Public Road In Use	1221.8
101284114	9/05/2007	Road	Road	FAIRBURN RD	Public Road In Use	21081.9
101285264	10/11/2006	Intersection	Road		Public Road In Use	466.0
101200885	30/04/1993	Road	Road	QUARTER SESSIONS RD	Public Road In Use	1936.6
101201078	10/11/2006	Intersection	Road		Public Road In Use	186.5
101200215	10/11/2006	Intersection	Road		Public Road In Use	345.5
101285621	17/02/1993	Road	Road	KENNEDY ST	Public Road In Use	4061.3
101199865	10/11/2006	Road	Road	CAMDEN RD	Public Road In Use	4364.4
101200460	5/01/2007	Intersection	Road		Public Road In Use	608.4
101285609	18/01/1994	Road	Road		Public Road In Use	249.4
101285563	5/06/2007	Road	Road	MARKET ST	Public Road In Use	6125.1
103947459	10/11/2006	Road	Road	KING ST	Public Road In Use	2898.9
101285383	17/02/1993	Road	Road	ELIZABETH CL	Public Road In Use	1983.5
101201044	10/11/2006	Road	Road	WILTON RD	Public Road In Use	13358.0
104283303	6/09/2006	Road	Road	DONALDS RANGE RD	Public Road In Use	735.2
104542009	21/10/2002	Road	Road	MOUNT HERCULES RD	Public Road In Use	35948.7
101285230	10/11/2006	Road	Road	BROOKS POINT RD	Public Road In Use	19999.1
103713825	10/11/2006	Road	Road	APPIN RD	Public Road In Use	8609.0
104371477	10/11/2006	Road	Road	MENANGLE RD	Public Road In Use	8776.8
101285513	10/11/2006	Road	Road	RIXON RD	Public Road In Use	2127.8
101285673	10/11/2006	Road	Road		Public Road In Use	1677.6
101285299	10/11/2006	Road	Road	MACQUARIEDALE RD	Public Road In Use	2253.4
101285391	17/02/1993	Intersection	Road		Public Road In Use	560.4
104630412	6/09/2006	Road	Road	PICTON RD	Public Road In Use	116850.2
103772100	10/11/2006	Intersection	Road		Public Road In Use	509.2
101285670	17/02/1993	Road	Road	TOGGERAI ST	Public Road In Use	3937.2

CADID	Date Modified	Road Type	Road Corridor	Road Name	Classsubty	Area (sq m)
101200158	30/04/1993	Intersection	Road		Public Road In Use	976.0
101201055	10/11/2006	Road	Road	CAMDEN RD	Public Road In Use	4102.2
101199875	10/11/2006	Road	Road	CAMDEN RD	Public Road In Use	5931.0
101285796	10/11/2006	Intersection	Road		Public Road In Use	449.5
101285674	17/02/1993	Intersection	Road		Public Road In Use	612.0
101285481	17/02/1993	Intersection	Road		Public Road In Use	511.0
101285544	10/11/2006	Intersection	Road		Public Road In Use	539.0
101289039	27/07/2007	Intersection	Road		Public Road In Use	4577.4
101285797	4/09/2008	Intersection	Road		Public Road In Use	401.9
101285279	17/02/1993	Intersection	Road		Public Road In Use	2717.1
101289051	27/07/2007	Intersection	Road		Public Road In Use	2126.1
101199798	10/11/2006	Road	Road	JENKINS ST	Public Road In Use	1680.2
101285676	17/02/1993	Road	Road	PITT ST	Public Road In Use	3960.9
101285303	17/02/1993	Intersection	Road		Public Road In Use	666.2
101285538	10/11/2006	Road	Road	TOGGERAI ST	Public Road In Use	2330.8
101289040	27/07/2007	Road	Road	MT OUSLEY RD	Public Road In Use	86077.2
101285602	17/02/1993	Road	Road	GLEBE CL	Public Road In Use	1476.3
101200085	10/11/2006	Road	Road	STATION ST	Public Road In Use	3735.2
101285769	10/11/2006	Intersection	Road		Public Road In Use	386.5
101199754	22/04/1994	Road	Road	MENANGLE RD	Public Road In Use	4390.5
101200880	30/04/1993	Intersection	Road		Public Road In Use	126.6
101285474	10/11/2006	Road	Road	WINTON ST	Public Road In Use	6937.5
104474807	1/05/2002	Intersection	Road		Public Road In Use	1984.9
101199860	10/11/2006	Road	Road	RAILWAY PDE	Public Road In Use	5854.6
101289287	29/06/2007	Road	Road	HIGHLANDS PDE	Public Road In Use	748.9
101285793	10/11/2006	Intersection	Road		Public Road In Use	356.9
101199870	10/11/2006	Intersection	Road		Public Road In Use	568.2
104187099	10/11/2006	Road	Road	HUME PL	Public Road In Use	1182.1
101200459	10/11/2006	Intersection	Road		Public Road In Use	613.4
101285688	10/11/2006	Road	Road	KENNEDY ST	Public Road In Use	1939.9
101285722	4/06/2003	Road	Road	BULLI APPIN RD	Public Road In Use	13094.4
103833400	22/05/1997	Road	Road	LYSAGHTS RD	Public Road In Use	5050.4
101285642	18/01/1994	Road	Road		Public Road In Use	234.9
101285743	17/02/1993	Intersection	Road		Public Road In Use	541.4
101200143	10/11/2006	Road	Road	STEVENS RD	Public Road In Use	2809.0
104548531	27/07/2007	Road	Road	MT OUSLEY RD	Public Road In Use	34564.5
101285879	10/11/2006	Road	Road		Public Road In Use	6935.8
101285798	4/09/2008	Intersection	Road		Public Road In Use	1181.4
101285885	18/01/1994	Road	Pathway		Private Road	4874.0
101285752	17/02/1993	Road	Road	KING ST	Public Road In Use	3135.8
101285867	10/11/2006	Road	Road		Public Road In Use	357.2
104635815	29/06/2007	Road	Road	HOBART ST	Public Road In Use	2365.8
101200087	19/12/2007	Road	Road	MENANGLE RD	Public Road In Use	20972.4
104187089	10/11/2006	Road	Road	KERR ST	Public Road In Use	1327.8
101285377	10/11/2006	Intersection	Road		Public Road In Use	495.0
101285339	3/09/2008	Intersection	Road		Public Road In Use	529.4
101220850	19/02/2007	Road	Road	MENANGLE RD	Public Road In Use	13178.7
101200784	10/11/2006	Intersection	Road		Public Road In Use	400.3
101285771	10/11/2006	Road	Road		Public Road In Use	1894.6
101285273	4/09/2008	Road	Road	COLLIERY RD	Public Road In Use	13167.2
101285629	17/02/1993	Road	Road	KING ST	Public Road In Use	1576.3
101199708	7/06/1993	Road	Road		Public Road In Use	4611.1
101285737	13/11/2003	Road	Road	MARY ANN DYSON RD	Public Road In Use	4333.3
101200757	10/11/2006	Road	Road	TRENTHAM AVE	Public Road In Use	4466.0
101199869	10/11/2006	Road	Road	CAMDEN RD	Public Road In Use	168.8
101200985	10/11/2006	Intersection	Road		Public Road In Use	496.6

CADID	Date Modified	Road Type	Road Corridor	Road Name	Classsubty	Area (sq m)
101285770	10/11/2006	Road	Road		Public Road In Use	8561.9
101199874	10/11/2006	Road	Road	STATION ST W	Public Road In Use	3636.9
101285747	4/06/2003	Intersection	Road		Public Road In Use	1269.6
101285684	17/02/1993	Road	Road	BROUGHTON CR	Public Road In Use	2557.6
104283301	6/09/2006	Intersection	Road		Public Road In Use	660.0
101199985	30/04/1993	Road	Road	SULLIVAN RD	Public Road In Use	2094.0
101285510	10/11/2006	Intersection	Road		Public Road In Use	582.0
101285482	17/02/1993	Road	Road	KERR ST	Public Road In Use	1941.5
104287414	10/11/2006	Road	Road	TOGGERAI ST	Public Road In Use	1245.4
101285601	17/02/1993	Intersection	Road		Public Road In Use	559.5
101284169	17/02/1993	Road	Road		Public Road In Use	6630.2
101285227	7/03/2003	Intersection	Road		Public Road In Use	552.0
101200074	10/11/2006	Road	Road		Public Road In Use	8711.9
101200754	10/11/2006	Road	Road	CARRA AVE	Public Road In Use	838.3
101201125	6/09/2006	Road	Road	PICTON RD	Public Road In Use	11775.6
101201077	10/11/2006	Intersection	Road		Public Road In Use	422.3
101285271	10/11/2006	Road	Road	SPORTSGROUND PDE	Public Road In Use	4310.2
101200995	10/11/2006	Intersection	Road		Public Road In Use	954.6
101200309	10/11/2006	Road	Road	DOUGLAS PARK DR	Public Road In Use	29289.7
101285805	19/09/2007	Road	Road	WILTON RD	Public Road In Use	110410.7
101201059	10/11/2006	Road	Road	DOUGLAS PARK DR	Public Road In Use	6855.5
101199705	11/01/2007	Road	Road		Public Road In Use	12883.5
101201213	6/09/2006	Road	Road	WILTON PARK RD	Public Road In Use	14220.9
101285909	10/11/2006	Road	Road	ANDERSON CL	Public Road In Use	743.3
101285675	17/02/1993	Road	Road	KING ST	Public Road In Use	980.5
104657330	10/11/2006	Road	Road	APPIN RD	Public Road In Use	5092.2
101200032	30/04/1993	Road	Road	QUIRKES LANE	Public Road In Use	6249.2
101285717	4/09/2008	Road	Road	COLLIERY RD	Public Road In Use	3974.8
101285891	17/02/1993	Road	Road	APPIN FALLS TRK	Public Road In Use	7651.4
103675321	19/09/2007	Road	Road	WILTON RD	Public Road In Use	51605.8
101200211	10/11/2006	Road	Road	SULMAN PL	Public Road In Use	862.4
101200767	10/11/2006	Intersection	Road		Public Road In Use	451.8
101199757	30/04/1993	Intersection	Road		Public Road In Use	829.7
104463690	10/11/2006	Road	Road		Public Road In Use	25167.8
101285497	17/02/1993	Road	Road	KERR ST	Public Road In Use	2684.0
104461776	6/09/2006	Road	Road	STONEBROOK MEADOWS RD	Public Road In Use	16708.4
104461771	17/09/2008	Road	Road	DONALDS RANGE RD	Public Road In Use	203.1
104003423	10/11/2006	Intersection	Road		Public Road In Use	201.2
101285607	17/02/1993	Road	Road	GLEBE CL	Public Road In Use	1649.0
103713815	10/11/2006	Intersection	Road		Public Road In Use	2259.3
104133105	9/09/1999	Road	Road	MOUNT HERCULES RD	Public Road In Use	2731.6
101199741	30/04/1993	Road	Road	CARROLLS RD	Public Road In Use	10853.5
104229331	8/05/2000	Intersection	Road		Public Road In Use	542.2
104187093	10/11/2006	Road	Road	KERR ST	Public Road In Use	3696.8
101284016	5/01/1999	Intersection	Road		Public Road In Use	751.4
104461774	17/09/2008	Intersection	Road		Public Road In Use	584.5
101285940	10/11/2006	Intersection	Road		Public Road In Use	818.3
101200255	10/11/2006	Road	Road		Public Road In Use	1785.5
101200208	10/11/2006	Road	Road	ST JAMES AVE	Public Road In Use	1005.3
101199886	20/06/2008	Intersection	Road		Public Road In Use	394.5
101285205	10/11/2006	Road	Road		Public Road In Use	4966.9
101201057	10/11/2006	Intersection	Road		Public Road In Use	402.1
101199873	10/11/2006	Intersection	Road		Public Road In Use	423.5
101285794	10/11/2006	Intersection	Road		Public Road In Use	140.2
101285814	10/11/2006	Road	Road	QUARTER SESSIONS RD	Public Road In Use	871.0
104228806	10/11/2006	Intersection	Road		Public Road In Use	193.2

CADID	Date Modified	Road Type	Road Corridor	Road Name	Classsubty	Area (sq m)
101200755	10/11/2006	Road	Road	CARRA AVE	Public Road In Use	1439.4
101284222	10/11/2006	Intersection	Road		Public Road In Use	938.9
101285755	10/11/2006	Road	Road	MARKET ST	Public Road In Use	5866.8
101200317	6/09/2006	Road	Road	WILTON PARK RD	Public Road In Use	42942.1
101285923	17/03/2003	Intersection	Road		Public Road In Use	76.5
101201076	10/11/2006	Intersection	Road		Public Road In Use	418.4
104542007	19/02/2003	Intersection	Road		Public Road In Use	4628.6
101284112	17/02/1993	Intersection	Road		Public Road In Use	799.3
101201024	10/11/2006	Road	Road	WILTON RD	Public Road In Use	36336.0
101285446	10/11/2006	Road	Road	CHURCH ST	Public Road In Use	3554.9
101199989	30/04/1993	Road	Road	SULLIVAN RD	Public Road In Use	2097.4
101285643	10/11/2006	Intersection	Road		Public Road In Use	2160.9
101285775	18/01/1994	Road	Road		Public Road In Use	3107.7
104703719	10/11/2006	Road	Road	APPIN RD	Public Road In Use	5854.1
101285767	10/11/2006	Intersection	Road		Public Road In Use	368.8
101199398	6/09/2006	Road	Road	FAIRLEA RD	Public Road In Use	9198.5
101284015	17/02/1993	Road	Road	KENWOOD RD	Public Road In Use	19325.0
101285365	10/11/2006	Road	Road	TOGGERAI ST	Public Road In Use	1713.4
103947455	10/11/2006	Intersection	Road		Public Road In Use	498.3
101285692	10/11/2006	Road	Road	KENNEDY ST	Public Road In Use	1056.7
104557231	6/09/2006	Road	Road	DONALDS RANGE RD	Public Road In Use	21121.9
101285331	19/09/2008	Road	Road	D'ARCY AVE	Public Road In Use	2279.1
100047749	10/11/2006	Road	Road	DURHAM ST	Public Road In Use	6175.9
100051757	10/11/2006	Road	Road	APPIN RD	Public Road In Use	32552.5
100047827	6/09/2006	Road	Road	MARCUS ST	Public Road In Use	25567.7
100047745	10/11/2006	Road	Road	CAMDEN RD	Public Road In Use	810.8
100047814	28/07/2008	Road	Road	PICTON RD	Public Road In Use	55136.2
100051908	27/07/2007	Road	Road		Public Road In Use	9728.1
100051736	17/02/1993	Road	Road		Public Road In Use	13615.5
100047738	10/11/2006	Road	Road	MORETON PARK RD	Public Road In Use	23308.7
100047769	10/11/2006	Road	Road	HUME HWY	Public Road In Use	292417.7
100047808	10/11/2006	Road	Road	NEPEAN ST	Public Road In Use	2157.3
100049689	9/05/2007	Road	Road	OLD ILLAWARRA RD	Public Road In Use	228839.4
100197059	10/11/2006	Road	Road	DOUGLAS PARK DR	Public Road In Use	16629.5
100197058	10/11/2006	Road	Road	WHITTICASE LANE	Public Road In Use	8221.8
104003422	10/11/2006	Road	Road	GANDANGARA ST	Public Road In Use	7154.9
104228813	10/11/2006	Road	Road	FINNS RD	Public Road In Use	9170.1
104351310	10/11/2006	Road	Road	BULLI APPIN RD	Public Road In Use	129602.5
104228814	2/05/2008	Road	Road	FINNS RD	Public Road In Use	20453.6
104541999	21/10/2002	Intersection	Road		Public Road In Use	1304.2
104251194	15/01/2007	Road	Road	JENKINS ST	Public Road In Use	4002.1
104475495	10/11/2006	Road	Road	ELLADALE RD	Public Road In Use	43577.2
104584131	10/11/2006	Road	Road	MENANGLE RD	Public Road In Use	28653.2
104723472	8/11/2007	Road	Road	MENANGLE RD	Public Road In Use	36809.9
101200129	10/11/2006	Intersection	Road		Public Road In Use	705.1
104117783	10/11/2006	Road	Road	MENANGLE RD	Public Road In Use	148576.9
104635817	29/06/2007	Road	Road	HOBART ST	Public Road In Use	2084.5
101200783	10/11/2006	Road	Road	DOUGLAS PARK DR	Public Road In Use	54723.5
101200901	10/11/2006	Intersection	Road		Public Road In Use	1133.2
101289073	27/07/2007	Road	Road		Public Road In Use	14232.3
101285784	22/11/2008	Intersection	Road		Public Road In Use	2245.4
104225263	18/01/1994	Road	Road	BROOKS POINT RD	Public Road In Use	29509.0
101200144	10/11/2006	Intersection	Road		Public Road In Use	618.1
104442994	10/11/2006	Road	Road	PRICES RD	Public Road In Use	12059.5
104475493	10/11/2006	Road	Road	BROOKS POINT RD	Public Road In Use	40476.3
104625023	9/07/2007	Road	Road	APPIN RD	Public Road In Use	98973.1

CADID	Date Modified	Road Type	Road Corridor	Road Name	Classsubty	Area (sq m)
104679627	27/07/2007	Road	Road	MT OUSLEY RD	Public Road In Use	108286.6
100047721	10/11/2006	Road	Road	HUME HWY	Public Road In Use	877360.5
100047722	10/11/2006	Intersection	Road		Public Road In Use	12603.2
100047724	10/11/2006	Road	Road	MORETON PARK RD	Public Road In Use	144792.4
104187090	10/11/2006	Intersection	Road		Public Road In Use	486.3
104289618	10/11/2006	Road	Road	WILTON RD	Public Road In Use	23152.4
104630416	6/09/2006	Intersection	Road		Public Road In Use	5682.7
104661693	19/04/2007	Road	Road	APPIN RD	Public Road In Use	96204.0
101200207	10/11/2006	Intersection	Road		Public Road In Use	739.9
101285759	4/06/2003	Intersection	Road		Public Road In Use	4949.4
103936930	9/07/2007	Road	Road		Public Road In Use	9135.7
104159904	11/11/1999	Road	Road	OLD RAZORBACK RD	Public Road In Use	26207.9
104421489	6/09/2006	Road	Road	MOUNT HERCULES RD	Public Road In Use	64595.4
104463685	19/09/2007	Road	Road	WILTON RD	Public Road In Use	63838.8
104555336	19/12/2007	Road	Road	FINNS RD	Public Road In Use	22603.0
104701993	13/03/2008	Road	Road	MACQUARIEDALE RD	Public Road In Use	98739.6
100047684	21/08/2008	Road	Road	REMEMBRANCE DRWY	Public Road In Use	186643.1
100047790	2/07/2008	Road	Road	HUME HWY	Public Road In Use	543751.4
101199683	10/11/2006	Intersection	Road		Public Road In Use	1552.2
101200310	10/11/2006	Road	Road	DOUGLAS PARK DR	Public Road In Use	25357.1
101285779	10/11/2006	Road	Road	BULLI APPIN RD	Public Road In Use	9162.7
101290084	29/06/2007	Intersection	Road		Public Road In Use	964.2
103497947	17/07/2007	Road	Pathway		Private Road	12648.1
104723469	8/11/2007	Intersection	Road		Public Road In Use	8106.0
104743937	27/07/2007	Road	Road	PRINCES HWY	Public Road In Use	102949.3
100051875	27/07/2007	Road	Road	MT OUSLEY RD	Public Road In Use	24527.9
100046492	10/11/2006	Road	Road	MACARTHUR DR	Public Road In Use	33471.3
101200750	10/11/2006	Intersection	Road		Public Road In Use	2193.8
104381102	5/01/1999	Road	Road	MINERVA RD	Public Road In Use	26483.8
104541994	6/09/2006	Road	Road	REMEMBRANCE DRWY	Public Road In Use	118371.0
104609548	19/02/2007	Road	Road	APPIN RD	Public Road In Use	68522.3
104691215	10/11/2006	Road	Road	CHURCH ST	Public Road In Use	4084.9
100047804	10/11/2006	Road	Road		Public Road In Use	8650.2
101200072	10/11/2006	Intersection	Road		Public Road In Use	1148.7
101200344	21/11/2008	Road	Road	CONDELL PARK RD	Public Road In Use	26827.1
101200048	10/11/2006	Road	Road	MORETON PARK RD	Public Road In Use	38438.4
101285787	22/11/2008	Road	Road	BULLI-APPIN RD	Public Road In Use	2329.8
104228832	10/11/2006	Road	Road	WOODBIDGE RD	Public Road In Use	63756.9
104304138	15/12/2006	Road	Road	REMEMBRANCE DRWY	Public Road In Use	154867.2
104461777	6/09/2006	Intersection	Road		Public Road In Use	668.7
104516261	10/11/2006	Intersection	Road		Public Road In Use	631.2
104542002	21/10/2002	Road	Road	DONALDS RANGE RD	Public Road In Use	19263.6
100051806	18/01/1994	Road	Pathway		Private Road	46987.8
100051904	27/07/2007	Intersection	Road		Public Road In Use	3780.7
100047735	10/11/2006	Road	Road	HUME HWY	Public Road In Use	129352.6
101201110	28/07/2008	Road	Road	PICTON RD	Public Road In Use	38763.2
101200270	6/09/2006	Road	Road	WILTON PARK RD	Public Road In Use	59682.6
101285254	4/09/2008	Intersection	Road		Public Road In Use	3036.6
101285778	4/06/2003	Intersection	Road		Public Road In Use	2129.3
104625024	9/07/2007	Road	Road	BULLI APPIN RD	Public Road In Use	86742.3
101200984	10/11/2006	Intersection	Road		Public Road In Use	19648.7
101284110	4/06/2008	Road	Road	VICTORIA RD	Public Road In Use	52580.5
101284185	10/11/2006	Road	Road	BRIAN RD	Public Road In Use	39507.7
101285255	16/12/1993	Road	Road	APPIN RD	Public Road In Use	3360.3
101285854	10/11/2006	Road	Road	MACQUARIEDALE RD	Public Road In Use	14128.8
101288906	14/12/1993	Road	Pathway		Private Road	16596.0

CADID	Date Modified	Road Type	Road Corridor	Road Name	Classsubty	Area (sq m)
104331780	6/09/2006	Road	Road	INVERARY CL	Public Road In Use	5968.0
104547051	6/09/2006	Road	Road	MALDON BRIDGE RD	Public Road In Use	34507.4
104679626	27/07/2007	Road	Road		Public Road In Use	75010.3
104691214	10/11/2006	Intersection	Road		Public Road In Use	1530.8
108357912	17/04/1997	Road	Road		Public Road In Use	687.4
108357359	17/04/1997	Road	Pathway		Private Road	8288.6
108359618	17/07/2007	Road	Road	DARKES FOREST RD	Public Road In Use	11599.5
116859684	10/11/2006	Undefined	Undefined		Public Road In Use	10053.8
116859722	10/11/2006	Undefined	Undefined		Public Road In Use	12365.8
116860134	10/11/2006	Undefined	Undefined		Public Road In Use	5292.4
116860580	10/11/2006	Undefined	Undefined		Public Road In Use	2346.3
108752912	10/11/2006	Road	Undefined		Public Road In Use	407.4
108851653	10/11/2006	Road	Undefined		Public Road In Use	5292.4
108851654	10/11/2006	Road	Undefined		Public Road In Use	2346.3
108851655	10/11/2006	Road	Undefined		Public Road In Use	2346.3
108754126	10/11/2006	Road	Undefined		Public Road In Use	841.1
108851659	10/11/2006	Road	Undefined		Public Road In Use	12365.8
108755321	10/11/2006	Road	Undefined		Public Road In Use	407.3
108755333	19/02/2007	Road	Undefined		Public Road In Use	460.5
108752925	10/11/2006	Road	Undefined		Public Road In Use	48.8
108851658	10/11/2006	Road	Undefined		Public Road In Use	12365.8
108752913	6/09/2006	Road	Undefined		Public Road In Use	1314.8
108851657	10/11/2006	Road	Undefined		Public Road In Use	255.7
108755324	10/11/2006	Road	Undefined		Public Road In Use	1397.1
108755342	10/11/2006	Road	Undefined		Public Road In Use	63.5
108755336	10/11/2006	Road	Undefined		Public Road In Use	1233.1
108755341	10/11/2006	Road	Undefined		Public Road In Use	96.8
108851656	10/11/2006	Road	Undefined		Public Road In Use	255.7
108755322	10/11/2006	Road	Undefined		Public Road In Use	637.8
108752911	10/11/2006	Road	Undefined		Public Road In Use	1251.0
108755323	10/11/2006	Road	Undefined		Public Road In Use	659.4
108758058	10/11/2006	Road	Undefined		Public Road In Use	235.7
108851652	10/11/2006	Road	Undefined		Public Road In Use	5292.4
108758059	19/02/2007	Road	Undefined		Public Road In Use	214.9
150279184	10/11/2006	Road	Road	KING ST	Public Road In Use	768.0
150279188	10/11/2006	Road	Road	BURKE ST	Public Road In Use	3880.7
153924954	10/11/2006	Road	Road		Public Road In Use	15819.6
160153632	2/07/2008	Intersection	Road		Public Road In Use	659.9
160153634	19/03/2008	Intersection	Road		Public Road In Use	1510.4
160153642	19/03/2008	Road	Road	PEMBROKE PDE	Public Road In Use	15148.7
160153646	19/03/2008	Road	Road	PEMBROKE PDE	Public Road In Use	1354.3
160153648	19/03/2008	Road	Road	PEMBROKE PDE	Public Road In Use	228.8
160153691	19/03/2008	Intersection	Road		Public Road In Use	393.2
160153692	19/03/2008	Road	Road	WHITE ST	Public Road In Use	1246.6
160153696	19/03/2008	Road	Road	CHISOLM ST	Public Road In Use	1491.4
160153702	2/07/2008	Road	Road	CHISOLM ST	Public Road In Use	217.3
160153789	19/03/2008	Road	Road		Public Road In Use	871.5
160153793	19/03/2008	Road	Road		Public Road In Use	408.6
161092288	17/09/2008	Intersection	Road		Public Road In Use	1360.9
161092289	17/09/2008	Road	Road	STOCKADE RD	Public Road In Use	18063.3
161092292	17/09/2008	Road	Road	DONALDS RANGE RD	Public Road In Use	55774.3
160949390	28/07/2008	Intersection	Road		Public Road In Use	8443.8

CADID	Name	Area (sq m)
120160600	MAIN SOUTHERN RAILWAY	460.5
120161374	MAIN SOUTHERN RAILWAY	1397.1
120160505	MAIN SOUTHERN RAILWAY	140.7
120160709	MAIN SOUTHERN RAILWAY	255.7
120157639	MAIN SOUTHERN RAILWAY	14428.9
120161189	MAIN SOUTHERN RAILWAY	1414.0
120160199	MAIN SOUTHERN RAILWAY	4261.4
120157760	MAIN SOUTHERN RAILWAY	61446.5
120158487	MAIN SOUTHERN RAILWAY	79610.2
120161183	MAIN SOUTHERN RAILWAY	4120.7
120157386	MAIN SOUTHERN RAILWAY	1240.0
120158815	MAIN SOUTHERN RAILWAY	166990.3
120157890	MAIN SOUTHERN RAILWAY	244346.0
161006564	MAIN SOUTHERN RAILWAY	242543.7

CADID	Date Modified	Classsubty	Area
120106870	6/09/2006	Primary	164.2
120106896	10/11/2006	Primary	60712.4
120106909		Primary	377.2
120106917	10/11/2006	Primary	29.5
120106922	10/11/2006	Primary	30935.3
120106930		Primary	209.9
120106943	10/11/2006	Primary	41205.6
120106956		Primary	2145.1
120106961	10/11/2006	Primary	8889.3
120106976	6/09/2006	Primary	29749.2
120107005		Primary	156.5
120107012	10/11/2006	Primary	1918.9
120107019	10/11/2006	Primary	699.1
120107032	10/11/2006	Primary	893.6
120107062		Primary	3082.1
120107572	6/09/2006	Primary	25012.1
120107582	10/11/2006	Primary	77231.5
120107603	27/07/2007	Primary	123435.0
120107613	10/11/2006	Primary	475.7
120107614		Primary	16730.8
120107619	10/11/2006	Primary	14523.3
120107620	10/11/2006	Primary	76402.5
120107661	27/07/2007	Primary	114384.0
120107688	27/07/2007	Primary	123910.4
120107712	10/11/2006	Primary	548539.9
120107730	27/07/2007	Primary	1051169.5
120108302		Primary	2074.9
120108304	27/11/2008	Primary	16287718.0
120108647	10/11/2006	Primary	5938.7
120108673		Primary	714.6
120108696	10/11/2006	Primary	3197.5
120108970	10/11/2006	Primary	57636.9
120109014	10/11/2006	Primary	36521.7
120109018	10/11/2006	Primary	23099.2
120109041	10/11/2006	Primary	4191.8
120109479	6/09/2006	Primary	4301.2
120109564	10/11/2006	Primary	12303.2
120109570	6/09/2006	Primary	7355.2
120109732	10/11/2006	Primary	115.1
120110387	19/02/2007	Primary	168753.9
120110428	10/11/2006	Primary	35666.0
120110752		Primary	350.7
120110804		Primary	1509.7
120110809	10/11/2006	Primary	571.7
120110830	10/11/2006	Primary	8469.1
120110859	10/11/2006	Primary	909.1
120110892	10/11/2006	Primary	6139.3
120110899	6/09/2006	Primary	1023.8
120110906		Primary	10753.6
120110924		Primary	7409.8
120110930		Primary	66.4
120110936	6/09/2006	Primary	8031.3
120111459	6/09/2006	Primary	36853.2

CADID	Date Modified	Classsubty	Area
120111480	10/11/2006	Primary	1486.9
120111495	10/11/2006	Primary	4485.4
120111500	10/11/2006	Primary	2353.0
120111501	10/11/2006	Primary	2490.6
120111506	10/11/2006	Primary	95420.9
120111548	27/07/2007	Primary	105767.8
120111554	6/09/2006	Primary	36664.5
120111617	29/08/2008	Primary	1139921.7
120111667	19/02/2007	Primary	1236921.5
120111712	10/11/2006	Primary	5205.5
120111821		Primary	3946.9
120112191	27/07/2007	Primary	682177.6
120112356	27/07/2007	Primary	785.9
120112464	10/11/2006	Primary	11238.0
120112664	27/07/2007	Primary	1770.7
120113236	10/11/2006	Primary	2264.7
120114195	10/11/2006	Primary	4068.1
120114298	10/11/2006	Primary	180237.1
120114547	10/11/2006	Primary	233.7
120114581	10/11/2006	Primary	5870.1
120114644	10/11/2006	Primary	5138.2
120114678	10/11/2006	Primary	19074.6
120114761	10/11/2006	Primary	38309.5
120114773	10/11/2006	Primary	15709.2
120114781	29/06/2007	Primary	2267.8
120114786	19/02/2007	Primary	2824.8
120114818		Primary	54.2
120114824	6/09/2006	Primary	4139.3
120114832		Primary	289.5
120115357	10/11/2006	Primary	5663.1
120115360	10/11/2006	Primary	5775.2
120115361	10/11/2006	Primary	8268.3
120115377	27/07/2007	Primary	43067.4
120115388	10/11/2006	Primary	12081.6
120115393	10/11/2006	Primary	103242.0
120115394	10/11/2006	Primary	32441.1
120115426	29/06/2007	Primary	9077.7
120115432	27/07/2007	Primary	129799.0
120115436	27/07/2007	Primary	132584.8
120115556		Primary	264.1
120115574	19/02/2007	Primary	51905.0
120115617	10/11/2006	Primary	20306.4
120115623	10/11/2006	Primary	30994.3
120115985	10/11/2006	Primary	28316.8
120116087	21/08/2007	Primary	200051.2
120116690		Primary	2920.3
120116942	10/11/2006	Primary	25342.8
120116974	10/11/2006	Primary	17123.0
120116989	6/09/2006	Primary	7837.7
120117216	6/09/2006	Primary	17725.8
120117236	10/11/2006	Primary	3018.4
120117543	10/11/2006	Primary	1536.5
120118206	10/11/2006	Primary	3724.7

CADID	Date Modified	Classsubty	Area
120118263	10/11/2006	Primary	19300.5
120118531	6/09/2006	Primary	12682.4
120118540		Primary	229.7
120118541	10/11/2006	Primary	83378.4
120118545	10/11/2006	Primary	11183.5
120118591		Primary	11.7
120118596	10/11/2006	Primary	84224.3
120118604		Primary	1303.2
120118610	10/11/2006	Primary	121982.8
120118617		Primary	173.8
120118631		Primary	259.5
120118673	6/09/2006	Primary	18000.5
120118685	10/11/2006	Primary	12242.7
120118698	10/11/2006	Primary	211.8
120118706	10/11/2006	Primary	44647.4
120118720	10/11/2006	Primary	3150.7
120119170	10/11/2006	Primary	4034.5
120119230	10/11/2006	Primary	6982.5
120119247		Primary	15774.4
120119263	27/07/2007	Primary	14568.9
120119269		Primary	11609.1
120119273	10/11/2006	Primary	8016.4
120119274	10/11/2006	Primary	17036.7
120119279	10/11/2006	Primary	37339.5
120119280	10/11/2006	Primary	86257.7
120119327	6/09/2006	Primary	40986.1
120119348	27/07/2007	Primary	28963.1
120119488	9/01/2007	Primary	475431.5
120119685	10/11/2006	Primary	2252.4
120119810	10/11/2006	Primary	1127.0
120119964	21/08/2007	Primary	1219846.8
120120356	10/11/2006	Primary	5274.2
120122047	27/07/2007	Primary	470583.0
120122093	10/11/2006	Primary	652.9
120122149	19/02/2007	Primary	123512.6
120122367	10/11/2006	Primary	248.7
120122389	10/11/2006	Primary	223.0
150549166		Primary	540.3
153371067	10/11/2006	Primary	6306.7
156026636	12/01/2007	Primary	8183.8
156704352	16/03/2007	Primary	1560.0

LEGEND

Lot Description Table

CADID	NSW Land and Property Management Authority GIS reference number.
Controlling Entity	Controlling entity of lot: 1 = Unknown. 2 = Freehold Land. 3 = Department of Lands (Crown). 4 = Local Government Authority. 9 = National Parks and Wildlife Service. 11 = State Rail Authority of NSW.
Lot No.	Number assigned to the parcel of land created on a plan of subdivision or title.
Plan Label	Reference of deposited plan.
Lot Class	Defines lot class as Standard Lot, Standard Part Lot, Strata or Stratum.
Area (sq m)	Area of the lot in square metres.

Crown Land Description Table

CADID	NSW Land and Property Management Authority GIS reference number.
Date Modified	Last date that feature was modified.
Crown Lands	Crown lands subtype: 0 = Unidentified. 1 = Crown Land. 5 = Other.
Class of Crown Land	Defines class of land as Crown Road, Crown Waterway or Crown Parcel.
Area (sq m)	Area of the land in square metres.

Road Reserve Description Table

CADID	NSW Land and Property Management Authority GIS reference number.
Date Modified	Last date that feature was modified.
Road Type	Defines type of road reserve as Road, Intersection or Undefined.
Road Corridor	Defines the type of road corridor as Road, Pathway or Undefined.
Road Name	Lists the official road name.
Classsubty	Defines class subtype as Public Road in Use or Private Road.
Area (sq m)	Area of the reserve in square metres.

Rail Reserve Description Table

CADID	NSW Land and Property Management Authority GIS reference number.
Name	Lists the name of the rail line.
Area (sq m)	Area of the reserve in square metres.

Easement Description Table

CADID	NSW Land and Property Management Authority GIS reference number.
Date Modified	Last date that feature was modified.
Classsubty	Defines class subtype as Primary or Secondary.
Area	Area of the easement in square metres.