

Community News

South32 Illawarra Metallurgical Coal



JUNE 2024

MENANGLE COMMUNITY HALL MAKEOVER BEGINS

BEFORE: November 2022



The Menangle Community Hall makeover is starting to take shape, with footings, foundations, and framing assembled.

The Community Partnership Program and IMC donated \$100,000 each to help with the refurbishment, which was also funded by the Australian Government's Black Summer Bushfire Recovery Grants program.

When completed, the hall is expected to be available to the entire community for meetings, community events, dance, arts, and fitness classes. It may also be used as a place of refuge during natural disasters such as bushfires.





APPIN MINE MEMORIAL SERVICE: A SOMBRE REMINDER

The annual Appin Mine Disaster Memorial Service will be held at Appin Sportsground on Wednesday, July 24, the 45th anniversary of the tragedy that claimed the lives of 14 men.

The service, which will be attended by family members of the victims, Appin Mineworkers, and the local community, is a sombre reminder of the blast at the mine on the night of July 24, 1979.

In a mark of respect toward the miners who lost their lives, a commemorative sculpture, funded by IMC and unveiled in 2020, was created in consultation with the victims' families to provide a space for contemplation and remembrance.



All the latest details and dates will be updated and published on our Community Portal, which you can access by scanning the QR code.

EXPLORATION UPDATE

We hold several exploration licences in the local area. To improve our geological understanding of the region, we use various exploration techniques, including borehole drilling, seismic surveys, and aeromagnetic surveys.

One drill rig is currently operating in the Menangle area. Our Community Team is engaging with local landholders about potential exploration drilling sites. These sites are temporary and fully rehabilitated after operations.

We are also undertaking seismic surveying, both 3D and 2D phases, over some of the areas within our exploration licences. The 3D seismic survey was completed in the Menangle and Cawdor areas in September 2023 and April 2024.

It took place on private properties only, with land access agreements negotiated and in place with those landholders. The 2D seismic survey (phase 1) was also successfully completed in May 2024, carried out on both private properties and public roads in the Bickley Vale, Camden, Cawdor, Mount Hunter, Razorback, Menangle areas, and Northern parts of Picton.

The 2D seismic survey (Phase 2) is proposed to commence in late 2024; dates and details are to be confirmed. Where the survey is planned to take place on private property, land access agreements will be negotiated and put in place with landholders. Notification letters will be sent to those landholders along public roads being surveyed prior to the survey being carried out.

APPIN MINE COMMUNITY CONSULTATIVE COMMITTEE UPDATE

Our Community Consultation Committee meets bimonthly; the minutes are publicly available on our website. The following items were discussed at our last meeting held in April 2024:

- Sale of Illawarra Metallurgical Coal
- Environment updates, including Georges River rehabilitation, aquatic health monitoring, and changes to emissions monitoring.
- Update on the Appin Mine Ventilation and Access Project, including progress on controlled blasting activities.
- Update on the current seismic exploration program.
- Information on the Third Party Coal Processing Project and Ventilation Air Methane Project.
- Community investments generated from IMC and the Community Partnership Program, including support for the Illawarra Local Aboriginal Land Council, Appin Mens Shed, Douglas Park Wilton Football Club, Picton Swim School, and River Road bus.
- Farewell to the long-standing Chairperson.

MAKE YOUR MARK IN MINING

South32 offers a unique opportunity for apprentices to learn their trade below the surface and create a career pathway in the mining and metals industry.

As an apprentice with South32 Illawarra Metallurgical Coal, you'll complete a Certificate III trade qualification over 4 years, with opportunities available at their Appin and Dendrobium underground mine sites in the following trades:

- Electrical
- Engineering Mechanical
- Engineering Fabrication

Your work with South32 will take you underground, where you will gain the skills and experience you need to complete your trade qualification.



What's in it for you?

- Gain real industry skills and experience
- Complete a Certificate III trade qualification
- Work alongside skilled tradespeople to develop your skills
- Potential for an ongoing role with South32 upon completion
- Receive ongoing mentoring and support from a Zeal Futures Workforce Solutions Specialist
- Paid work while you study

How to apply?

Our 2025 Apprenticeship Program will open for applications in July 2024. For more information and to apply, visit zealfutures.com.au

NURTURING CREATIVITY AMONG WOLLONDILLY YOUTH

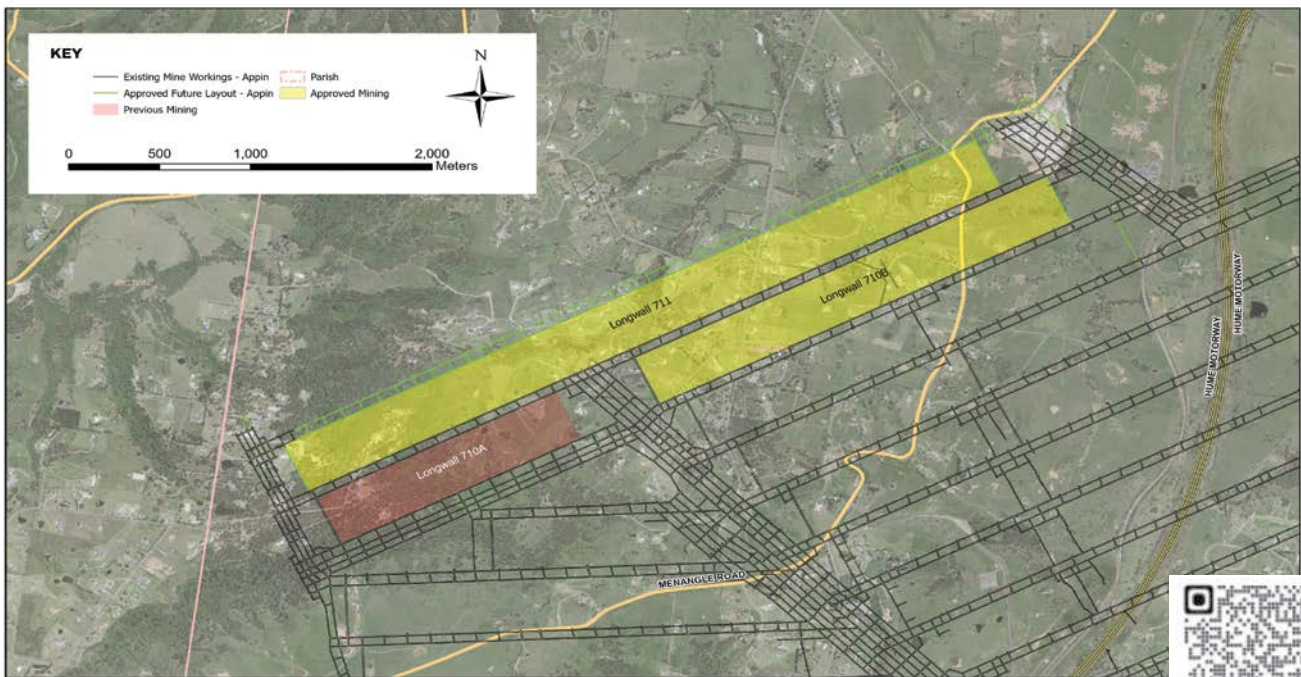
The IMC Community Partnership Program recently endorsed and approved the funding for the River Road Creative Academy – Mobile Expression program.

The donation will support a Mobile Expression Sessions program that empowers and inspires youth, fosters creative self-expression, and enhances overall wellbeing.

'Creative Dilly' is a donated community bus converted into a mobile creative studio that will set up and deliver music and creative arts programs to the following schools: Cawdor, Appin, Douglas Park, Wilton Public Schools, and the Menangle School of Arts.

This includes providing a recording studio, podcasting and youth radio facilities, painting and urban art resources, and digital art and software resources.





APPIN MINE OPERATIONAL UPDATE

Appin Mine has completed mining on Longwall (LW) 710A and is expected to start extracting LW710B in early June 2024. Visit our Community Portal to search your property address and view its location in relation to our Appin Mine operations: <https://community.south32.net>

If your property falls within the LW710B subsidence boundary and you have not yet been contacted, please call our free Community Call Line at 1800 102 210 or email illawarracommunity@south32.net. Your property will require pre-mining inspections prior to mining.

Please note that changes to your property allegedly caused by mining in the area need to be reported to Subsidence Advisory NSW on 02 4677 6500 or via their website: www.subsidenceadvisory.nsw.gov.au

Subsidence Advisory will then provide advice on the claim's lodgement process. Under the Coal Mine Subsidence Compensation Act 2017, you have 12 months from when you first notice any damage to lodge your claim to be eligible for compensation.



Menangle Advisory Panel visit AMVA site to inspect noise monitors.

AMVA PROJECT

- Pre-commissioning of the winders on ventilation shaft 8 (VS8) has commenced, with main sink activities due to begin in mid-2024. This will include routine controlled blasting to the final depth, lining the shaft with concrete, and installing services like power, ventilation, compressed air, and water.
- Pre-sink activities on ventilation shaft 7 (VS7) commenced in April 2024, including drilling and blasting, mucking out material, and installing temporary and permanent ground support. The headframe and winder assembly has also commenced, with the main sink due to begin later in the year.
- Tree screening has also commenced, with more than 1,000 plants planted.

FIND US ON FACEBOOK

Follow the South32 Illawarra Metallurgical Coal Facebook Page to stay up to date with what we're doing at our operation and in the community. To find our page, scan the QR code or go to facebook.com/South32IllawarraMetallurgicalCoal



LEARN MORE ABOUT MINING

To learn more about our mining activities, head to our Community Portal at www.community.south32.net



COMMUNITY CALL LINE

Residents who have questions, concerns or complaints about Illawarra Metallurgical Coal's activities are encouraged to contact us through our Community Call Line on **1800 102 210**. You can also email at illawarracommunity@south32.net