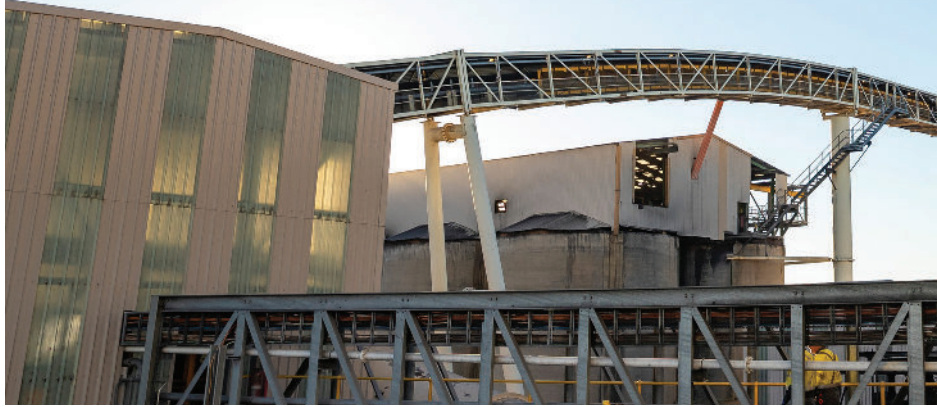




Appin Mine Community News

September 2025



Sponsorship Spotlight: Celebrating NAIDOC Week 2025



We were proud to sponsor the Tharawal Local Aboriginal Land Council Fun Day as part of NAIDOC Week celebrations, held on 11 July 2025. This vibrant community event brought people together to celebrate the history, culture, and achievements of Aboriginal and

Torres Strait Islander peoples. The day featured cultural performances, interactive activities, music, food, and fun for all ages - a fantastic way to honour the spirit of NAIDOC Week and strengthen community connections.

Our sponsorship reflects our ongoing commitment to supporting reconciliation, cultural celebration, and local initiatives that bring our communities closer together.

**ARTS
ALIVE**

**SAT 11 OCT
12PM-9PM**

Wollondilly Shire Council NSW GOVERNMENT GM³ Appin Mine

GM³ is proud to continue its partnership with Wollondilly Shire Council as a Premier Partner of the inaugural 'Arts Alive' event on Saturday, 11 October 2025 (12pm - 9pm). Replacing the Illuminate Festival, this celebration of community and culture will transform Menangle Street in Picton into a vibrant hub of light, music, and art.

GM³ will once again host its popular GM³ Zone, a dedicated area featuring an interactive display and photobooth. The event offers a variety of family-friendly activities, food stalls and performances. We look forward to seeing you there!

GM³

**MATCHING
CONVOY
DONATIONS -
UP TO \$50K**

GM³ are proud to once again support the 2025 i98FM Illawarra Convoy, taking place on Sunday 16 November.

Convoy has a special connection to our operations, with West Cliff Coal Preparation Plant proudly serving as the official starting line each year, where more than 1,500 trucks and motorcycles gather at Pit Top before making their way down the mountain.

This year, GM³ will be matching every dollar donated through our Fundraising Page - **up to \$50,000!** That means every donation goes twice as far in supporting local families doing it tough.

If you would like to make a donation, head to our fundraising page on the Convoy website.

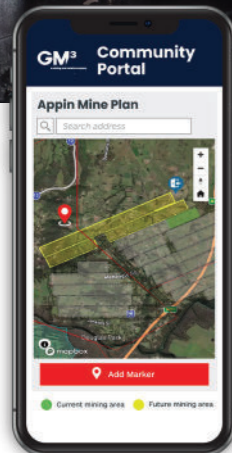
Appin Mine Operations Update

Appin Mine completed extraction of Longwall (LW) 710B in June 2025 and commenced extraction of LW 711 in July 2025. This longwall is located in the Razorback and Menangle area and is expected to be completed within the next 16 months, subject to progress.

Planning for Future Longwalls (712–716)

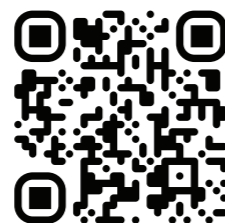
To continue mining beyond LW 711, we are required to have an Extraction Plan approved by the NSW Department of Planning, Housing and Infrastructure. We are continuing to prepare an Extraction Plan for proposed LWs 712 to 716 in Appin Area 7.

As part of this process, we've started a range of studies, including heritage surveys, ecology assessments and environmental fieldwork. These studies will help support the environmental approvals required for future mining activity.



View our Interactive mine plan

For an interactive map of our current mine plan, latest project updates and more, visit our Community Portal at community.gm3.au



PROJECT UPDATES

Appin Mine Ventilation and Access Project

Main sinking activities are progressing at both Ventilation Shafts 7 and 8.

Blast notifications are no longer required, as monitoring confirms that main sink blasting is consistent and impacts remain negligible.

Ventilation Air Methane Abatement Project

Public exhibition for the project approval has been completed.

Feedback from community members and agencies is being collated, with responses to submissions to be issued before the Department finalises its assessment.

The Modification Report, justification, and associated assessments are available on the NSW Major Projects website.

Further information regarding these Projects is available on our Community Portal.

Appin Mine Community Consultative Committee (CCC). Working Together for a Stronger Community

The Appin Mine CCC meets bimonthly to share updates and discuss key topics about local mining operations. Meeting minutes are publicly available on our website to ensure open and transparent communication.

Key topics of discussion from our June and August 2025 meetings:

- Completion of Longwall 710B and commencement of Longwall 711.
- Extraction Plan for proposed Longwalls 712–716 in Appin Area 7, timeline and current environmental studies underway.
- Report on safety incidents (with national comparisons), Subsidence claim updates.
- Rehabilitation work at Georges River and North Cliff.
- Seismic monitoring.
- Exploration program updates.
- Appin Mine Ventilation and Access Project progress.
- Ventilation Air Methane (VAM) Project and Public Exhibition.
- Updates on investments from GM³ and the Community Partnership Program.

Meeting minutes can be found online at www.gm3.au/appin-mine

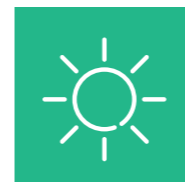
Latest Community Grants

The Appin Mine Community Partnership Program (CPP) is proud to continue supporting local initiatives that make a real difference in our community. We are thrilled to announce the endorsement of four new applications:



Food Van Generator for Salvation Army

The CPP has endorsed The Salvation Army's application to fund a generator for their food van, which plays a vital role at community events. This new generator will ensure the food van operates smoothly and reliably as they serve those in need.



Sail Shades for Wilton Public School

We are pleased to support Wilton Public School with a grant for sail shades for their new building area. These shades will provide protection from the hot Aussie sun, creating a safer and more comfortable environment for students and staff.



War Memorial Grant – Honouring Our History!

The CPP is proud to endorse the application from the Appin War Memorial committee, providing vital support for this important community project. The grant will help fund design, planning, construction, landscaping, permits, and signage for

the memorial. In addition to this support, the war memorial project has also received generous funding from other entities and the local community, highlighting the strong collective commitment to honouring those who served. This collaborative effort ensures the creation of a meaningful and lasting tribute that preserves our shared heritage.



Outdoor Seating for Douglas Park Public School

Great news for Douglas Park Public Primary School! The CPP has endorsed a grant to the Douglas Park Parents and Citizens Association to purchase three new Felton Park settings for the school playground. These additions will enhance the

outdoor play environment, providing children with safe, fun, and engaging spaces to learn and grow.

APPLY FOR A GRANT

We are proud to invest in local communities and contribute to the social, economic, and cultural development of our region.

If you have a community project in mind, please get in touch by emailing community@gm3.au or scan the QR code to apply online.



WE WANT YOUR FEEDBACK!

We are seeking community feedback on the type of information you would like to hear from Appin Mine, and your preferred methods of communication.

Take our 2-minute survey and help us deliver the most relevant and meaningful updates on the topics that matter most to you.



A message from Andy Hyslop – General Manager Appin Mine



This August, Appin Mine marked an important milestone – one year under our new owners, GM³.

Over the past 12 months, we've worked together through challenges and embraced new opportunities, while continuing to support local jobs and businesses, the community, and the Australian steel industry.

So far this year, we have continued to invest in our communities, through partnerships such as the must-anticipated *Arts Alive Festival* in October, as well as the range of grants through our Community Partnership Program.

As we begin our second year with GM³, our focus at Appin Mine remains clear; putting safety first and continually improving our operations.

REMEMBERING THE VICTIMS OF THE 1979 APPIN MINE DISASTER

On Thursday, 24 July 2025, Appin Mine held its annual Memorial Service to honour the 14 men who lost their lives in the 1979 Appin Mine Disaster.

Family and friends of the victims, community members, Mines Rescue representatives, dignitaries and the Appin Mine team gathered at the memorial site to pay their respects and reflect on the lasting legacy of the event, 46 years on.

The service included addresses by General Manager of Appin Mine and other dignitaries, as well as musical items by the Appin Primary School Choir and local musicians.

In a moving tribute, Appin Mine workers stood alongside the students to lay flowers at each of the 14 commemorative plaques – followed by a moment of silence to reflect on the lives lost and the importance of continued commitment to safety in everything we do.

Following the memorial, attendees came together for a morning tea – an opportunity to share stories, connect, and reflect on the significance of the day.

Thank you to everyone who helped organise this important event and came out to pay their respects.



APPIN MINE TAKES TO THE FIELD WITH CLONTARF FOUNDATION

On Friday 27 June, Appin Mine sponsored an Oz Tag Day with our community partner, the Clontarf Foundation – a not-for-profit organisation dedicated to supporting young Aboriginal and Torres Strait Islander men to complete high school and transition into the workforce.

Held at St Helens Park, near our Appin Mine operations, the event brought together Clontarf High School Academies from across the region for a Round Robin Oz Tag tournament.

A team Appin Mine team members, including three apprentices also attended the day, taking to the field alongside the students. This provided the students a valuable opportunity to connect with others who are just starting their careers in mining. It opened the door to conversations about what it's like to work in the industry, and the pathways available after school.



The day wrapped with a BBQ lunch put on by Clontarf. Events like these are an important reminder of the positive impact we can make by investing time and energy into the next generation.

COMMUNITY CALL LINE

Residents who have questions or concerns about our activities are encouraged to contact us through our Community Call Line on **1800 102 210**.

You can also email at community@gm3.au