

MARCH 2026

Appin Mine Trust Helps Bring New School Nature Playground to Life

Students at Douglas Park Public School have even more reason to smile this term, with the official opening of their brand-new Nature Playground – a vibrant outdoor space designed to inspire play, learning and imagination for years to come.

The playground was made possible through generous funding by the GM³ Appin Mine Community Partnership Program (CPP), the Veolia Mulwaree Trust, Wollondilly Shire Council and the Douglas Park Public School P&C Association. The new playground provides a safe, engaging and inclusive environment where students can stay active, build friendships and develop important social skills through play.

To mark the occasion, General Manager of Appin Mine, Andy Hyslop joined CPP Board members, the P&C, along with students, teachers and SRC members for a ribbon cutting ceremony on 6 March. Speaking at the event, Andy reaffirmed the mine's long-standing connection to the local community.

"Appin Mine has been part of the Wollondilly community for almost 70 years, and we have a long and valued partnership with Douglas Park and this school," he said. "Supporting local initiatives like this is an important part of that commitment."



Appin backs Wollondilly Basketball

GM³ Appin Mine is proud to announce the continuation of our Platinum sponsorship of the Wollondilly Basketball Razorbacks for the 2026 and 2027 seasons.

Funds will help reduce financial barriers for young players and their families by supporting registration fees, uniforms and competition travel costs for regional representative teams.

This sponsorship reflects our ongoing commitment to investing in the Wollondilly region and supporting programs that promote healthy lifestyles, teamwork, and positive outcomes for young people and families.

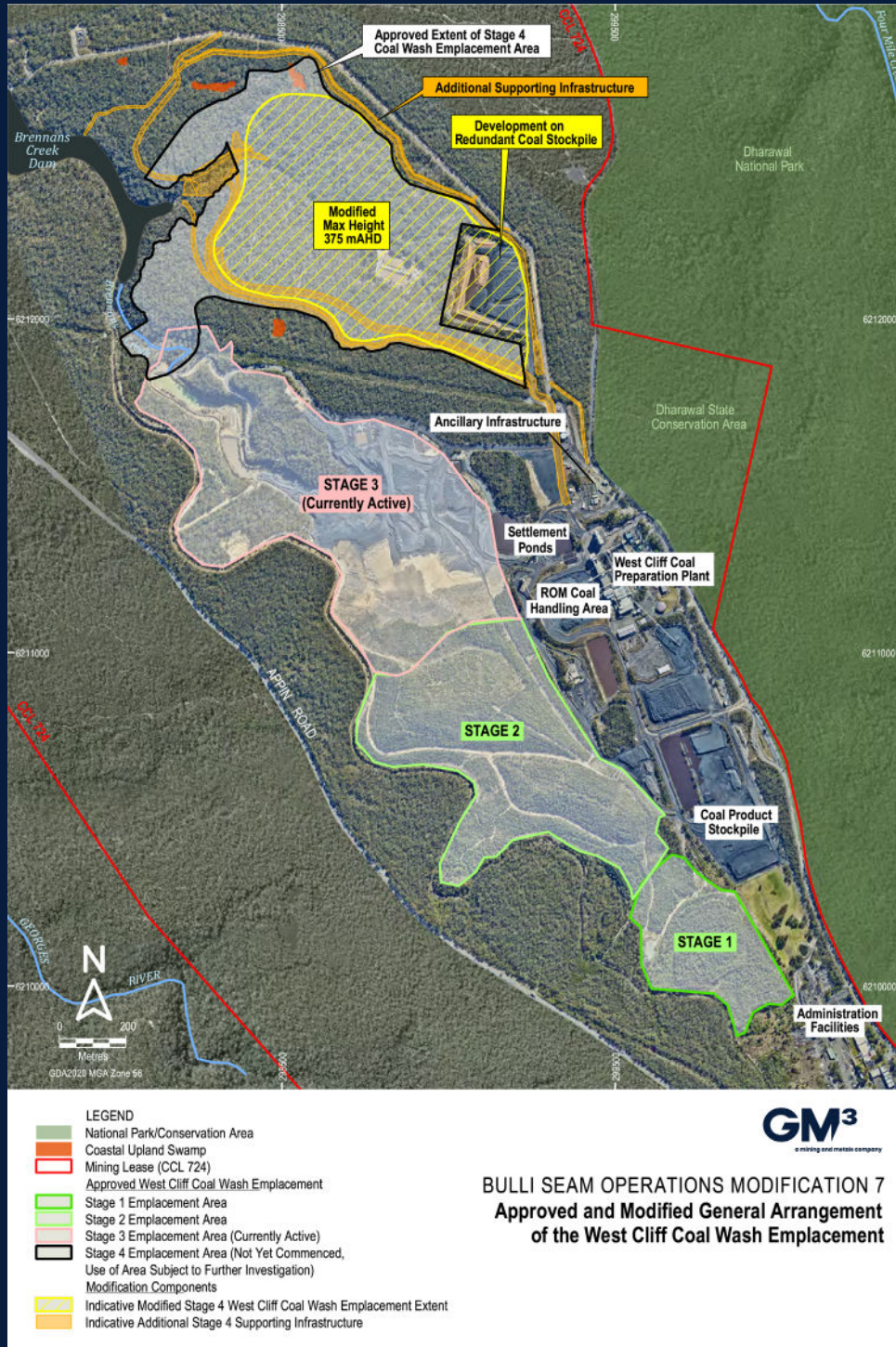
Appin Mine rolls up their sleeves for Clean Up Australia Day



The Appin Mine team were out in the community this February for Clean Up Australia Day. Led by our Environment and Community Team, volunteers spent the day collecting rubbish around Menangle township, Appin West Pit Top and Douglas Park Gorge. It's a pleasure to get out in the community and help clean up our local area and waterways.

Proposed Modification – West Cliff Coal Wash Emplacement Area (Stage 4)

GM³ is preparing a modification (MOD 7) to refine the approved design of Stage 4 of the West Cliff Coal Wash Emplacement Area (see map to left).



The proposed changes reduce the overall landform footprint within the previously approved area, including avoiding identified heritage and environmental features. To achieve this reduced surface area while maintaining the approved emplacement volume, the refined design adopts a maximum height of 357m AHD.

This height remains below the 365m AHD originally assessed in the Bulli Seam Operations Environmental Assessment and reflects a design refinement of the currently approved 331m AHD landform.

The updated design also improves slope geometry, enhances long-term stability and drainage performance, and strengthens rehabilitation outcomes.

A Scoping Report has been submitted to the NSW Department of Planning, Housing and Infrastructure and environmental studies are underway. A detailed Modification Report will be submitted in 2026 and made publicly available on the NSW Planning Portal.

For more information about the proposed modification, including how to provide feedback, visit the NSW Planning Portal via the QR code below:



Appin Mine Ventilation and Access Project Update

Main sinking shaft construction is progressing with Ventilation Shaft No.7 (VS7) approximately >30% of its total depth complete and Ventilation Shaft No.8 (VS8) >50% complete.

Visual bund construction is ongoing. The northern end will be finished early 2026 and prepared for landscaping/tree planting around Q2 2026. Additional mature trees were planted along the fenceline at the Finns Rd/Menangle Rd intersection.



Appin Leads Industry in Trial of New VAM Abatement Technology

In parallel with the VAM abatement trial at Ventilation Shaft No.6 in Douglas Park, GM³ Appin Mine continues to lead the industry in advancing solutions to reduce ventilation air methane (VAM), supporting another innovative VAM abatement technology trial.

The CATCH4 Project (Catalytic Oxidation of Methane), developed by Mining3 and funded by Low Emissions Technology Australia (LETA), aims to develop a commercial-scale catalytic technology designed to safely and effectively reduce ventilation air methane. In the current program phase (Phase 2), a pilot unit with a capacity of 1 m³/s will be trialled.

GM³ Appin Mine is providing access to our Ventilation Shaft No. 2 (VS2) site to host the trial. Unlike the VS6 project, which uses Regenerative Thermal Oxidiser (RTO) technology, CATCH4 uses a catalytic oxidation process that operates at lower temperatures and lower VAM methane content.

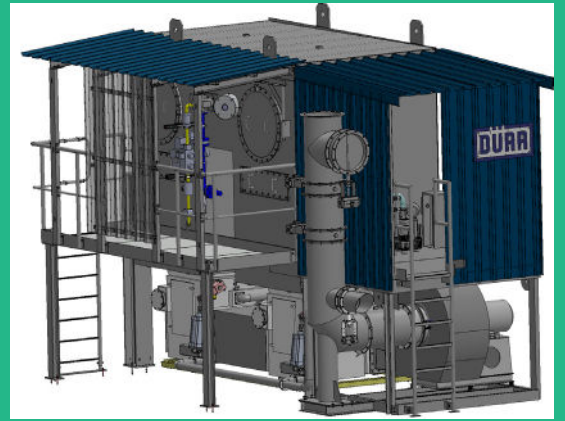
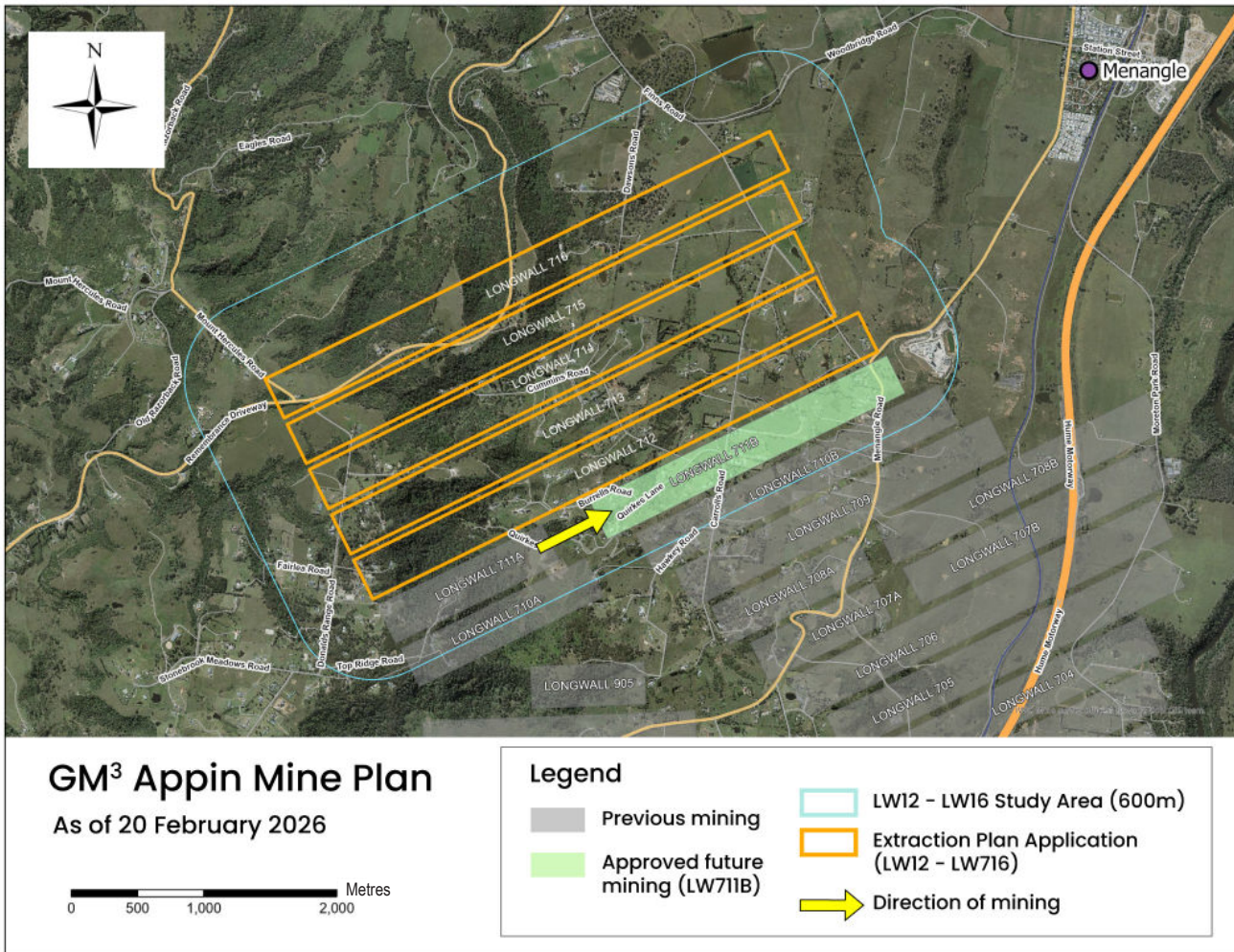


Image: 3D render of the pilot catalytic VAM abatement unit

By trialling multiple technologies in parallel, Appin is not only evaluating the most effective methane abatement options for its own operations, but also generating critical data that will support broader industry understanding and adoption of VAM abatement solutions. These trials reinforce Appin's position at the forefront of methane reduction efforts, contributing practical insights that others across the mining sector can leverage.

Approvals for the trial are currently being finalised.



Appin Mine Operational Update

Appin Mine completed Longwall (LW) 711A on 1 February 2026. We have commenced extraction of LW 711B, which will take approximately 12 months.

Planning for future longwalls (LW712 - 716): To continue mining beyond LW 711B, we are required to have an Extraction Plan approved by the NSW Department of Planning, Housing and Infrastructure (DPHI). Consultation with Government Authorities and the Appin Community Consultative Committee was submitted on 2 December 2025. Agency consultation (including responses) is in progress, and the Extraction Plan was submitted to the NSW DPHI on 16 February 2026.



Welcoming the next generation in mining

We are proud to welcome our newest cohort of Graduates and Cadets to GM³.

Having now been inducted to site, they will join our Appin and Dendrobium operations, where they'll be mentored by our expert teams and gain hands-on experience in their chosen disciplines, including Electrical, Mechanical and Environmental engineering, Surveying and Geology.

Under our Graduate Program, participants will spend the next 2–3 years developing their technical skills and experience aligned to their chosen career pathways, while also leading a business improvement project.

Our Cadetship provides current university students meaningful industry experience and skills development while completing their final years of study. We look forward to the energy and impact they will bring to our operations, and to supporting them as they take their first steps in their careers.

Appin CCC Meeting Minutes

The Appin Mine Community Consultative Committee (CCC) meets bi-monthly to share updates and discuss key topics about local mining operations. Key topics from our February 2026 Meeting:

- Longwall 711A, progress update, and indicative Mine Plan updates.
- Extraction Plan update for proposed Longwalls 712–716 in Appin Area 7.
- Subsidence claim updates.
- Rehabilitation progress at Georges River and North Cliff.
- Appin Mine Ventilation and Access Project progress.
- Ventilation Air Methane (VAM) Project and introduction to CATCH4 Project.
- Updates on sponsorships from GM³ and the Community Partnership Program.

Full meeting minutes can be found on our website: www.gm3.au/appin-mine

Latest Community Grants

The Community Partnership Program (CPP) Committee is proud to support the the following community projects:

Miracle Babies Foundation NurtureTie Program

The program will be delivered at Cambelltown hospital over a 12-month period, increasing specialised support to families of premature and sick newborns, helping strengthen wellbeing and connection during a critical time.

Appin Public School – Technology for Learning Initiative

The Technology for Learning Initiative will provide secure charging stations for laptops in classrooms. This initiative will strengthen digital learning opportunities and help ensure students have reliable access to technology as part of everyday learning.

Rotary Club of Picton Inc – UTTW Program (2026)

This program aims to build practical skills, confidence and road awareness among young drivers, contributing to safer driving behaviours and positive long-term outcomes for local youth. Following an initial sponsorship by GM³, support will continue through the Community Partnership Program.

Apply for a grant

If you're planning a project in 2026 near our Appin mine sites, we'd love to hear from you! We welcome applications that align with our key focus areas:

- community services
- environment
- education
- health



For eligibility criteria, and to apply, scan the QR code or visit: <https://community.gm3.au/>

CONTACT US

Residents who have questions or concerns about our activities are encouraged to contact us through our Community Team.

PH: 1800 102 210

E: community@gm3.au

W: www.community.gm3.au

Follow us on Facebook to hear what we're up to in the community:

www.facebook.com/gm3AppinDendrobium